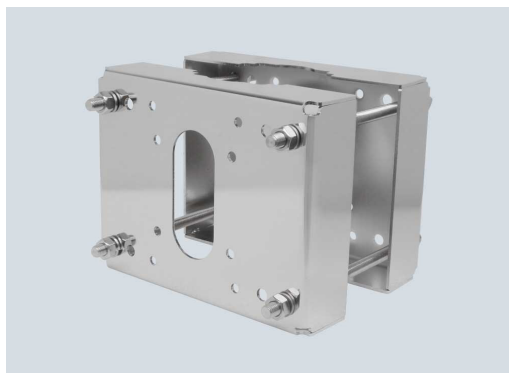


PMA-EC-932-SSPM-M Art. No. 341224



- Solid construction
- Easy installation and orientation
- For use in highly corrosive environments

MY R. STAHL

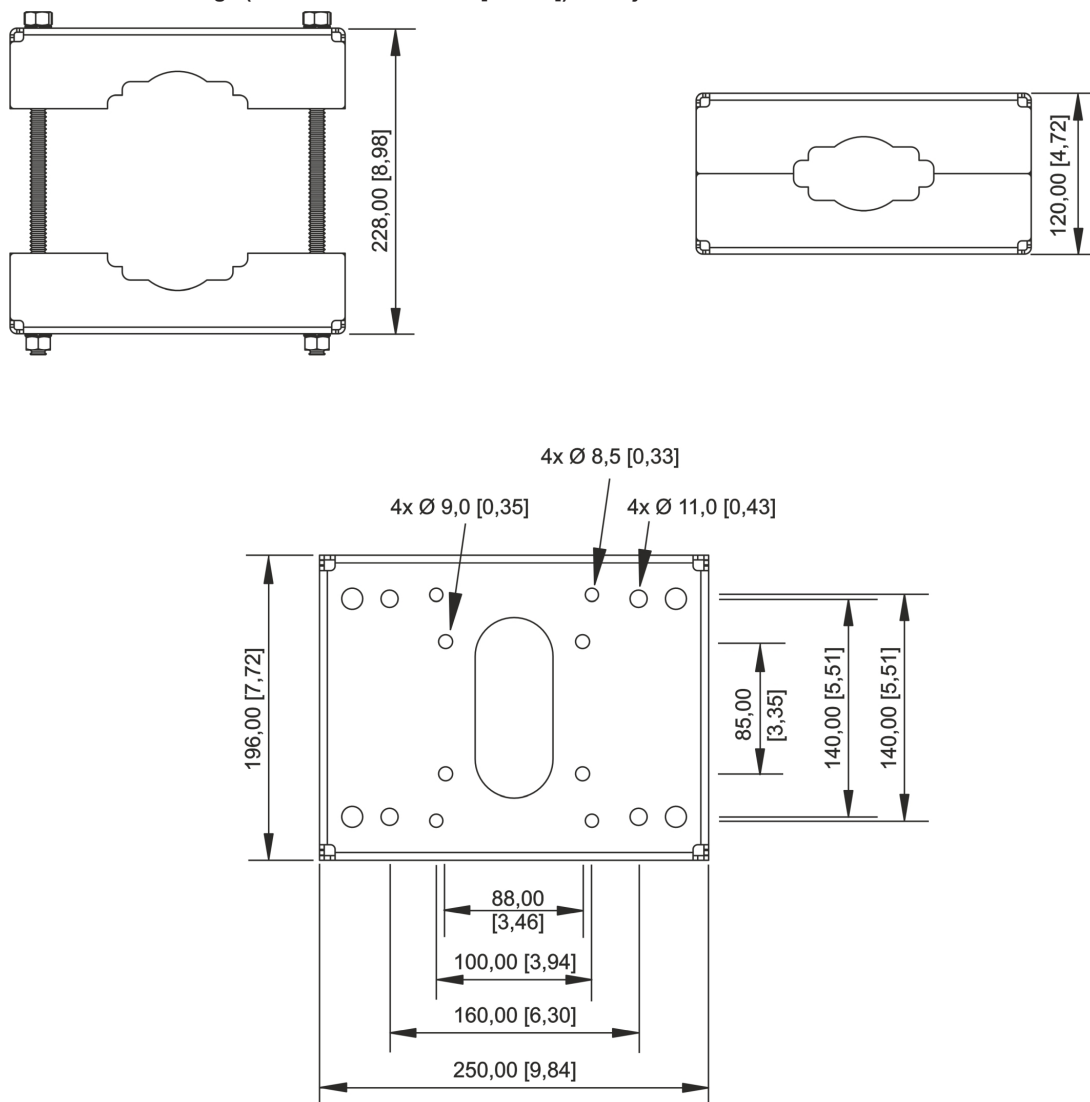
Stainless steel AISI316L pole mounting adapter (side mounting) for mounting EC-932 cameras, even in the harshest and most corrosive environments.

Technical Data

General	
Version	PMA-EC-932-SSPM-M
Description	Pole (side) mount adapter for camera EC-932 and wall bracket type SSBK-L and SSBK-M
Mechanical Data	
Type of installation	on poles with a diameter of 80 mm to 140 mm
Material	Stainless steel 316L (1.4404)
Dimensions (WxHxD)	250 mm x 196 mm x up to 228 mm
Weight	5 kg
Weight	11.02 lb

PMA-EC-932-SSPM-M Art. No. 341224

Dimensional Drawings (All Dimensions in mm [inches]) – Subject to Alterations



We reserve the right to make alterations to the technical data, dimensions, weights, designs and products available without notice. The illustrations cannot be considered binding.