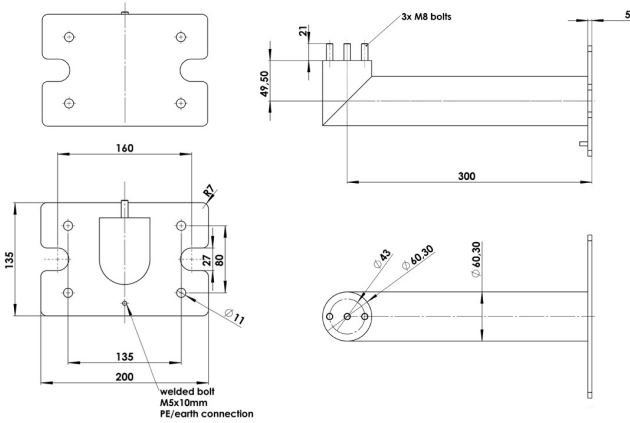


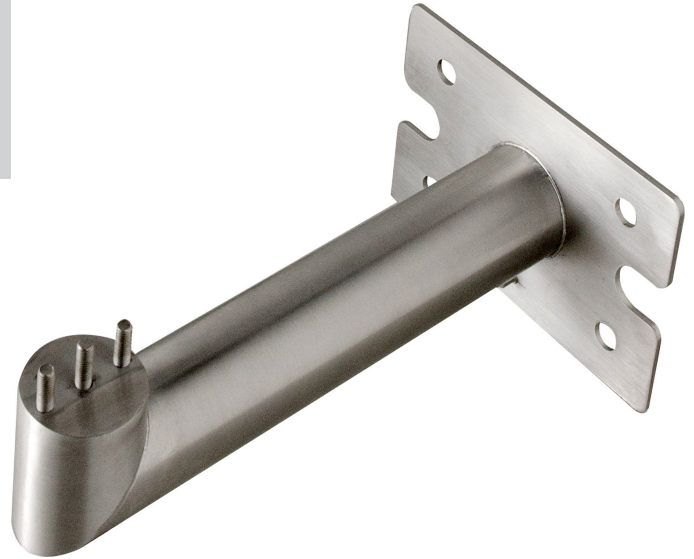
WALL BRACKET EC-94x-AFZ

Order No. 257043

Material: Stainless steel 1.4404 / 316L, electropolished
 Weight: ~ 3 Kg
 Load rating: 40 Kg
 Dimensions: 330 x 200 x 160mm



Size in millimeters

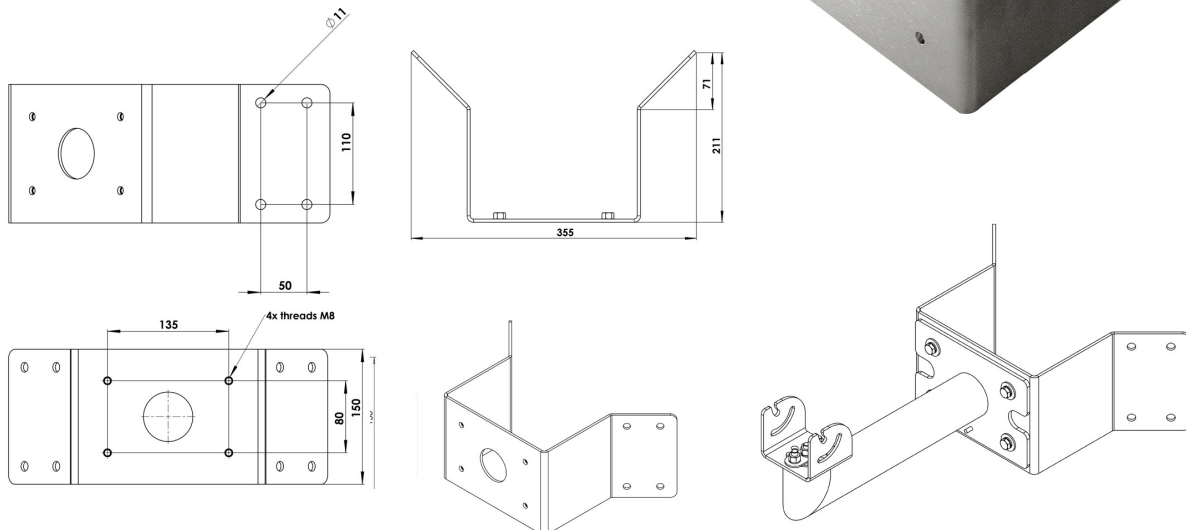
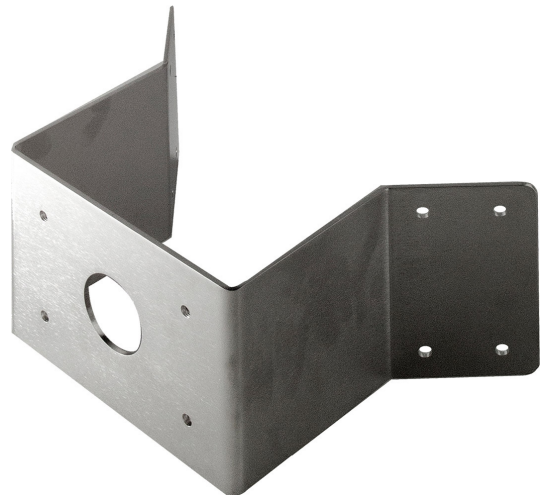


CORNER ADAPTER MODULE EC-94x-AFZ

Order No. 257048

Material: Stainless steel 1.4404 / 316L, electropolished
 Weight: ~3.2 Kg
 Load rating: 40 Kg
 Dimension: 355 x 211 x 150mm

Corner Adapter needs wall bracket for camera mounting.



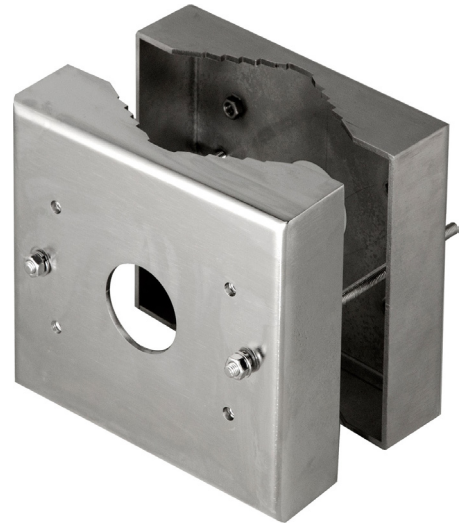
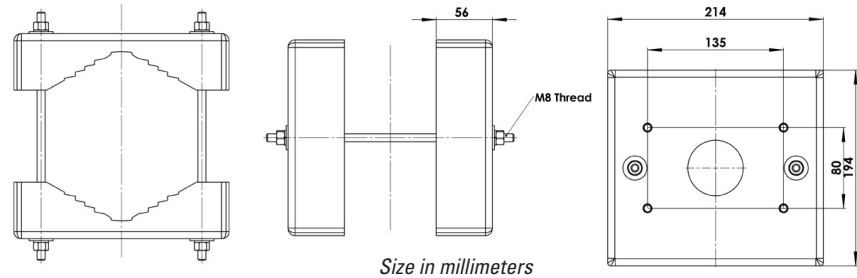
Size in millimeters

POLE ADAPTER MODULE EC-94x-AFZ

Order No. 257047

Material: Stainless steel 1.4404 / 316L, electropolished
 Weight: ~4.7 Kg
 Load rating: 40 Kg
 Dimension: 214 x 194 mm
 Pole diameter: 88 - 150 mm

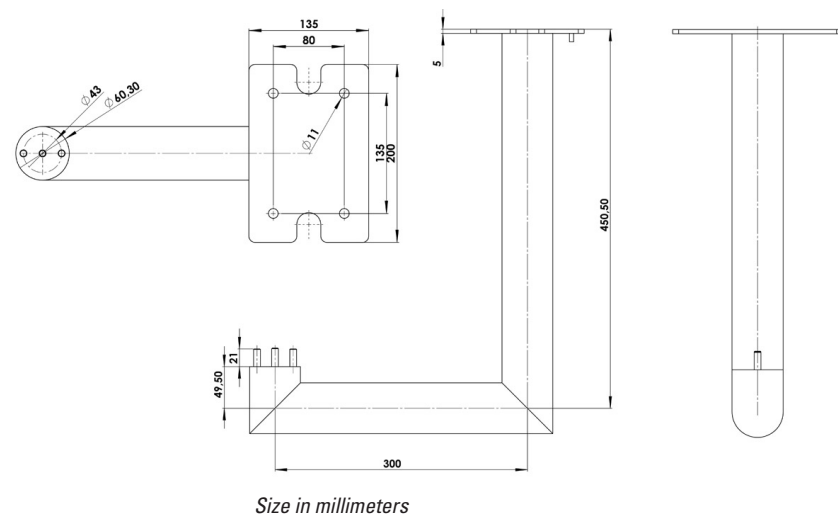
Pole adapter needs wall bracket for camera mounting



PARAPET MOUNTING BRACKET EC-94x-AFZ

Order No. 257049

Material: Stainless steel 1.4404 / 316L, electropolished
 Weight: ~4.5 Kg
 Load rating: ~40 Kg
 Dimensions: 330 x 200 x 450.5 mm



POE++ Extender for EC-940-HDI-06H

Order No. 256800

PoE++ performance up to 60W
 Ideal cable type: Cat5e or better
 Input Voltage: 52-57V DC
 Power Consumption: 80W
 Temperature range: -20°C to +75°C
 Dimensions: 3 x 9.53 x 12.6 cm
 Weight: 290g
 Supports Jumbo frames up to 9kB

