
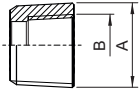

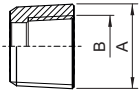


# Reducers Series RE



Selection Table

Version	Dimensions [mm]		Type	Art. no.	Weight kg
	A	B			
Reducers Series RE, with male / female union, galvanized steel    00687E00 06466E00	NPT ¾"	NPT ½"	<b>RE21</b>	<b>108543</b>	0.038
	NPT 1"	NPT ½"	<b>RE31</b>	<b>108544</b>	0.089
		NPT ¾"	<b>RE32</b>	<b>108545</b>	0.058
	NPT 3"	NPT 2 ½"	<b>RE87</b>	<b>108570</b>	0.578
Reducers Series RE, with male / female union, aluminium    00687E00 06466E00	NPT 1 ¼"	NPT ½"	<b>RE41</b>	<b>108546</b>	0.064
		NPT ¾"	<b>RE42</b>	<b>108547</b>	0.053
		NPT 1"	<b>RE43</b>	<b>108548</b>	0.034
	NPT 1 ½"	NPT ½"	<b>RE51</b>	<b>108549</b>	0.092
		NPT ¾"	<b>RE52</b>	<b>108550</b>	0.079
		NPT 1"	<b>RE53</b>	<b>108551</b>	0.061
	NPT 2"	NPT 1 ¼"	<b>RE54</b>	<b>108552</b>	0.029
		NPT ½"	<b>RE61</b>	<b>108553</b>	0.153
		NPT ¾"	<b>RE62</b>	<b>108554</b>	0.148
		NPT 1"	<b>RE63</b>	<b>108555</b>	0.124
		NPT 1 ¼"	<b>RE64</b>	<b>108556</b>	0.095
	NPT 2 ½"	NPT 1 ½"	<b>RE65</b>	<b>108557</b>	0.068
		NPT ½"	<b>RE71</b>	<b>108558</b>	0.244
		NPT ¾"	<b>RE72</b>	<b>108559</b>	0.243
		NPT 1"	<b>RE73</b>	<b>108560</b>	0.272
		NPT 1 ¼"	<b>RE74</b>	<b>108561</b>	0.238
	NPT 3"	NPT 1 ½"	<b>RE75</b>	<b>108562</b>	0.198
		NPT 2"	<b>RE76</b>	<b>108563</b>	0.136
		NPT ½"	<b>RE81</b>	<b>108564</b>	0.416
		NPT ¾"	<b>RE82</b>	<b>108565</b>	0.355
		NPT 1"	<b>RE83</b>	<b>108566</b>	0.323
		NPT 1 ¼"	<b>RE84</b>	<b>108567</b>	0.302
		NPT 1 ½"	<b>RE85</b>	<b>108568</b>	0.318
	NPT 2"	<b>RE86</b>	<b>108569</b>	0.249	

E10

WebCode REA

# Reducers

## Series RE

### Explosion Protection

#### Europe (ATEX)

Gas	CESI 02 ATEX 049 ⊕ II 2 G Ex d IIC / Ex e II
-----	-------------------------------------------------

#### Certifications and certificates

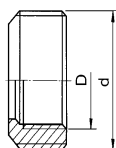
Certificates	ATEX, Kazakhstan (TR), Russia (TR), Belarus (TR)
--------------	--------------------------------------------------

### Technical Data

#### Mechanical data

Material	galvanized steel or aluminium
----------	-------------------------------

### Dimensional Drawings (All Dimensions in mm) - Subject to Alterations



03557E00

Type	Dimensions			A [mm]
	d	D min	D max	
RE21	NPT 3/4"		NPT 1/2"	23
RE3..	NPT 1"	NPT 1/2"	NPT 3/4"	24
RE4..	NPT 1 1/4"	NPT 1/2"	NPT 1"	26
RE5..	NPT 1 1/2"	NPT 1/2"	NPT 1 1/4"	26
RE6..	NPT 2"	NPT 1/2"	NPT 1 1/2"	30
RE7..	NPT 2 1/2"	NPT 1/2"	NPT 2"	35
RE8..	NPT 3"	NPT 1/2"	NPT 2 1/2"	41

We reserve the right to make alterations to the technical data, dimensions, weights, designs and products available without notice. The illustrations cannot be considered binding.