

Potentiometers for Panel Mounting

Series 8455



www.stahl.de



- > For panel mounting
- > Versions with
 - connection lead
 - connection terminals
- > Resistance range from 100 Ω ... 1 M Ω
- > Power 2 W

10029E00



E4

The analogue user interface of the potentiometers Series 8455 allow simple adjustment of the nominal value. The devices are available with a connection lead or with connection terminals.

Zone	ATEX / IECEx					
	0	1	2	20	21	22
8455/2: For use in		x	x		x	x
8455/4: For use in		x	x			

WebCode 8455A

Potentiometers for Panel Mounting

Series 8455

Selection Table

Version	Resistance values	with connection lead, 6 m Order number	with terminals Order number	Weight kg
Potentiometer	1 k Ω	8455/2-1kOhm-. -6	8455/4-1kOhm- .	0.160
	2.2 k Ω	8455/2-2,2kOhm-. -6	8455/4-2,2kOhm- .	0.160
	4.7 k Ω	8455/2-4,7kOhm-. -6	8455/4-4,7kOhm- .	0.160
	10 k Ω	8455/2-10kOhm-. -6	8455/4-10kOhm- .	0.160
	22 k Ω	8455/2-22kOhm-. -6		0.600
	100 k Ω	8455/2-100kOhm-. -6		0.600
	220 k Ω		8455/4-220kOhm- .	0.160
	1 M Ω	8455/2-1MOhm-. -6		0.600

Order Number Supplement

Actuator with scale*:	0 ... 6	8455/2-...Ohm-0/6-6	8455/4-...Ohm-0/6
	0 ... 10	8455/2-...Ohm-0/10-6	8455/4-...Ohm-0/10
	0 ... 100	8455/2-...Ohm-0/100-6	8455/4-...Ohm-0/100
	* Further scales on request		
Note	further cable lengths on request		

Explosion Protection

Version	8455/2 with 6 m connecting cable	8455/4 with terminals
Global (IECEx)		
Gas and dust	IECEx PTB 07.0002 X Ex dm IIC T6 (Ta = - 20 ... + 40 °C) Ex dm IIC T5 (Ta = - 20 ... + 55 °C) Ex tD A21 IP65 T95°C (Ta = - 20 ... + 55 °C) Ex tD A21 IP65 T80°C (Ta = - 20 ... + 40 °C)	IECEx PTB 07.0001 U Ex dem IIC T6 (Ta = - 20 ... + 40 °C) Ex dem IIC T5 (Ta = - 20 ... + 55 °C) --
Europe (ATEX)		
Gas and dust	PTB 02 ATEX 2156 X ⊕ II 2 G Ex d mb IIC T6 (Ta = - 20 ... + 40 °C) ⊕ II 2 G Ex d mb IIC T5 (Ta = - 20 ... + 55 °C) ⊕ II 2 D Ex tD A21 IP65 T80°C (Ta = - 20 ... + 40 °C) ⊕ II 2 D Ex tD A21 IP65 T95°C (Ta = - 20 ... + 55 °C)	PTB 02 ATEX 2157 U ⊕ II 2 G Ex de mb IIC T6 (Ta = - 20 ... + 40 °C) ⊕ II 2 G Ex de mb IIC T5 (Ta = - 20 ... + 55 °C) --

Certifications and certificates

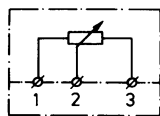
Certificates	IECEx, ATEX, Serbia (SRPS)
--------------	----------------------------

Technical Data

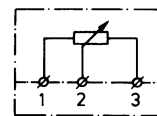
Electrical data

Rated operational voltage
Rated operational power
Characteristics
Resistance tolerance
Resistor material
Resistance values
Circuit diagram

400 V
2 W
linear
 $\pm 20 \%$
Carbon film
100 Ω ... 1 M Ω



400 V
2 W
linear
 $\pm 20 \%$
Carbon film
100 Ω ... 1 M Ω



06065E00

06065E00

Potentiometers for Panel Mounting

Series 8455

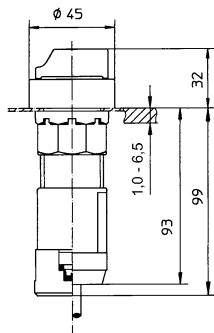


Technical Data

Ambient conditions		
Ambient temperature	see explosion protection data	see explosion protection data
Mechanical data		
Version	8455/2 with 6 m connecting cable	8455/4 with terminals
Degree of protection	IP66	IP20
Enclosure material	Polyamide	Polyamide
Cable length	6 m, further on request	--
Scale	0 ... 6, 0 ... 10, 0 ... 100, further on request	0 ... 6, 0 ... 10, 0 ... 100, further on request
Rotary knob		
Rotation range	270°	270°
Torque	0.7 ... 2 Ncm	0.7 ... 2 Ncm
Stop strength	≥ 100 Ncm	≥ 100 Ncm
Mounting / Installation		
Version	8455/2 with 6 m connecting cable	8455/4 with terminals
Connection type	Connection lead similar to HO5VV-F, 3 x 0.75 mm ²	Terminals 1.5 mm ² finely-stranded
Note	Each potentiometer needs a back-up fuse according to its rated current as short circuit protection (max. 3xI _B according to IEC/EN 60127-2-1).	

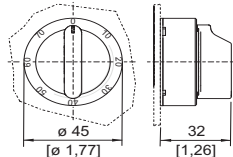
E4

Dimensional Drawings (All Dimensions in mm) - Subject to Alterations



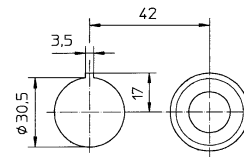
8455 Potentiometer

04430E00



Actuator

04431E00



Cut-out for aligning several devices, diameter 38 mm, in a panel

04488E00

We reserve the right to make alterations to the technical data, dimensions, weights, designs and products available without notice. The illustrations cannot be considered binding.