



- 8 channels for pneumatic valves
- Pneumatic outputs with integrated 3/2-way valves and SIL2 shut-down input
- Module in Zone 1 can be replaced without having to disconnect the power supply (i.e. hot-swapped)

A4

MY R. STAHL 9478A



The 9478 digital output module valve for Zone 1 has eight channels for controlling pneumatic valves. The integrated 3/2-way solenoid valves are monitored to check for wire breakage and short-circuiting regardless of the control status. An additional Ex i control input is suitable for safe shutdown up to SIL 2. Operation in combination with Ex i I/O modules is permissible.

	IECEX / ATEX					
Zone	0	1	2	20	21	22
Installation in		•	•			

	NEC® 500 CE Code Appendix J					
	Class I		Class II		Class III	
Division	1	2	1	2	1	2
Installation in	•	•				

	CE Code Section 18					
	NEC® 505			NEC® 506		
	Class I					
Zone	0	1	2	20	21	22
Installation in		•	•			

Selection Table

Product variant	Digital output module valve for Zone 1					
No. of pneumatic valves	Min. pressure range	Max. pressure range	Product Type	Art. No.	Weight	
8 x 3/2-valves	2.5 bar	7 bar	9478/22-08-51	203599	950 g	

Technical Data

Explosion Protection	
IECEX gas explosion protection	Ex ib IIC T4
ATEX gas explosion protection	Ⓜ II 2 G Ex ib IIC T4
Certificates	ATEX (PTB), Canada (FM), China (NEPSI), IECEX (PTB), Korea (KTL), SIL (exida), USA (FM)
Ship approval	ABS, BVIS, EU RO MR (DNV), KR, LR
Auxiliary Power	
Max. power consumption	5.75 W When pilot valves are actuated
Undervoltage monitoring	All outputs are depressurised
Input	
Control input suitability	Shutdown up to SIL 2, low demand (IEC 61508)
Control input function	Plant STOP, outputs are depressurised
Device Specific Data	
Media pneumatic data	Compressed air oiled Dry Neutral gases (5 µm filter recommended) Oil-free
Manual actuation pneumatic data	Yes
Switching times pneumatic data	Approx. 1000 c.p.m.
Qn value pneumatic data	300 l/min
Pneumatic data Qn value note	At an air temperature of 20 °C, 6 bar at the valve input and 1 bar of differential pressure

Technical Data

Device Specific Data

Pneumatic connections	P, R: Dia. 8 mm pluggable coupling Y0 to Y7: Dia. 6 mm pluggable coupling X: Standard sound absorber (included in delivery and preinstalled)
-----------------------	--

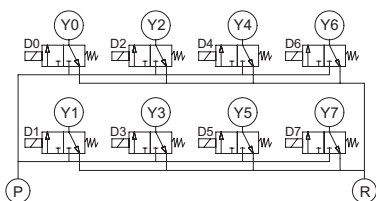
Ambient Conditions

Ambient temperature	0°C ... +60°C
---------------------	---------------

Mechanical Data

Degree of protection (IP) (IEC 60529)	IP20
Enclosure material	Polyamide 6GF
Sealing material	FPM, NBR
Valve block material	PPS, PA
Width	96.5 mm
Height	163 mm
Length	128 mm

Technical Drawings – Subject to Alterations



9478 connection diagram

Dimensional Drawings (All Dimensions in mm [inches]) – Subject to Alterations

