



- Lamp: Flashing beacon – XENON (5 J)/LED (6.5 W)
- Horn: Omnidirectional/max. 110 db(A)
- Type of protection: Ex d
- Class: IP66 (IEC 60529/NEMA 4X)
- Corrosion-resistant GRP enclosure
- Including stainless steel protective cage and fastening bracket
- Eight light-amplifying Fresnel lens colours can be ordered
- 32 standardised preconfigured signal tones (compatible with PFEER/UKOOA)
- Separate signal tones can be selected (2 for AC, 3 for DC variants)
- Signal tone reduction can be set up to 18 dB(A)
- Connection for telephone systems/line monitoring can be ordered as an option

E5

## MY R. STAHL YL6SA



The **YL6S product series** provides audible and visual alarm signals which can be used to alert, warn or draw attention to equipment malfunction/start-up or any number of safety-related issues. The audible and visual signals can be operated separately or in combination. Corrosion resistance is a key feature of the device; it is therefore ideal for applications in the harshest of environments, both onshore and offshore.

	IECEX / ATEX					
Zone	0	1	2	20	21	22
Installation in		•	•		•	•

Selection Table					
Lamp LED					
Lens colour	Rated operational voltage AC	Rated operational voltage DC	Product Type	Art. No.	Weight
Amber	–	21.1 ... 24 V	YL6S/21-DV0000-AW0003-ST0000-0000	284531	4.44 kg
Red	–	21.1 ... 24 V	YL6S/21-DV0000-RR0003-ST0000-0000	284530	4.44 kg
Yellow	–	21.1 ... 24 V	YL6S/21-DV0000-YW0003-ST0000-0000	284532	4.44 kg
Lamp Xenon flash tubes					
Lens colour	Rated operational voltage AC	Rated operational voltage DC	Product Type	Art. No.	Weight
Amber	115 V	–	YL6S/C-L-050-A-EN-SF-A-ST-00-00-00	225105	4.44 kg
	230 V	–	YL6S/C-N-050-A-EN-SF-A-ST-00-00-00	225113	4.44 kg
	–	21.1 ... 24 V	YL6S/21-D05000-AW0003-ST0000-0000	284524	4.44 kg
	–	24 V	YL6S/C-D-050-A-EN-SF-A-ST-00-00-00	225076	4.44 kg
	–	48 V	YL6S/C-F-050-A-EN-SF-A-ST-00-00-00	225087	4.44 kg
Blue	115 V	–	YL6S/C-L-050-B-EN-SF-A-ST-00-00-00	225106	4.44 kg
	230 V	–	YL6S/C-N-050-B-EN-SF-A-ST-00-00-00	225114	4.44 kg
	–	24 V	YL6S/C-D-050-B-EN-SF-A-ST-00-00-00	225078	4.44 kg

Selection Table					
Lamp	Xenon flash tubes				
Lens colour	Rated operational voltage AC	Rated operational voltage DC	Product Type	Art. No.	Weight
Clear	115 V	-	YL6S/C-L-050-C-EN-SF-A-ST-00-00	225101	4.44 kg
	230 V	-	YL6S/C-N-050-C-EN-SF-A-ST-00-00	225109	4.44 kg
	-	24 V	YL6S/C-D-050-C-EN-SF-A-ST-00-00	225072	4.44 kg
		48 V	YL6S/C-F-050-C-EN-SF-A-ST-00-00	225081	4.44 kg
Green	230 V	-	YL6S/C-N-050-G-EN-SF-A-ST-00-00	225115	4.44 kg
	-	24 V	YL6S/C-D-050-G-EN-SF-A-ST-00-00	225079	4.44 kg
Red	115 V	-	YL6S/C-L-050-R-EN-SF-A-ST-00-00	225104	4.44 kg
	230 V	-	YL6S/C-N-050-R-EN-SF-A-ST-00-00	225112	4.44 kg
	-	21.1 ... 24 V	YL6S/21-D05000-RW0003-ST0000-0000	284525	4.44 kg
		24 V	YL6S/C-D-050-R-EN-SF-A-ST-00-00	225075	4.44 kg
		48 V	YL6S/C-F-050-R-EN-SF-A-ST-00-00	225086	4.44 kg
Yellow	115 V	-	YL6S/C-L-050-Y-EN-SF-A-ST-00-00	225103	4.44 kg
	230 V	-	YL6S/C-N-050-Y-EN-SF-A-ST-00-00	225111	4.44 kg
	-	21.1 ... 24 V	YL6S/21-D05000-YW0003-ST0000-0000	284526	4.44 kg
		24 V	YL6S/C-D-050-Y-EN-SF-A-ST-00-00	225074	4 kg
		48 V	YL6S/C-F-050-Y-EN-SF-A-ST-00-00	225084	4.44 kg




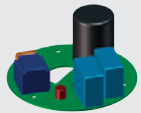

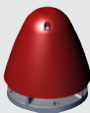
Additional gas group variants and local certifications are available; please use the selection table online at [r-stahl.com](http://r-stahl.com). MY R. STAHL YL6SA

Technical Data			
Variant	YL6S/21 DC	YL6S/C-L, YL6S/C-N AC	YL6S/C-F DC
<b>Explosion Protection</b>			
IECEx gas explosion protection	Ex db IIC T6 / T4 Gb	Ex d IIC T5 / T4 Gb	Ex d IIC T5 / T4 Gb
IECEx dust explosion protection	Ex tb IIIC T80 °C / T100 °C Db	Ex tb IIIC T95 °C / T110 °C Db	Ex tb IIIC T95 °C / T110 °C Db
ATEX gas explosion protection	⊕ II 2 G Ex db IIC T6 / T4 Gb	⊕ II 2 G Ex d IIC T5 / T4 Gb	⊕ II 2 G Ex d IIC T5 / T4 Gb
ATEX dust explosion protection	⊕ II 2 D Ex tb IIIC T80 °C / T100 °C Db	⊕ II 2 D Ex tb IIIC T95 °C / T110 °C Db	⊕ II 2 D Ex tb IIIC T95 °C / T110 °C Db
Certificates	ATEX (BVIS), IECEx (BVIS)	ATEX (BAS), IECEx (BAS)	ATEX (BAS), IECEx (BAS)
Declaration of Conformity	ATEX (EUK)	ATEX (EUK)	ATEX (EUK)
<b>Electrical Data</b>			
Line monitoring	Yes	Yes	Yes
Tolerance	-10 ... 10 %	-10 ... 10 %	-10 ... 10 %
<b>Acoustic Data</b>			
Sound pressure level	max. 110 dB(A) @ 1 m	max. 110 dB(A) @ 1 m	max. 110 dB(A) @ 1 m
Tone selection	Via DIL switch	Via DIL switch	Via DIL switch
Sound level	4	2	3
Volume control	Max. -18 dB(A) adjustment	18 dB (A) adjustment	18 dB (A) adjustment
Volume adjustment	Via DIL switch	Potentiometer	Potentiometer

Technical Data			
Variant	YL6S/21 DC	YL6S/C-L, YL6S/C-N AC	YL6S/C-F DC
<b>Ambient Conditions</b>			
Ambient temperature	-60 °C ... +50 °C (T6) -60 °C ... +70 °C (T4)	-60 °C ... +40 °C (T5) -60 °C ... +55 °C (T4)	-60 °C ... +40 °C (T5) -60 °C ... +55 °C (T4)
Functional ambient temperature	-40 °C ... +50 °C (T6) -40 °C ... +70 °C (T4)	-40 °C ... +40 °C (T5) -40 °C ... +55 °C (T4)	-50 °C ... +40 °C (T5) -50 °C ... +55 °C (T4)
<b>Mechanical Data</b>			
Degree of protection (IP) (IEC 60529)	IP66	IP66/IP67	IP66/IP67
Enclosure material	Polyester, Glass fibre reinforced	Polyester, Glass fibre reinforced	Polyester, Glass fibre reinforced
Trumpet material	ABS, flame retardant	ABS, flame retardant	ABS, flame retardant
Material dome	Polycarbonate, prismatic	Polycarbonate, prismatic	Polycarbonate, prismatic
Wire guard material	Stainless steel	Stainless steel	Stainless steel
Max. solid connection terminals	2.5 mm <sup>2</sup>	2.5 mm <sup>2</sup>	2.5 mm <sup>2</sup>
Max. finely stranded connection terminals	2.5 mm <sup>2</sup>	2.5 mm <sup>2</sup>	2.5 mm <sup>2</sup>
Enclosure colour	Black	Black	Black
<b>Mounting / Installation</b>			
Mounting part material	Stainless steel	Stainless steel	Stainless steel
Note about mounting	Provided	Provided	Provided
Connection type	Push in	Screw terminal	Screw terminal
<b>Components</b>			
Drilled holes	2 x M20	2 x M20	2 x M20
Cable glands and entries	Can be ordered as accessories	Can be ordered as accessories	Can be ordered as accessories
Stopping plugs	2 x dust cap	2 x dust cap	2 x dust cap

You can find more technical data online at [r-stahl.com](http://r-stahl.com). MY R. STAHL YL6SA

Accessories			
Figure	Description	Art. No.	Weight
<b>Metal cable gland</b>			
	Ex d and Ex e cable gland with compound for all types of armoured cables (SWA, wire-braid, tape) (nickel-plated brass) Type 20PX2K, M20 x 1.5	109428	240 g
	Ex d and Ex e cable glands with RapidEx sealing system for all types of unarmoured cables and wire-braid-armoured cables (nickel-plated brass) Type 20PX2K-REX, M20 x 1.5	246649	240 g
	Ex d and Ex e cable glands with compound for all types of unarmoured cables and wire-braid-armoured cables (nickel-plated brass) Type 20PXSS2K, M20 x 1.5	109441	200 g
	Ex d and Ex e cable glands with RapidEx sealing system for all types of unarmoured cables and wire-braid-armoured cables (nickel-plated brass) Type 20PXSS2K-REX, M20 x 1.5	246605	200 g
<b>Mounting accessories</b>			
	Stainless steel L-bracket, standard version	221711	287 g
	Stainless steel L-bracket, long version	247371	280 g
	Adapter plate for pipe clamp fastening	256519	630 g
	Pipe clamp, R 1 1/4"	120812	500 g
	Pipe clamp, R 1 1/2"	120819	470 g
	Pipe clamp, R 2"	120823	500 g

Spare Parts			
Figure	Description	Art. No.	Weight
<b>Flange</b>			
	Flange, ATEX, amber (available for FL6S, FX15, YL6S)	243407	1.19 kg
	Flange, ATEX, blue (available for FL6S, FX15, YL6S)	243406	1.19 kg
	Flange, ATEX, clear (available for FL6S, FX15, YL6S)	223578	1.19 kg
	Flange, ATEX, green (available for FL6S, FX15, YL6S)	243405	1.19 kg
	Flange, ATEX, red (available for FL6S, FX15, YL6S)	243408	1.19 kg
	Flange, ATEX, yellow (available for FL6S, FX15, YL6S)	243409	1.19 kg
<b>Fresnel lens</b>			
	Fresnel lens, amber, spare	292060	180 g
	Fresnel lens, blue, spare	292141	180 g
	Fresnel lens, green, spare	292143	180 g
	Fresnel lens, clear, spare	292144	180 g
	Fresnel lens, red, spare	292147	180 g
	Fresnel lens, yellow, spare	292142	180 g
<b>PCB</b>			
	Connection PCB	223579	20 g
	Electronic PCB, 24 V DC, 5 J (available for FL6S, FX15, YL6S)	223635	80 g
	Electronic PCB, 115 V AC, 5 joules	223632	118 g
	Electronic PCB, 230 V AC, 5 Joule	223580	100 g
<b>Lamp</b>			
	Xenon lamp	223636	6 g
<b>Shaped horn assembly kit</b>			
	Shaped horn YA60/YL60/YA6S/YL6S spare ATEX	213457	105 g

A lens protective cage (VA) and fastening bracket (VA) are supplied as standard.

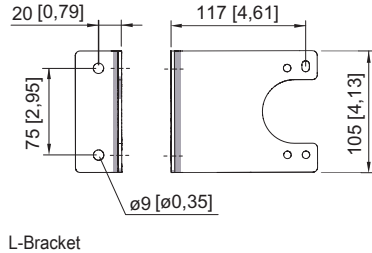
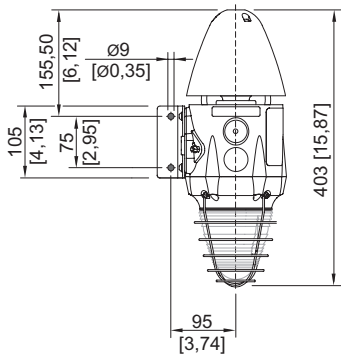
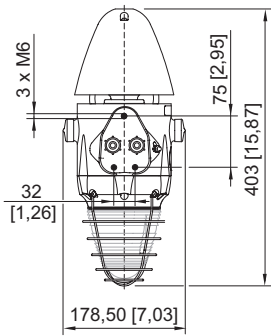
# Audible and visual signalling device

Series YL6S GRP

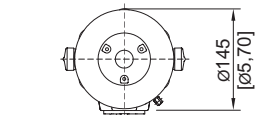


Dimensional Drawings (All Dimensions in mm [inches]) – Subject to Alterations

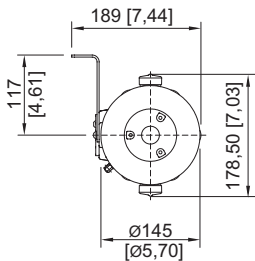
E5



L-Bracket



GRP  
Combination Signal Series YL6S without L-Bracket



GRP Combination Signal Series YL6S with L-Bracket