



- Use of standard wireless devices in Zone 2
- Use of devices with internal antennas possible
- Simplified installation and maintenance thanks to separate connection chamber
- There is no need to regularly check the leak-tightness of the Ex nR enclosure section
- Low weight

A5

MY R. STAHL 9851A



The 9851 wireless enclosure system enables the use of standard wireless devices such as the WiFi access point, gateways with mobile communications, LoRaWAN, Bluetooth or RFID readers in Zone 2 that do not have approval for operation in hazardous areas. Compared with solutions based on Ex d enclosures made of metal, the weight is reduced by up to 70%. The effort required for mounting is significantly reduced. The enclosure is made of glass fibre reinforced plastic, which allows the radio signals to be emitted, meaning that external antennas are not required. The connection is established via a separate connection chamber, which means that no access to the Ex nR enclosure is required and minimises maintenance work.

	IECEX / ATEX					
Zone	0	1	2	20	21	22
Installation in			•			

Selection Table			
Version	Ex nR/ec enclosure		
Product Type		Art. No.	Weight
9851/5-...		285180	-

Technical Data	
Explosion Protection	
IECEX gas explosion protection	Ex ec nR IIC T6...T4 Gc
ATEX gas explosion protection	Ⓔ II 3 G Ex ec nR IIC T6...T4 Gc
Declaration of Conformity	ATEX (EUK)
Electrical Data	
Frequency band	Depends on installed device
Grid-bound interface	Depends on installed device
Auxiliary power PoE	Yes
Max. emitted power	For IIC: 2 W For IIB: 3.5 W For IIA: 6 W
Ambient Conditions	
Ambient temperature	-40 °C ... +70 °C Depends on installed device
Storage temperature	-40 °C ... +70 °C depending on the built-in device
Maximum relative humidity	5 to 95%
Use at the height of	≤ 2000 m

Technical Data

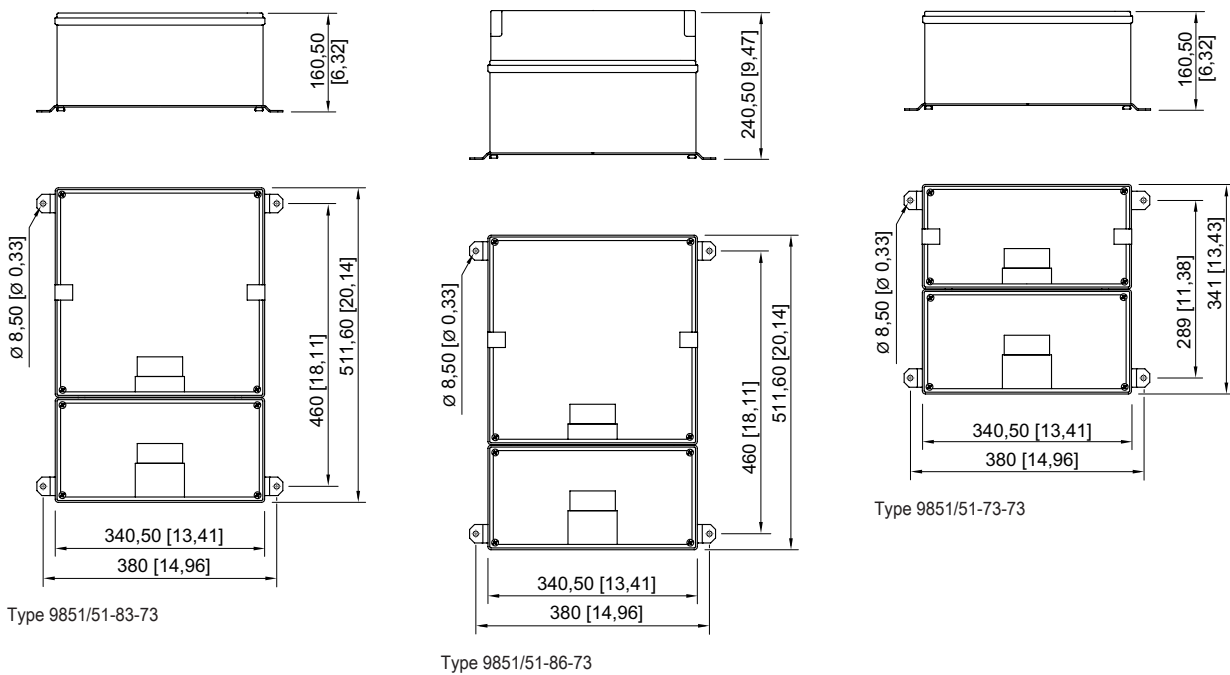
Mechanical Data

Degree of protection (IP)	IP66
Min. dimensions	341 x 341 x 161 mm
Max. dimensions	853 x 341 x 241 mm
Dimensions note	Depends on installed device
Dimensions note 2	incl. connection chamber, without cable glands

Mounting / Installation

Mounting type	Wall and ceiling mounting
---------------	---------------------------

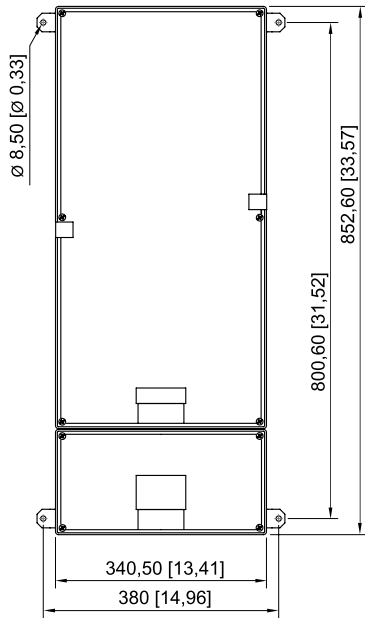
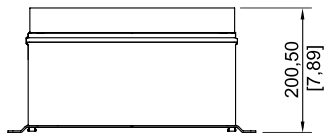
Dimensional Drawings (All Dimensions in mm [inches]) – Subject to Alterations



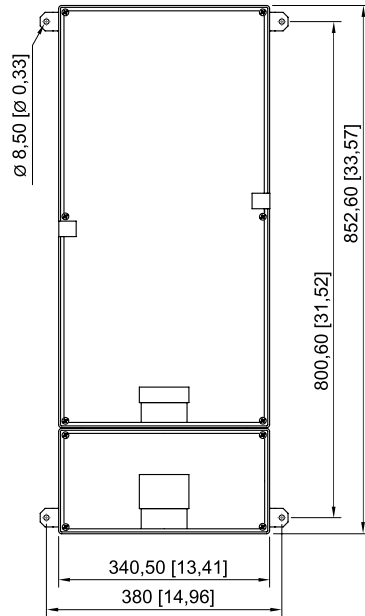
Type 9851/51-83-73

Type 9851/51-86-73

Type 9851/51-73-73



Type 9851/51-93-73



Type 9851/51-95-73