



- Wide selection of different actuators
- Versions as NC with positive opening, NO or disconnect terminal

E4

MY R. STAHL 8082D



R. STAHL Series 8082 contact elements have an NO contact and a positive opening NC contact, either made of silver-nickel or gold-plated. They can easily be combined to form contact blocks and enable customised installations, in part due to the wide selection of different actuators.

	IECEX / ATEX					
Zone	0	1	2	20	21	22
Installation in		•	•			

	NEC® 500 CE Code Appendix J					
	Class I		Class II		Class III	
Division	1	2	1	2	1	2
Installation in		•		•		

	CE Code Section 18 NEC® 505   NEC® 506					
	Class I					
Zone	0	1	2	20	21	22
Installation in		•	•			

Selection Table								
Product description Contact element for front installation Ex e								
Number of NCs	Number of NOs	Contact material	Packaging unit	Positive opening operation	Positive opening operation	Product Type	Art. No.	Weight
1	–	Silver-nickel	1	Yes	–	8082C3-21-1-0	315695	90 g
5	5	Silver-nickel	10	Yes	for NC contacts only	8082C3-21-3-0	315699	900 g
10	–	Silver-nickel	10	Yes	–	8082C3-21-1-0	315697	900 g
–	1	Silver-nickel	1	–	–	8082C3-21-2-0	315696	90 g
–	10	Silver-nickel	10	–	–	8082C3-21-2-0	315698	900 g
Product description Contact element for front installation With gold-plated contacts								
Number of NCs	Number of NOs	Contact material	Packaging unit	Positive opening operation	Positive opening operation	Product Type	Art. No.	Weight
1	–	Gold-plated	1	Yes	–	8082C3-21-1-1	349413	90 g
–	1	Gold-plated	1	–	–	8082C3-21-2-1	349414	90 g
Product description Contact element for installation on mounting rail Ex e								
Number of NCs	Number of NOs	Contact material	Packaging unit	Positive opening operation	Positive opening operation	Product Type	Art. No.	Weight
1	–	Silver-nickel	1	Yes	–	8082C3-11-1-0	348810	90 g
5	5	Silver-nickel	10	Yes	for NC contacts only	8082C3-11-3-0	348814	900 g
10	–	Silver-nickel	10	Yes	–	8082C3-11-1-0	348812	900 g
–	1	Silver-nickel	1	–	–	8082C3-11-2-0	348811	90 g
–	10	Silver-nickel	10	–	–	8082C3-11-2-0	348813	900 g
Product description Contact element for installation on mounting rail With gold-plated contacts								
Number of NCs	Number of NOs	Contact material	Packaging unit	Positive opening operation	Positive opening operation	Product Type	Art. No.	Weight
1	–	Gold-plated	1	Yes	–	8082C3-11-1-1	349415	90 g
–	1	Gold-plated	1	–	–	8082C3-11-2-1	349416	90 g

The actuators from Series 8602/3 assemblies ASSY 001, ASSY 003, ASSY 004, ASSY 006, ASSY 008, ASSY 009, ASSY 010, ASSY 012, ASSY 014, ASSY 015, ASSY 023, ASSY 703, ASSY 726, ASSY 727 and ASSY 735 can be equipped with up to four contact elements.

The contact elements can be combined in different ways.

Technical Data		
Variant	Contact material: Silver-nickel	Contact material: Gold-plated
<b>Explosion Protection</b>		
IECEX gas explosion protection	Ex db eb IIC T6 / T5 Gb	Ex db eb IIC T6 / T5 Gb
ATEX gas explosion protection	Ⓔ II 2 G Ex db eb IIC T6 / T5 Gb	Ⓔ II 2 G Ex db eb IIC T6 / T5 Gb
Marking cULus	Class I, Div. 2, Groups A,B,C,D; Class I, Zone 1, AEx/Ex db eb IIC	Class I, Div. 2, Groups A,B,C,D; Class I, Zone 1, AEx/Ex db eb IIC
Certificates	ATEX (PTB), Brazil (ULB), Canada (UL), China (CQST), IECEx (PTB), Korea (KTL), USA (UL)	ATEX (PTB), Brazil (ULB), Canada (UL), China (CQST), IECEx (PTB), Korea (KTL), USA (UL)
Notes	Product label may vary. Series devices are labelled with ATEX, IECEx, NEC® and CE Code.	
<b>Electrical Data</b>		
Max. rated operational voltage	550 V	550 V
Min. rated operational voltage	24 V	24 V
Electrical service life	10 <sup>6</sup> operating cycles	10 <sup>6</sup> operating cycles
Mechanical service life	10 <sup>6</sup> operating cycles	10 <sup>6</sup> operating cycles
Rated operational current	150 mA / 0 A	10 mA / 0 mA
Rated operational current note	- Gold-plated contacts: 10 to 150 mA switching current - Silver-nickel contacts for a switching current of 150 mA and above - For switching currents < 100 mA in corrosive environments and offshore applications, the use of 8208 snap-action switches is recommended.	- Gold-plated contacts: 10 to 150 mA switching current - Silver-nickel contacts for a switching current of 150 mA and above - For switching currents < 100 mA in corrosive environments and offshore applications, the use of 8208 snap-action switches is recommended.
Switching capacity AC-12	250 V / 10 A 400 V / 7.5 A 550 V / 5 A	
Switching capacity AC-15	110 V / 10 A 250 V / 6 A 400 V / 4 A	
Switching capacity DC-13	110 V / 1 A	
Switching capacity DC-13<SoftReturn/>2 contact elements in series	60 V/6 A 110 V/2.5 A 250 V/1.25 A	
<b>Ambient Conditions</b>		
Ambient temperature	-60 °C ... +70 °C (T6) -60 °C ... +85 °C (T5)	-60 °C ... +70 °C (T6) -60 °C ... +85 °C (T5)
Ambient temperature	-76 °F ... +158 °F (T6) -76 °F ... +185 °F (T5)	-76 °F ... +158 °F (T6) -76 °F ... +185 °F (T5)
Ambient temperature NEC®	-60 °C ... +75 °C (T6) -60 °C ... +90 °C (T5)	-60 °C ... +75 °C (T6) -60 °C ... +90 °C (T5)
Ambient temperature NEC®	-76 °F ... +167 °F (T6) -76 °F ... +194 °F (T5)	-76 °F ... +167 °F (T6) -76 °F ... +194 °F (T5)
Operating temperature	-60 °C ... +100 °C	-60 °C ... +100 °C
Operating temperature	-76 °F ... +212 °F	-76 °F ... +212 °F
Operating temperature NEC®	-60 °C ... +95 °C	-60 °C ... +95 °C
Operating temperature NEC®	-76 °F ... +203 °F	-76 °F ... +203 °F
Notes	Group installation: Installation conditions influence the ambient temperature	
<b>Mechanical Data</b>		
Degree of protection (IP) (IEC 60529)	IP20	IP20
Enclosure material	Polyamide	Polyamide
Silicone-free	Yes	Yes
Solid connection cross section	0.32 – 2.5 mm <sup>2</sup>	0.32 – 2.5 mm <sup>2</sup>
Connection cross-section AWG single stranded	22 AWG ... 14 AWG	22 AWG ... 14 AWG
Finely stranded connection cross section	0.32 – 2.5 mm <sup>2</sup>	0.32 – 2.5 mm <sup>2</sup>

Technical Data		
Variant	Contact material: Silver-nickel	Contact material: Gold-plated
Mechanical Data		
Finely stranded connection cross-section AWG	22 AWG ... 14 AWG	22 AWG ... 14 AWG
Connection cross-section, finely stranded with core end sleeve	0.32 – 2.5 mm <sup>2</sup>	0.32 – 2.5 mm <sup>2</sup>
Connection cross-section AWG finely stranded with core end sleeve	22 AWG - 14 AWG	22 AWG - 14 AWG
Mounting / Installation		
Tightening torque	1.2 N · m	1.2 N · m
Tightening torque lbf in	10.62 lbf in	10.62 lbf in
Connection type	Screw terminal	Screw terminal


Technical Drawings – Subject to Alterations



Accessories



Figure	Description	Art. No.	Weight
Pushbutton BG001			
	Ø 39 mm Black Designation plate: Black, blank disc without text Front panel mounting Silicone-free: Yes	223691	34 g
	Ø 39 mm Black Designation plate: Black, blank disc without text Front panel mounting Silicone-free: No	223692	34 g
Mushroom pushbutton, black BG003			
	Ø 39 mm Black Designation plate: Black, blank disc without text Front panel mounting Silicone-free: Yes	244563	50 g
	Ø 39 mm Black Designation plate: Black, blank disc without text Front panel mounting Silicone-free: No	244564	50 g
Mushroom pushbutton, red BG004			
	Ø 39 mm Red/black Designation plate: Red, blank disc without text Front panel mounting Silicone-free: Yes	244565	50 g
	Ø 39 mm Red/black Designation plate: Red, blank disc without text Front panel mounting Silicone-free: No	244566	50 g

Accessories

Figure	Description	Art. No.	Weight
Mushroom stay-put button with key lock BG006			
	Ø 39 mm Red/black Closing: MS1 Front panel mounting Silicone-free: Yes	223695	75 g
	Ø 39 mm Red/black Closing: MS1 Front panel mounting Silicone-free: No	223696	75 g
	Ø 39 mm Red/black Closing: MS2 Front panel mounting Silicone-free: Yes	270409	75 g
	Ø 39 mm Red/black Closing: MS2 Front panel mounting Silicone-free: No	270412	75 g
	Ø 39 mm Red/black Closing: MS3 Front panel mounting Silicone-free: Yes	270410	75 g
	Ø 39 mm Red/black Closing: MS3 Front panel mounting Silicone-free: No	270413	75 g
	Ø 39 mm Red/black Closing: MS4 Front panel mounting Silicone-free: Yes	270411	75 g
	Ø 39 mm Red/black Closing: MS4 Front panel mounting Silicone-free: No	270414	75 g

Accessories			
Figure	Description	Art. No.	Weight
Key-operated switch actuator BG008			
	Ø 39 mm Black Closing: MS1 Number of switching positions: 2 Front panel mounting Switching function: Latching / Latching Silicone-free: No	244574	50 g
	Ø 39 mm Black Closing: MS1 Number of switching positions: 3 Front panel mounting Switching function: Latching / Latching / Latching Silicone-free: No	244633	50 g
	Ø 39 mm Black Closing: MS1 Number of switching positions: 2 Front panel mounting Switching function: Latching / Latching Silicone-free: Yes	244573	50 g
	Ø 39 mm Black Closing: MS2 Number of switching positions: 2 Front panel mounting Switching function: Latching / Latching Silicone-free: Yes	272935	60 g
	Ø 39 mm Black Closing: MS2 Number of switching positions: 2 Front panel mounting Switching function: Latching / Latching Silicone-free: No	270418	50 g
	Ø 39 mm Black Closing: MS3 Number of switching positions: 2 Front panel mounting Switching function: Latching / Latching Silicone-free: Yes	274089	50 g
	Ø 39 mm Black Closing: MS3 Number of switching positions: 2 Front panel mounting Switching function: Latching / Latching Silicone-free: No	270419	50 g
	Ø 39 mm Black Closing: MS4 Number of switching positions: 2 Front panel mounting Switching function: Latching / Latching Silicone-free: Yes	272936	60 g
	Ø 39 mm Black Closing: MS4 Number of switching positions: 2 Front panel mounting Switching function: Latching / Latching Silicone-free: No	270420	50 g

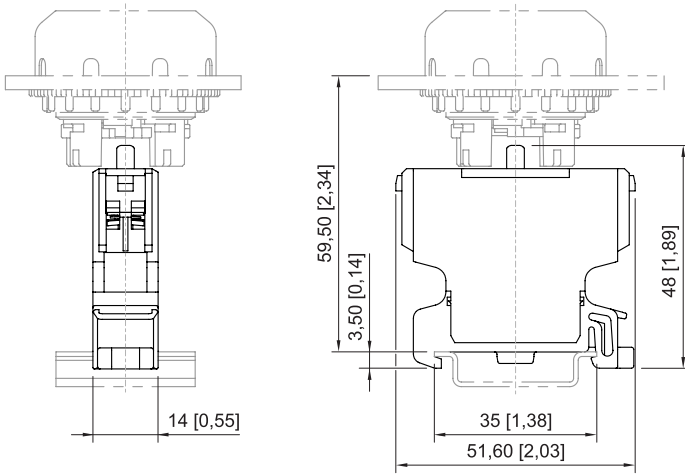
## Accessories

Figure	Description	Art. No.	Weight
<b>Key-operated switch actuator BG008</b>			
	Ø 39 mm Black Closing: MS1 Number of switching positions: 3 Front panel mounting Switching function: Latching / Latching / Latching Silicone-free: Yes	244632	50 g
	Ø 39 mm Black Closing: MS2 Number of switching positions: 3 Front panel mounting Switching function: Latching / Latching / Latching Silicone-free: Yes	274090	50 g
	Ø 39 mm Black Closing: MS2 Number of switching positions: 3 Front panel mounting Switching function: Latching / Latching / Latching Silicone-free: No	270421	50 g
	Ø 39 mm Black Closing: MS3 Number of switching positions: 3 Front panel mounting Switching function: Latching / Latching / Latching Silicone-free: Yes	274091	50 g
	Ø 39 mm Black Closing: MS3 Number of switching positions: 3 Front panel mounting Switching function: Latching / Latching / Latching Silicone-free: No	270422	50 g
	Ø 39 mm Black Closing: MS4 Number of switching positions: 3 Front panel mounting Switching function: Latching / Latching / Latching Silicone-free: Yes	274092	50 g
	Ø 39 mm Black Closing: MS4 Number of switching positions: 3 Front panel mounting Switching function: Latching / Latching / Latching Silicone-free: No	270423	50 g
	<b>Mushroom stay-put button with key lock, EM-STOP BG009</b>		
	Ø 39 mm Yellow/red Designation plate: With yellow backing plate Closing: MS1 Front panel mounting Silicone-free: Yes	223693	70 g
	Ø 39 mm Yellow/red Designation plate: With yellow backing plate Closing: MS1 Front panel mounting Silicone-free: No	223694	75 g

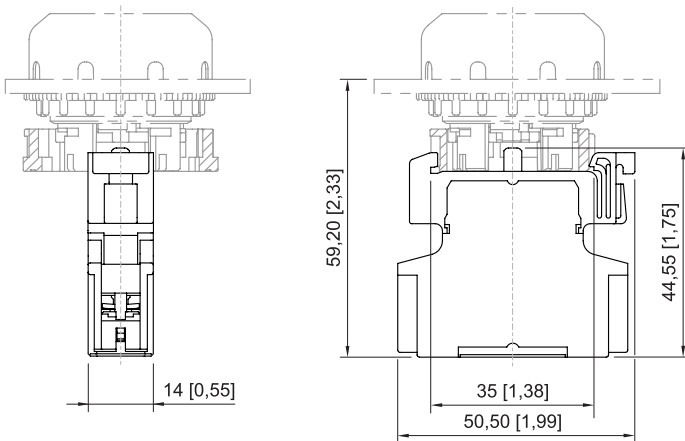
Accessories			
Figure	Description	Art. No.	Weight
<b>Mushroom stay-put button with key lock, EM-STOPY BG009</b>			
	Ø 39 mm Yellow/red Designation plate: With yellow backing plate Closing: MS2 Front panel mounting Silicone-free: Yes	274099	750 g
<b>Mushroom stay-put button with key lock, EM-STOP BG009</b>			
	Ø 39 mm Yellow/red Designation plate: With yellow backing plate Closing: MS2 Front panel mounting Silicone-free: No	270415	75 g
	Ø 39 mm Yellow/red Designation plate: With yellow backing plate Closing: MS3 Front panel mounting Silicone-free: Yes	274100	750 g
	Ø 39 mm Yellow/red Designation plate: With yellow backing plate Closing: MS3 Front panel mounting Silicone-free: No	270416	75 g
	Ø 39 mm Yellow/red Designation plate: With yellow backing plate Closing: MS4 Front panel mounting Silicone-free: Yes	274101	750 g
	Ø 39 mm Yellow/red Designation plate: With yellow backing plate Closing: MS4 Front panel mounting Silicone-free: No	270417	75 g
<b>Mushroom stay-put button EM-STOP BG010</b>			
	Ø 39 mm Yellow/red Designation plate: With yellow backing plate Front panel mounting Silicone-free: Yes	223697	50 g
	Ø 39 mm Yellow/red Designation plate: With yellow backing plate Front panel mounting Silicone-free: No	223698	50 g
<b>Mushroom stay-put button, black BG012</b>			
	Ø 39 mm Black Front panel mounting Silicone-free: Yes	223699	50 g
	Ø 39 mm Black Front panel mounting Silicone-free: No	223700	50 g

Accessories				
Figure	Description	Art. No.	Weight	
<b>Mushroom pushbutton, 55 mm, red BG014</b>				
	Ø 55 mm Black/red Designation plate: Red, blank disc without text Front panel mounting Silicone-free: Yes	244634	55 g	
	Ø 55 mm Black/red Designation plate: Red, blank disc without text Front panel mounting Silicone-free: No	244635	55 g	
<b>Mushroom stay-put button, 55 mm, EM-STOP BG015</b>				
	Ø 55 mm Yellow/red Designation plate: With yellow backing plate Front panel mounting Silicone-free: Yes	244636	55 g	
	Ø 55 mm Yellow/red Designation plate: With yellow backing plate Front panel mounting Silicone-free: No	244637	55 g	
<b>Twin pushbutton BG023</b>				
	Black Front panel mounting Silicone-free: Yes	244638	45 g	
	Black Front panel mounting Silicone-free: No	244639	45 g	
<b>Mushroom pushbutton, 55 mm, black BG703</b>				
	Ø 55 mm Black Designation plate: Black, blank disc without text Front panel mounting Silicone-free: Yes	244642	55 g	
	Ø 55 mm Black Designation plate: Black, blank disc without text Front panel mounting Silicone-free: No	244643	55 g	
<b>Small rotary actuator, not lockable BG726</b>				
	Ø 39 mm Black Designation plate: 0/OFF - I/ON Number of switching positions: 2 Lockable in: Not padlockable Front panel mounting Switching function: Latching / Latching Silicone-free: Yes	244646	40 g	
	Ø 39 mm Black Designation plate: 0/OFF - I/ON Number of switching positions: 2 Lockable in: Not padlockable Front panel mounting Switching function: Latching / Latching Silicone-free: No	244647	40 g	

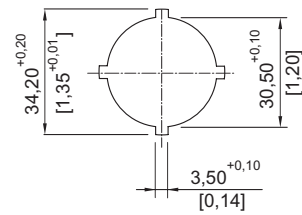
Accessories			
Figure	Description	Art. No.	Weight
Small rotary actuator, not lockable BG726			
	Ø 39 mm Black Designation plate: I - 0 - II Number of switching positions: 3 Lockable in: Not padlockable Front panel mounting Switching function: Latching / Latching / Latching Silicone-free: Yes	244648	40 g
	Ø 39 mm Black Designation plate: I - 0 - II Number of switching positions: 3 Lockable in: Not padlockable Front panel mounting Switching function: Latching / Latching / Latching Silicone-free: No	244649	40 g
Rotary actuator, small, lockable BG727			
	Ø 39 mm Black Designation plate: 0/OFF - I/ON Number of switching positions: 2 Lockable in: One pos. with one lock Front panel mounting Switching function: Latching / Latching Silicone-free: Yes	244650	40 g
	Ø 39 mm Black Designation plate: 0/OFF - I/ON Number of switching positions: 2 Lockable in: One pos. with one lock Front panel mounting Switching function: Latching / Latching Silicone-free: No	244651	40 g
	Ø 39 mm Black Designation plate: I - 0 - II Number of switching positions: 3 Lockable in: One pos. with one lock Front panel mounting Switching function: Latching / Latching / Latching Silicone-free: Yes	244652	40 g
	Ø 39 mm Black Designation plate: I - 0 - II Number of switching positions: 3 Lockable in: One pos. with one lock Front panel mounting Switching function: Latching / Latching / Latching Silicone-free: No	244653	40 g
Illuminated pushbutton (spring return) BG735			
	Ø 39 mm Black Front panel mounting All colours Silicone-free: Yes	244654	35 g
	Ø 39 mm Black Front panel mounting All colours Silicone-free: No	244655	35 g



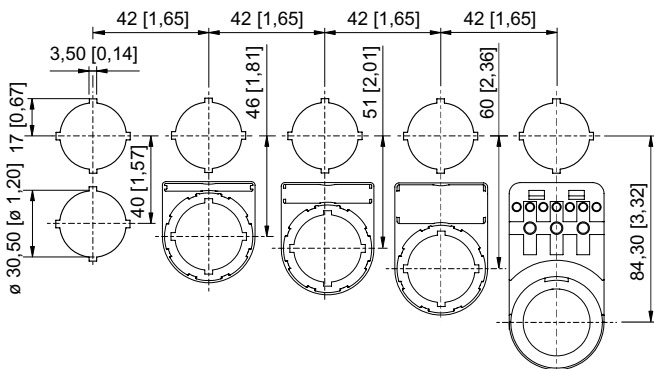
Contact element  
for installation on mounting rail



Contact element  
for front installation



Punch pattern



Cut-out with/without additional designation plate