

Lighting

Emergency luminaire With LED

GRP

L409/4348-5101-162-2220-22-850011 Art. No. 278305



- Long-lasting LED version of the EXLUX family in an industrial design
- Robust, durable enclosure with central lock for use as humid lighting
- Integrated, automatically started test function for the integrated battery
- Up to 3 hours battery runtime with a luminous flux of 1000 lm in emergency operation
- Available with warm white, neutral white and cold white colour temperatures

MY R. STAHL L409A

The EXLUX L409/4 light fitting completes the LED linear luminaire range. The industrial design of the emergency luminaires offers all the advantages of the robust enclosure technology and long-lasting LED technology for which the EXLUX range is known. This automatically starts all test functions set out as mandatory in standards and the ergonomic light fitting device provides clear signals. The entire range of installation material for the EXLUX family is also available.

Technical Data

Explosion Protection	
Ex version	Industrial design
Electrical Data	
Rated operational voltage AC	110 – 240 V
Battery version	NiCd battery, gas-tight
Battery operating voltage	6 V
Battery capacity	7 Ah
Self-test function	With (standard)
Frequency range	50 – 60 Hz
Lighting Data	
Number of lamps	1
Lamp wattage	45 W
Lamp	LED
Light colour	5000 K – neutral white
Light distribution	120°x120° with diffusing glass
Luminaire efficacy	129 lm/W
Luminous flux	5810 lm
Operating time	1.5 h emergency lighting operation
Emergency light output	35% – 1.5 h
Colour rendering	≥ 80
Colour temperature	5000 K
Ambient Conditions	
Ambient temperature	-30 °C ... +50 °C Note: Through wiring Max. 3x16 A -30 °C ... +55 °C Note: Through wiring 2 Max. 3x10 A
Mechanical Data	
Version	Standard
IP degree of protection (IEC 60598)	IP66/IP67

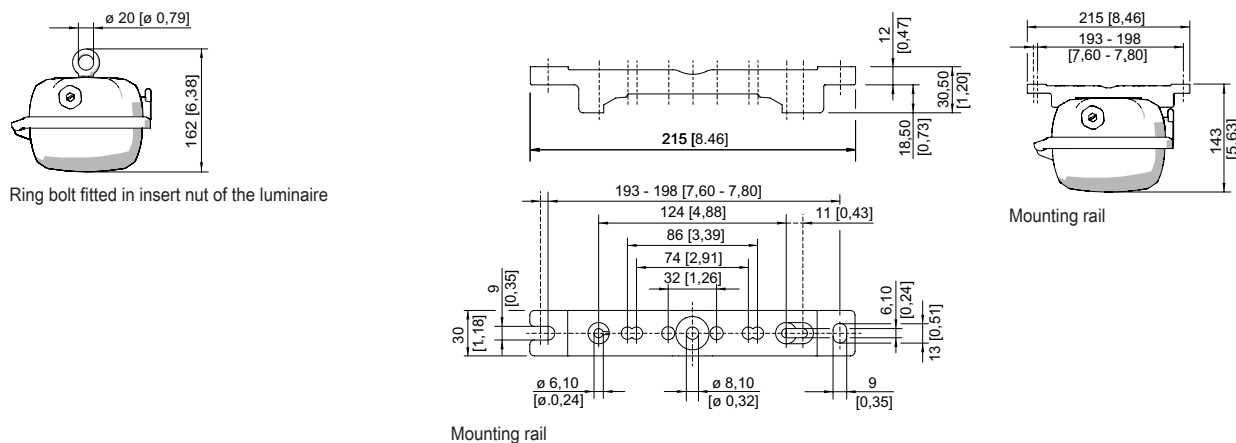
Mechanical Data

Enclosure material	Polyester resin, Glass fibre reinforced
Enclosure colour	Light grey (RAL 7035)
Diffuser	With diffuser
Sealing material	Silicone
Silicone-free content	Contains silicone
Translucent cover material	Polycarbonate
Installed terminal strip	PE + N + L1 + L2 + L3 + L'
Max. solid connection terminals	6 mm ²
Max. finely stranded connection terminals	4 mm ²
Type of connection cable	Finely stranded Solid
Size	4
Width	183.5 mm
Height	125 mm
Length	1467 mm
Impact strength (IEC 62262)	IK10
Weight	8.1 kg
Weight	17.86 lb
Disconnection of the luminaire	Only battery

Components

Threaded plate	2x SS430 stainless steel
Ballast	LED NLE 80W 110-240V/7Ah/1.5h/
Through wiring	With 6 conductors 2.5 mm ²
Drilled holes	3 x M20
Cable glands and entries	Can be ordered as accessories
Stopping plugs	Can be ordered as accessories
Accessories	without

Dimensional Drawings (All Dimensions in mm [inches]) – Subject to Alterations

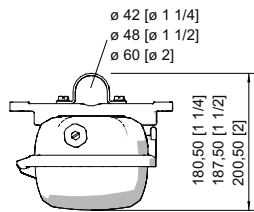


Lighting

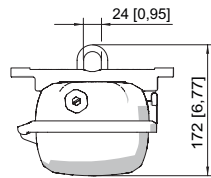
Emergency luminaire With LED

GRP

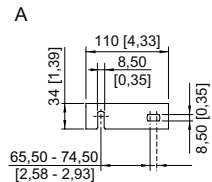
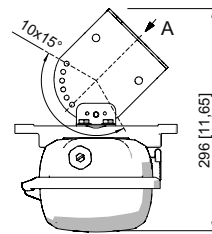
L409/4348-5101-162-2220-22-850011 Art. No. 278305



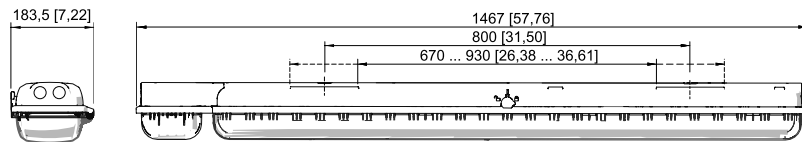
Pipe clamp fitted in mounting rail



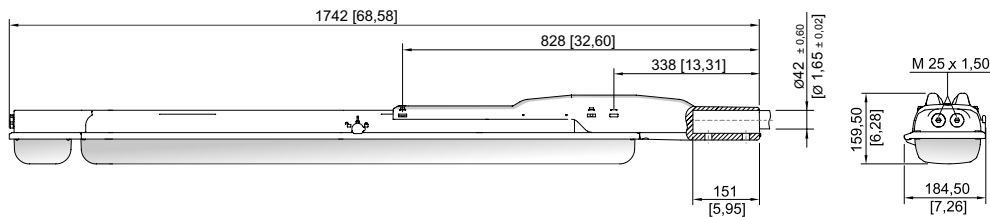
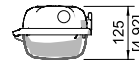
Mounting bracket fitted in mounting rail



Wall mounting bracket fitted in mounting rail

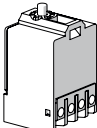
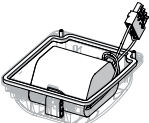


Size 4



Size 4

Spare Parts

Contact element		Art. No.
	8080/1-3-L 2 NC contact element	132527
Battery set		Art. No.
	Battery cover with built-in battery. Gas-tight NiCd battery; 7 Ah / 6 V	223532

We reserve the right to make alterations to the technical data, dimensions, weights, designs and products available without notice. The illustrations cannot be considered binding.