

## Remote I/O

# IS1 RIO standard enclosure Zone 2 With shield bus and power terminals

7145/54-0400-0750-0300 Art. No. 282643



- Short delivery times
- Can be used in Zone 2 without acceptance or certification
- Prefabricated and ready for use with entries, bus rails, connection terminals, etc.
- Modifications, add-ons and customer-specific adaptations possible

WebCode 7145F



With the IS1+ standard enclosures for Zone 2, we offer you a variety of prefabricated field enclosures made from stainless steel 1.4301 (V2A). They include all entries, bus rails, cable ducts and connection terminals for auxiliary power. Once the IS1+ components (available separately) have been installed, the enclosures can be used in Zone 2 without acceptance, and they fulfil the requirements of EN 61439.

## Technical Data

### Explosion Protection

Application range (zones)	2
IECEX gas certificate	IECEX TUR 15.0027
IECEX gas explosion protection	Ex ec ia ib [ia Ga, ib] IIC T4 Gc
ATEX gas certificate	TÜV 18 ATEX 8178
ATEX gas explosion protection	Ex II 3 (1) G Ex ec ia ib [ia Ga, ib] IIC T4 Gc
Certificates	ATEX (TUR), IECEX (TUR)
Installation	Zone 2
Further information	Refer to operating instructions and certificates of enclosures and IS1+ modules.

### Electrical Data

Applicable IS1+ CPM modules	9440/15-01-11-C1198 (Modbus RTU)
Applicable IS1+ CPU modules	9442/35-10-00 (multi-protocol: PROFIBUS DP V1 HART, PROFIBUS DP V1 HART für PNO redundancy, Modbus TCP, PROFINET, EtherNet/IP)
Applicable IS1+ CPU modules note	CPU together with 9445/35 power module and 9496/35 socket
Usable IS1+ power modules	9445/35
Usable IS1+ base	9496/35-04
Usable IS1+ I/O modules	9470/33 9475/33 9482/33 9469/35 9471/35 9472/35 9477/15 9468/33
Applicable IS1+ modules note	Installation of the IS1+ modules must be performed in accordance with the corresponding operating instructions of the modules.

### Auxiliary Power

Auxiliary power rated operating voltage	24 V DC (20 to 35 V DC)
Auxiliary power nominal current	Max. 4 A @ 24 V DC

# Remote I/O

## IS1 RIO standard enclosure Zone 2 With shield bus and power terminals

7145/54-0400-0750-0300 Art. No. 282643



### Auxiliary Power

Auxiliary power rated current	Depending on installed modules IS1+ (see corresponding data sheet)
-------------------------------	--

### Device Specific Data

Max. number of analogue I/O signals	40
Max. number of digital I/O signals	80
Max. internal power dissipation	52 W
IS1+ BusRail	1 x BusRail for 6 slots
Shield bus	2 x KLBÜ 3...8 30 x AK4
Front door	1 x opening upwards 3 x cam lock 1 x right cover support

### Ambient Conditions

Ambient temperature	-40°C ... +55°C
Ambient temperature	-40°F ... +122°F
Storage temperature	-40°C ... +80°C
Storage temperature	-40°F ... +176°F
Note	Refer to the technical data in the corresponding data sheets of the IS1+ modules

### Mechanical Data

Connection auxiliary power	Screw connector 0.2 to 10 mm <sup>2</sup> (4 x UT6; 2 x UT6-PE)
PE connection version	External M8 PE connection
PE connection clamping range	10 – 25 mm <sup>2</sup>
IP degree of protection (IEC 60529)	IP65
Enclosure material	Stainless steel 1.4301, (V2A, AISI 304) Brush finished
Sealing material	Silicone foam gasket
Silicone-free	No
Wall thickness	2 mm
Connection cross-section	0.2 to 10 mm <sup>2</sup>
Dimensions (WxHxD)	400 mm x 750 mm x 300 mm
Width	400 mm
Width, inches	15.75 in
Height	750 mm
Height, inches	29.53 in
Depth	300 mm
Depth, inches	11.81 in
Weight	25 kg
Weight	55.12 lb

### Mounting / Installation

Mounting orientation	Horizontal Vertical
Connection type	Screw connector

### Components

Built-in unit 1	1 x BusRail for 6 slots (1 x CPM, 5 x I/O – modules)
-----------------	---

# Remote I/O

IS1 RIO standard enclosure Zone 2 With shield bus  
and power terminals

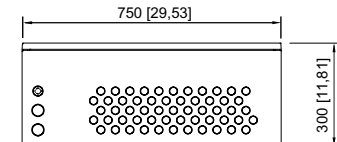
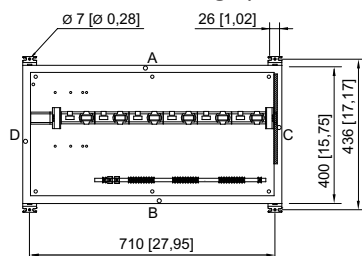
7145/54-0400-0750-0300 Art. No. 282643



## Components

Auxiliary power cable entries	2 x Black cable gland Polyamide, type 8161/7 M32 Ø 9 ... 21 mm
Cable entries signals	60 x Black cable gland Polyamide, type 8161/7 M20 Ø 4 ... 13 mm
Breather	1 x Breather, green, Polyamide, type 8162 M25 x 1,5
Type of terminals 1	4 x UT6
Type of terminals PE 1	2 x UT6-PE
Earth rail	Zinc galvanised (not insulated) 10 x 3 (1x)

## Dimensional Drawings (All Dimensions in mm [inches]) – Subject to Alterations



1 x BusRail for 6 slots

Art. No. 282643

We reserve the right to make alterations to the technical data, dimensions, weights, designs and products available without notice. The illustrations cannot be considered binding.