

CMP-757-D-T3-5 Art. No. 109640



- Metal Ex d and Ex e stopping plugs
- Wide selection of thread types and sizes
- Operating temperature range -60 °C to +200 °C
- Global certification, IECEx, ATEX, cCSAus and UL

MY R. STAHL 757DA



Series 757 metal Ex d and Ex e stopping plugs with hexagon insert bit and head make it possible to temporarily or permanently seal unused drilled holes. There is a wide selection of different thread sizes and types available for this. They have global certification according to IECEx, ATEX, UL and cCSAus.

Technical Data

Explosion Protection

Application range (zones)	1, 2, 20, 21, 22
IECEX gas certificate	IECEX CML 18.0177X
IECEX gas explosion protection	Ex db IIC Gb
IECEX firedamp protection	Ex db I Mb
IECEX firedamp protection 2	Ex eb I Mb
ATEX gas explosion protection	⊕ II 2 G Ex db IIC Gb
ATEX firedamp protection	⊕ I M2 Ex db I Mb
ATEX firedamp protection 2	⊕ I M2 Ex eb I Mb
Notes	The product certificates can be downloaded from the manufacturer's homepage (www.cmp-products.com)

Ambient Conditions

Ambient temperature	-60 °C ... +200 °C
---------------------	--------------------

Mechanical Data

Degree of protection (IP)	IP66
Degree of protection note	IP67 and IP68 mounting according to the specifications of the manufacturer, CMP. The specified degrees of protection are only fulfilled if CMP installation accessories are used.
Degree of protection (IP) UL	IP66
Material	Nickel-plated brass
Silicone-free	Yes
Drive	External hexagon
Width across corners	41.4 mm
Width across flats	37.6 mm
Outer diameter	41.4 mm
Thread size	NPT1
Thread length	25 mm
Thread pitch	2,2087
Impact strength (IEC 62262)	IK10

Installation equipment and accessories

Stopping plug With hex head

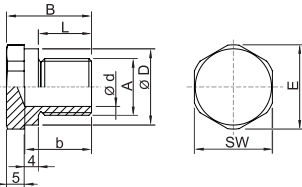


CMP-757-D-T3-5 Art. No. 109640

Mechanical Data

Packaging unit	1
Weight	144 g
Weight	0.32 lb

Dimensional Drawings (All Dimensions in mm [inches]) – Subject to Alterations



- A = Thread size
- B = Length
- L = Thread length
- D = Outer diameter
- b = Dimension b
- d = Dimension d
- E = Width across corners
- SW = Hexagon socket width across flats

We reserve the right to make alterations to the technical data, dimensions, weights, designs and products available without notice. The illustrations cannot be considered binding.