

Control Devices

Control device for panel mounting

Ex e

8003/111-005 UL Art. No. 127141



- Flexible configuration due to pushbutton, mushroom push-button, mushroom stay-put button, mushroom stay-put button with key lock, key-operated button, key-operated switch
- Easy assembly thanks to single-hole mounting
- Codable "latching", "spring return", "key not removable" functions
- Spring clamp terminals with connection chamber

MY R. STAHL 8003A



The switches and control buttons for R. STAHL series 8003 panel mounting devices have various switching functions in latching and spring return versions, which can be subsequently recoded, up to 6 A. They are completely certified, explosion-protected equipment with Ex e connection chambers. With the patented mounting mechanism, panel mounting with normal drilled holes of 30.5 mm is quick and easy.

The right actuators are available for a comprehensive range of applications.

Technical Data

Explosion Protection

| | |
|---------------------------------|---|
| Scope of validity | European Union (ATEX) CEC IECEX NEC |
| Application range (zones) | 1 2 21 22 |
| IECEX gas certificate | IECEX PTB 06.0065X |
| IECEX gas explosion protection | Ex db eb IIC T6 Gb |
| IECEX dust certificate | IECEX PTB 06.0065X |
| IECEX dust explosion protection | Ex tb IIIC T80 °C Db |
| ATEX gas certificate | PTB 02 ATEX 1057 X |
| ATEX gas explosion protection | ⊕ II 2 G Ex db eb IIC T6 Gb |
| ATEX dust certificate | PTB 02 ATEX 1057 X |
| ATEX dust explosion protection | ⊕ II 2 D Ex tb IIIC T80 °C Db |
| Certificates | ATEX (PTB), Canada (UL), IECEX (PTB), Korea (KGS), USA (UL) |
| Declaration of Conformity | ATEX (EUK), ATEX (Simple apparatus), China (CCC), Declaration of Conformity (ATEX) |
| Notes | Product label may vary. Series devices have certification according to ATEX, IECEX, NEC® and CE Code. |

Electrical Data

| | |
|------------------------------|----------------------------|
| Rated operational voltage AC | 500 V |
| Rated operational current | 6 A |
| Switching capacity AC-12 | 500 V / 6 A / max. 3000 VA |
| Switching capacity AC-15 | 400 V / 6 A / max. 1250 VA |
| Switching capacity DC-13 | 110 V / 1 A / max. 110 W |

Control Devices

Control device for panel mounting

Ex e

8003/111-005 UL Art. No. 127141



Electrical Data

| | |
|---|----------|
| Switching capacity DC-13<SoftReturn/>2 contact elements in series | 60 V/6 A |
|---|----------|

Ambient Conditions

| | |
|--------------------------|--------------------|
| Ambient temperature | -20 °C ... +60 °C |
| Ambient temperature | -4 °F ... +140 °F |
| Ambient temperature NEC® | -30 °C ... +60 °C |
| Ambient temperature NEC® | -22 °F ... +140 °F |

Mechanical Data

| | |
|---------------------------------------|------------------------------------|
| Degree of protection (IP) (IEC 60529) | Reverse side IP65, front side IP65 |
| Enclosure material | Polyamide |
| Contact material | Silver-nickel |
| Silicone-free | Yes |
| Number of NCs | 1 |
| Number of NOs | 1 |
| Number of switching positions | 2 |
| Connection cross-section | 0.75 ... 1.5 mm ² |
| Connection cross-section AWG | 18 AWG ... 12 AWG |
| Depth of cut-out | 130 mm |
| Mounting depth, inches | 5.12 in |
| Service life, min. | 10 ⁵ operating cycles |
| Weight | 125 g |
| Weight | 0.28 lb |

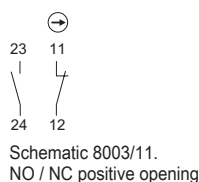
Mounting / Installation

| | |
|--------------------------|--------------|
| Tightening torque | 3 Nm |
| Tightening torque lbf in | 26.55 lbf in |

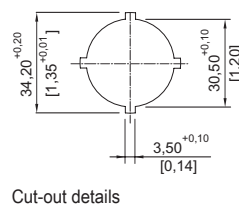
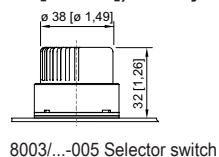
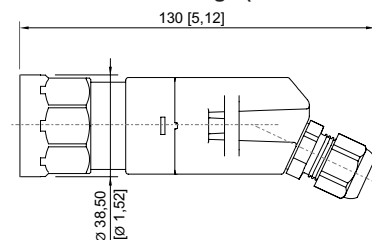
Components

| | |
|--------------|------------------------------|
| Actuator | Selector switch |
| Entry 1 | 8161/7-M16-0902 |
| Entry 1 type | Polyamide cable gland, black |

Technical Drawings – Subject to Alterations



Dimensional Drawings (All Dimensions in mm [inches]) – Subject to Alterations

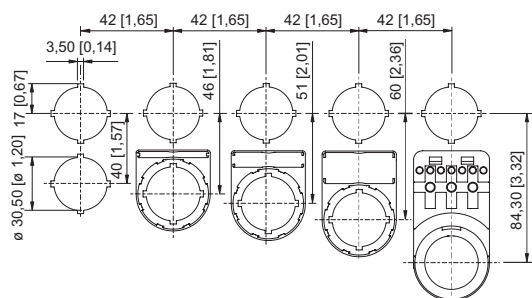


Control Devices

Control device for panel mounting

Ex e

8003/111-005 UL Art. No. 127141



Cut-out with/without additional designation plate

Spare Parts

Locking devices

| | | Art. No. |
|--|---|----------|
| | 8602A0753 H24 for not actuated pushbutton/selector switch BG001, BG005 | 155372 |
| | 8602A0754 for actuated pushbutton/selector switch BG001, BG005 | 155402 |
| | 8602A0755 for not actuated pushbutton/selector switch BG001, BG005 | 155431 |
| | 8602A0757 for selector switch BG005 | 155460 |

Protective collar

| | | Art. No. |
|--|---|----------|
| | 8602A0751 metal for pushbutton/selector switch/mushroom stay-put button with key lock/mushroom stay-put button/mushroom pushbutton dia. 39 BG001, BG003, BG005, BG008, BG009, BG010, BG012 | 155326 |

Label mount

| | | Art. No. |
|--|--|----------|
| | Label mount, size 1, without symbol label Text: 1 line for actuators to fit Ø 30.5 mm holes | 155632 |
| | Label mount, size 2, without symbol label Text: 1 or 2 lines for actuators to fit Ø 30.5 mm holes | 155687 |
| | Label mount, size 3, without symbol label Text: 1, 2 or 3 lines for actuators to fit Ø 30.5 mm holes | 155844 |

Control Devices

Control device for panel mounting

Ex e

8003/111-005 UL Art. No. 127141



Symbol label for pushbutton and selector switch

Art. No.



Colour: red
Symbol: Arrow

155567

Insert discs for label holder

Art. No.



One-line
Plain
Material: PVC
Colour: White
Self-adhesive

238271



Two-line
Plain
Material: PVC
Colour: White
Self-adhesive

238272



Three-line
Plain
Material: PVC
Colour: White
Self-adhesive

238273

Closing part

Art. No.



8602C3-733-B
for closing unused holes in cover, dia. 30.5 mm, NBR

244306

8602C3-733-S
for closing unused holes in cover, dia. 30.5 mm, silicone

244307

We reserve the right to make alterations to the technical data, dimensions, weights, designs and products available without notice. The illustrations cannot be considered binding.