

8008/2-051 Art. No. 128516



- 2-, 3- or 4-pole control switch: 3-pole load disconnect switch with one auxiliary contact
- Suitable for EMERGENCY STOP functions (according to IEC/EN 60204, DIN VDE 0113)
- Latching and spring return positions possible

MY R. STAHL 8008A



R. STAHL Series 8008 control switches are available as 2-, 3- or 4-pole control switches or 3-pole load disconnect switches with one auxiliary contact. Their positive opening NC contacts also make them suitable for EMERGENCY STOP functions. You can choose the switching function and perform it in the latching or spring return position.

### Technical Data

#### Explosion Protection

Application range (zones)	1, 2
IECEX gas certificate	IECEX PTB 06.0010 U
IECEX gas explosion protection	Ex db eb IIC T6
ATEX gas certificate	PTB 00 ATEX 1111 U
ATEX gas explosion protection	Ex II 2 G Ex db eb IIC T6
Certificates	ATEX (PTB), Canada / USA (UL), Canada (FM), China (CQST), IECEX (PTB), Korea (KTL), USA (FM)

#### Electrical Data

AC rated operational voltage	690 V
DC rated operational voltage	230 V
Rated operational voltage AC UL	600 V
Rated operational current for AC	16 A
Rated operational current for DC	0.4 A
Rated operational current UL	10 A
No. of poles	2
Switching angle	45 °

#### Mechanical Data

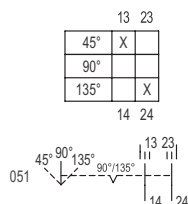
Degree of protection (IP) (IEC 60529)	IP00
Enclosure material	Epoxy resin
Contact material	Silver-nickel
Connection cross-section	2.5 mm <sup>2</sup>
Number of switching positions	3
Assembly for switching arrangement	051
Weight	128 g

#### Mounting / Installation

Tightening torque	1.8 N · m
-------------------	-----------

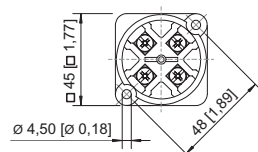
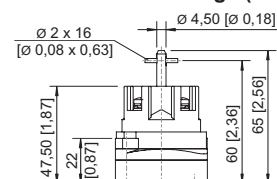
8008/2-051 Art. No. 128516

### Technical Drawings – Subject to Alterations



Switching arrangement 8008/-051

### Dimensional Drawings (All Dimensions in mm [inches]) – Subject to Alterations



8008/2-0 1- or 2-pole control switch

## Accessories

### Rotary actuator, small, lockable

		Art. No.
	Ø39, can be locked with one lock, 45° position with standard seal for up to -20 °C	227391
	Ø39, can be locked with one lock, 90° position with standard seal for up to -20 °C	227359
	Diameter 39 mm, lockable using 1 lock, 45° position Seal: Silicone, up to -60 °	227392

### Rotary actuator, small, lockable

#### ASSY734

		Art. No.
	Diameter 39 mm, lockable using 1 lock, 90° position Seal: Silicone, up to -60 °	227360

We reserve the right to make alterations to the technical data, dimensions, weights, designs and products available without notice. The illustrations cannot be considered binding.