

Control and signalling devices

Disconnect terminal For mounting rail mounting



Ex e

8082/1-1-01 Art. No. 132650



- 1-pole, positive opening NC contact
- For installation in Ex e enclosures
- Clear position indication
- Actuator can be locked in the zero position
- For latching or screw fastening using adaptor
- Connection cross-section: 0.75 to 2.5 mm², solid/finely stranded
- Enclosure made of polyamide

MY R. STAHL 8082B

Series 8082 disconnect terminals can be used to disconnect electrical circuits for maintenance and test purposes.

The disconnect terminals are used in Ex e enclosures and may also be actuated in hazardous areas while live.

When the contact is open, the supply line clamping unit is covered.

The actuator can be locked with a padlock in the zero position according to IEC/EN 60947-5-1.

Using special DIN rails which are available as accessories, the devices can be arranged next to each other to form blocks.

Technical Data

Explosion Protection

Application range (zones)	1 2
IECEX gas certificate	IECEX PTB 06.0011U
IECEX gas explosion protection	Ex db eb IIC T6 Gb
IECEX firedamp certificate	IECEX PTB 06.0011U
IECEX firedamp protection	Ex db eb I Mb
ATEX gas certificate	PTB 00 ATEX 1031 U
ATEX gas explosion protection	Ex II 2 G Ex db eb IIC T6 Gb
ATEX firedamp certificate	PTB 00 ATEX 1031 U
ATEX firedamp protection	Ex I M2 Ex db eb I Mb
UL gas certificate	E182378V1S1
Inmetro gas certificate	ULBR130645U
Certificates	ATEX (PTB), Brazil (ULB), Canada / USA (UL), Canada (UL), China (CQST), IECEX (PTB), Korea (KTL), SIL (exida)

Functional Safety

SIL-capable	without actuators or with actuators 8602/3-006, 8602/3-009, 8602/3-010, 8602/3-012
-------------	--

Electrical Data

Max. rated operational voltage	550 V
Min. rated operational voltage	24 V
AC UL rated operational voltage	600 V
UL rated operational current	600 A
Electrical service life	10 ⁶ operating cycles
Mechanical service life	10 ⁴ operating cycles

Control and signalling devices

Disconnect terminal For mounting rail mounting



Ex e

8082/1-1-01 Art. No. 132650

Electrical Data

Switching capacity AC-12	250 V / 10 A 400 V / 7.5 A 550 V / 5 A
Switching capacity AC-15	110 V / 10 A 250 V / 6 A 400 V / 4 A
Switching capacity DC-13	60 V / 6 A
Switching capacity DC-13<SoftReturn/>2 contact elements in series	230 V/1 A 110 V/2.5 A

Ambient Conditions

Ambient temperature	-60 °C ... +70 °C
---------------------	-------------------

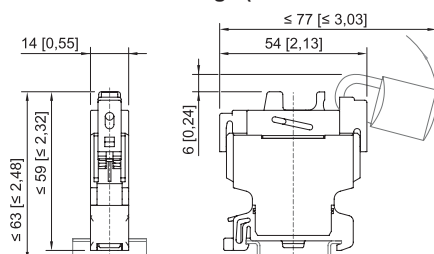
Mechanical Data

Degree of protection (IP) (IEC 60529)	IP20
Enclosure material	Polyamide
Contact material	Silver-nickel
Silicone-free	Yes
Connection cross-section	2.5 mm ²
Solid connection cross section	0.75 – 2.5 mm ²
Finely stranded connection cross section	0.75 – 2.5 mm ²
Connection cross-section, finely stranded with core end sleeve	0.75 – 2.5 mm ²
Number of NCs	1
Contacts	1 NC
Packaging unit	1
Weight	30 g
Weight	0.066 lb

Mounting / Installation

Tightening torque	1.2 Nm
Tightening torque lbf in	10.62 lbf in
Connection type	Screw terminal
Max. USA solid connection terminals	14 AWG

Dimensional Drawings (All Dimensions in mm [inches]) – Subject to Alterations



We reserve the right to make alterations to the technical data, dimensions, weights, designs and products available without notice. The illustrations cannot be considered binding.