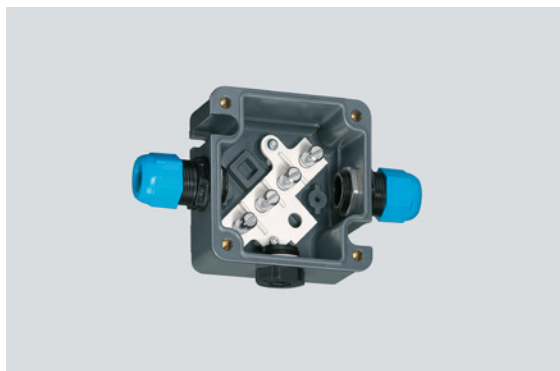


8118/211-401 Art. No. 133084



- Resistant Ex e enclosure, universally usable as connection or junction boxes and/or to safeguard electric distributors up to 6.3 A
- IP66 degree of protection
- With mantle terminals or with a combination of mantle terminals and miniature fuses (optional)

MY R. STAHL 8118A



R. STAHL Series 8118 junction boxes are equipped with 4, 5 or 8 mantle terminals depending on their design size. As an option, miniature fuses can still be installed in addition. Junction boxes are therefore also suitable for safeguarding. The robust enclosure made from glass fibre reinforced polyester resin can be equipped with plastic or metal cable glands.

### Technical Data

#### Explosion Protection

|                                 |  |
|---------------------------------|--|
| Scope of validity               | European Union (ATEX)<br>IECEX                                     |
| Application range (zones)       | 1<br>2<br>21<br>22   |
| IECEX gas certificate           | IECEX PTB 06.0026  |
| IECEX gas explosion protection  | Ex ia ib IIC T6 Gb   |
| IECEX dust certificate          | IECEX PTB 06.0026  |
| IECEX dust explosion protection | Ex tb IIIC T80 °C Db   |
| ATEX gas certificate            | PTB 99 ATEX 3103   |
| ATEX gas explosion protection   | ⊕ II 2 G Ex ia ib IIC T6 Gb  |
| ATEX dust certificate           | PTB 99 ATEX 3103   |
| ATEX dust explosion protection  | ⊕ II 2 D Ex tb IIIC T80 °C Db                                      |
| Certificates                    | ATEX (PTB), Brazil (ULB), China (NEPSI), IECEX (PTB), India (PESO) |
| Declaration of Conformity       | China (CCC)  |
| Explosion protection note       | For product label, see scope of validity.                          |

#### Electrical Data

|   |   |
|---|---|
| Rated operational voltage AC                                    | 0 ... 60 V  |
| Rated operational voltage AC                                    | 60 V  |
| Permissible rated operational current with 5 loaded terminals   | For conductor cross-section of 1.5 mm <sup>2</sup> : 13 A<br>For conductor cross-section of 2.5 mm <sup>2</sup> : 18 A<br>For conductor cross-section of 4 mm <sup>2</sup> : 24 A |
| Permissible rated operational current with 4 loaded terminals   | For conductor cross-section of 1.5 mm <sup>2</sup> : 15 A<br>For conductor cross-section of 2.5 mm <sup>2</sup> : 19 A<br>For conductor cross-section of 4 mm <sup>2</sup> : 25 A |
| Permissible rated operational current with ≤ 3 loaded terminals | For conductor cross-section of 1.5 mm <sup>2</sup> : 16 A<br>For conductor cross-section of 2.5 mm <sup>2</sup> : 20 A<br>For conductor cross-section of 4 mm <sup>2</sup> : 25 A |

8118/211-401 Art. No. 133084

### Ambient Conditions

|                     |                        |
|---------------------|------------------------|
| Ambient temperature | -40 °C ... +75 °C (T6) |
| Ambient temperature | -40°F ... +167°F (T6)  |

### Mechanical Data

|   |  |
|---|--|
| Degree of protection IP (IEC 60529)   | IP66   |
| Enclosure material  | Polyester resin, Glass fibre reinforced  |
| Enclosure colour  | Dark grey  |
| Flammability according to   | IEC/EN 60695<br>UL 94<br>ASTM D635   |
| Silicone-free   | No   |
| Permissible number of conductors per clamping unit, solid   | Mantle terminal, M7 x 0.75<br>Conductor cross-section 1.5 mm <sup>2</sup> : Number of conductors min. 2, max. 4<br>Conductor cross-section 2.5 mm <sup>2</sup> : Number of conductors min. 2, max. 2 |
| Permissible number of conductors per clamping unit, finely stranded prepared, core end sleeve crimped | Mantle terminal M7 x 0.75<br>Conductor cross-section 1.5 mm <sup>2</sup> : Number of conductors min. 2, max. 3<br>Conductor cross-section 2.5 mm <sup>2</sup> : Number of conductors min. 2, max. 2  |
| Permissible number of conductors per clamping unit, finely stranded unprepared                        | Mantle terminal, M7 x 0.75<br>Conductor cross-section 1.5 mm <sup>2</sup> : Number of conductors min. 2, max. 3<br>Conductor cross-section 2.5 mm <sup>2</sup> : Number of conductors min. 2, max. 2 |
| Permissible number of conductors per clamping unit note   | All conductors of a terminal must have the same cross section and be made of the same material.  |
| Cover   | Screw-on cover   |
| Cover fixing type   | M4 stainless steel screws, With captive screws   |
| Width   | 85 mm  |
| Width, inches   | 3.35 in  |
| Height  | 85 mm  |
| Height, inches  | 3.35 in  |
| Depth   | 55 mm  |
| Depth, inches   | 2.17 in  |
| Packaging unit  | 1  |
| Weight  | 280 g  |
| Weight  | 0.62 lb  |

### Mounting / Installation

|   |             |
|---|-------------|
| Tightening torque of cover screw 1        | 1.4 Nm      |
| Tightening torque of cover screw 1 lbf in | 12.4 lbf in |

### Components

|                              |  |
|------------------------------|--|
| Entry 1                      | 2 x 8161/8-M20-1304<br>(Provided separately) |
| Entry 1 type                 | Polyamide cable gland, blue                  |
| Entry 1                      | M20 x 1.5                                    |
| Entry 1 terminal area        | 4-13 mm                                      |
| Entry 1 clamping range, inch | 0.16-0.51 in                                 |
| Metal entry possible 1       | No   |
| Entry 2                      | 1 x 8290/3-M20<br>(Provided separately)      |
| Entry 2 type                 | Polyamide stopping plug                      |
| Entry 2                      | M20 x 1.5                                    |

8118/211-401 Art. No. 133084

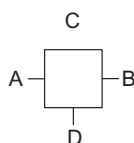
### Components

|                                   |  |
|-----------------------------------|--|
| Metal entry possible 2            | No                                       |
| Entries installation options/side | Size 1: 3x M20 (A+B+D)                   |
| Type of terminals 1               | 4 x Mantle terminal<br>4 mm <sup>2</sup> |

### Technical Drawings – Subject to Alterations

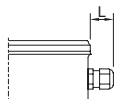
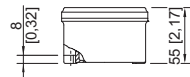


Four terminals

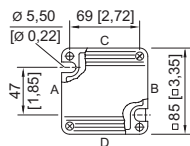


"—" = marking for mounting options

### Dimensional Drawings (All Dimensions in mm [inches]) – Subject to Alterations



Length L  
 Projection dimension for cable gland of Series 8161:  
 For M20: 25 to 31 [0.98 to 1.22]  
 For M25: 27 to 33 [1.06 to 1.3]  
 For M32: 32 to 39 [1.26 to 1.54]  
 Projection dimension for cable gland with strain relief of Series HSK-K-MZ  
 For M25: 41 [1.61]



8118/1.  
Enclosure SZ 1

### Accessories

#### Plastic cable gland



8161/8-M20-1304, Ex i  
 Plastic, M20 x 1.5, cable outer diameter 4 to 13 mm  
 Lot size 50 pieces

Art. No.

239164

#### Stopping plug



8290/3-M20  
 Plastic, M20 x 1.5  
 Lot size 100 pieces

Art. No.

285773

#### Brass plate with thread



8118 SZ 1, plate 37 x 30 mm [1.46 x 1.18 inch]  
 1 x M20 x 1.5 with M4 PE connection (left)  
 Can be installed in enclosures of SZ 1, SZ 2 and SZ 3

Art. No.

168913



8118 SZ 1, plate 37 x 30 mm [1.46 x 1.18 inch]  
 1 x M20 x 1.5 with M4 PE connection (right)  
 Can be installed in enclosures of SZ 1, SZ 2 and SZ 3

Art. No.

168914

We reserve the right to make alterations to the technical data, dimensions, weights, designs and products available without notice. The illustrations cannot be considered binding.