

8171/PE-50 Art. No. 139192



- Means of supplying power to lead-in for Ex d enclosures
- Sealed to prevent propagation of flame on explosion and insulated from wall
- Versions with: split post connection, clamp connection, soldered connection
- For voltages up to max. 1000 V and currents up to max. 630 A

MY R. STAHL 8171A



The bushings are permitted to be used as current feeders in enclosures with type of protection "flameproof".

They are fitted puncture-proof and insulated into the enclosure wall.

Duct bolt is located in the middle of a ring nut and the parts are bonded with a high-quality, track resistant insulating material (epoxy resin) to form an inseparable unit.

For the connection points in the Ex e enclosure increased creepage paths and air gaps according to IEC/EN 60079-7 are valid.

The bushings have to be secured against self-loosening.

Technical Data

Explosion Protection

Ex version	Yes
Application range (zones)	1 2
IECEX gas certificate	IECEX PTB 06.0080U
IECEX gas explosion protection	Ex de IIC Gb
ATEX gas certificate	PTB 00 ATEX 1066 U
ATEX gas explosion protection	Ⓔ II 2 G Ex de IIC Gb
Certificates	ATEX (PTB), China (CQST), IECEX (PTB)

Ambient Conditions

Ambient temperature	-55 °C ... +130 °C
---------------------	--------------------

Mechanical Data

Feedthrough bolt material	Brass
Moulding material	Epoxy resin
Ex d connection terminal	Threaded connection
Ex e connection terminal	Threaded connection
Connection cross-section	50 mm ²
Number of bolts	1
Width across flats	SW41
Thread size	M33
Thread pitch	1,5
Weight	200 g
Weight	0.44 lb

Mounting / Installation

Tightening torque	50 Nm
-------------------	-------

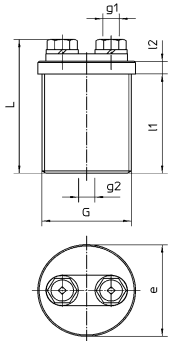
Installation Equipment and Accessories

Post-type bushing



8171/PE-50 Art. No. 139192

Dimensional Drawings (All Dimensions in mm [inches]) – Subject to Alterations



8171/PE-50

We reserve the right to make alterations to the technical data, dimensions, weights, designs and products available without notice. The illustrations cannot be considered binding.