

# Control and signalling devices

Disconnect terminal For mounting rail mounting

With gold-plated contacts

8082/1-1-11 Art. No. 201345



- 1-pole, positive opening NC contact
- For installation in Ex e enclosures
- Clear position indication
- Actuator can be locked in the zero position
- For latching or screw fastening using adaptor
- Connection cross-section: 0.75 to 2.5 mm<sup>2</sup>, solid/finely stranded
- Enclosure made of polyamide

## MY R. STAHL 8082B

Series 8082 disconnect terminals can be used to disconnect electrical circuits for maintenance and test purposes.

The disconnect terminals are used in Ex e enclosures and may also be actuated in hazardous areas while live.

When the contact is open, the supply line clamping unit is covered.

The actuator can be locked with a padlock in the zero position according to IEC/EN 60947-5-1.

Using special DIN rails which are available as accessories, the devices can be arranged next to each other to form blocks.

## Technical Data

### Explosion Protection

Application range (zones)	1 2
IECEX gas certificate	IECEX PTB 06.0011U
IECEX gas explosion protection	Ex db eb IIC T6 Gb
IECEX firedamp certificate	IECEX PTB 06.0011U
IECEX firedamp protection	Ex db eb I Mb
ATEX gas certificate	PTB 00 ATEX 1031 U
ATEX gas explosion protection	Ex II 2 G Ex db eb IIC T6 Gb
ATEX firedamp certificate	PTB 00 ATEX 1031 U
ATEX firedamp protection	Ex I M2 Ex db eb I Mb
UL gas certificate	E182378V1S1
Inmetro gas certificate	ULBR130645U
Certificates	Brazil (ULB), Canada / USA (UL), Canada (UL), China (CQST), IECEX (PTB), Korea (KTL), SIL (exida)

### Functional Safety

SIL-capable	without actuators or with actuators 8602/3-006, 8602/3-009, 8602/3-010, 8602/3-012
-------------	--

### Electrical Data

Max. rated operational voltage	550 V
Min. rated operational voltage	24 V
AC UL rated operational voltage	600 V
UL rated operational current	600 A
Electrical service life	10 <sup>6</sup> operating cycles
Mechanical service life	10 <sup>4</sup> operating cycles

# Control and signalling devices

## Disconnect terminal For mounting rail mounting

### With gold-plated contacts

#### 8082/1-1-11 Art. No. 201345



#### Electrical Data

Switching capacity AC-12	250 V / 10 A 400 V / 7.5 A 550 V / 5 A
Switching capacity AC-15	110 V / 10 A 250 V / 6 A 400 V / 4 A
Switching capacity DC-13	60 V / 6 A
Switching capacity DC-13<SoftReturn/>2 contact elements in series	230 V/1 A 110 V/2.5 A

#### Ambient Conditions

Ambient temperature	-60 °C ... +70 °C
---------------------	-------------------

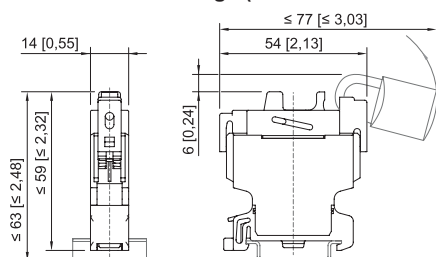
#### Mechanical Data

Degree of protection (IP) (IEC 60529)	IP20
Enclosure material	Polyamide
Contact material	Gold-plated
Silicone-free	Yes
Connection cross-section	2.5 mm <sup>2</sup>
Solid connection cross section	0.75 – 2.5 mm <sup>2</sup>
Finely stranded connection cross section	0.75 – 2.5 mm <sup>2</sup>
Connection cross-section, finely stranded with core end sleeve	0.75 – 2.5 mm <sup>2</sup>
Number of NCs	1
Contacts	1 NC
Packaging unit	1
Weight	30 g
Weight	0.066 lb

#### Mounting / Installation

Tightening torque	1.2 Nm
Tightening torque lbf in	10.62 lbf in
Connection type	Screw terminal
Max. USA solid connection terminals	14 AWG

#### Dimensional Drawings (All Dimensions in mm [inches]) – Subject to Alterations



We reserve the right to make alterations to the technical data, dimensions, weights, designs and products available without notice. The illustrations cannot be considered binding.