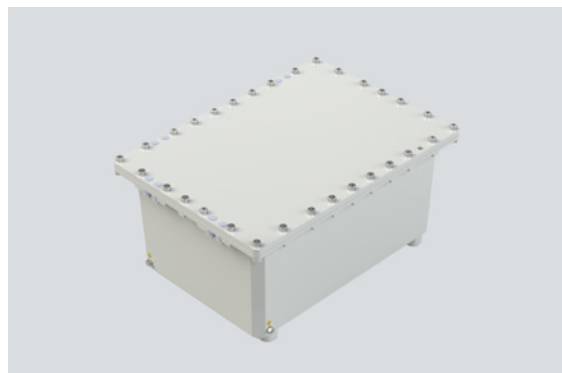


8250/0-0540-0360-263-420030 Art. No. 294284



- Lightweight, cost-effective enclosure, made of copper-free aluminium
- Suitable for operation in Zones 1, 2, 21 and 22
- Ex d and Ex tb certified
- Gas group IIB + H2
- Degree of protection IP65 or IP66
- Retrofittable hinges
- Customer-specific configuration of the operating elements, of the number of cable glands and of the cable gland types

MY R. STAHL 8250C



The 8250 enclosure series forms the ideal basis for designing application-specific configurations of motor control units, control stations, terminal boxes, controls and distribution panels. The enclosure enables the installation of electric components and operating elements according to customer specification.

Flameproof cable glands with the Ex d type of protection or threaded holes for conduit connection can be used for direct cable entry into the enclosures.

Technical Data

Explosion Protection

| | |
|---------------------------------|---------------------------------|
| Application range (zones) | 1 2 21 22 |
| IECEX gas certificate | IECEX BVS 13.0067U |
| IECEX gas explosion protection | Ex db IIB / IIB+H2 Gb |
| IECEX dust certificate | IECEX BVS 13.0067U |
| IECEX dust explosion protection | Ex tb IIIC Db |
| ATEX gas certificate | BVS 13 ATEX E057U |
| ATEX gas explosion protection | Ex II 2 G Ex db IIB / IIB+H2 Gb |
| ATEX dust certificate | BVS 13 ATEX E057U |
| ATEX dust explosion protection | Ex II 2 D Ex tb IIIC Db |
| Certificates | ATEX (BVS), IECEX (BVS) |

Electrical Data

| | |
|------------------------------|---------|
| Rated operational voltage DC | 11000 V |
| Rated operational voltage AC | 11 kV |
| Rated operational current | 1250 A |

Ambient Conditions

| | |
|---------------------|---|
| Ambient temperature | -20 °C ... +70 °C (For IIB) -20 °C ... +60 °C (For IIB+H2) |
| Storage temperature | -60 °C ... +80 °C |

Mechanical Data

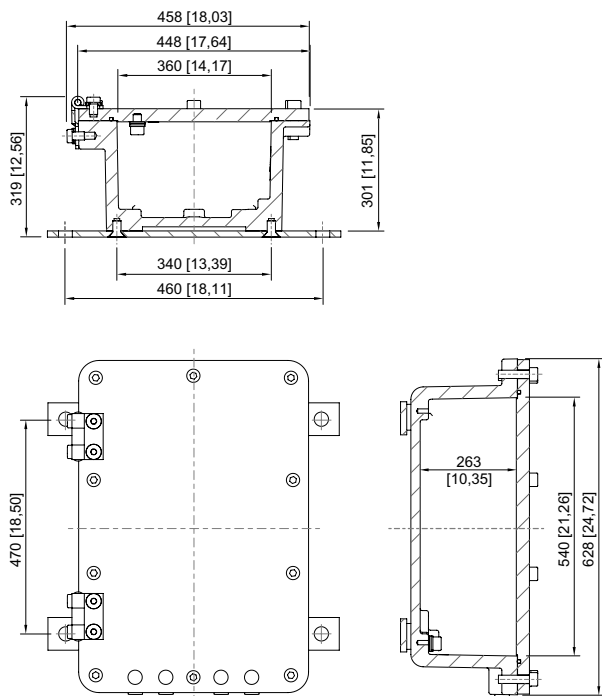
| | |
|---------------------------------------|---|
| Degree of protection (IP) (IEC 60529) | IP66 (with O-ring) IP65 (without O-ring) |
| Enclosure material | Cast aluminium alloy BS 1490 aluminium LM6 |

8250/0-0540-0360-263-420030 Art. No. 294284

Mechanical Data

| | |
|------------------------|---|
| Enclosure colour | Light grey (RAL 7035) |
| Enclosure colour note | Other colours on request |
| Cover material | EN - AW6082 |
| Cover | Flat panel |
| Cover fixing type | With standard screw, According to the order |
| Width | 540 mm |
| Height | 360 mm |
| Depth | 263 mm |
| Built-in components | without |
| Enclosure size | 5 |
| Left openings (180°) | According to the order |
| Top openings (90°) | According to the order |
| Right openings (0°) | According to the order |
| Bottom openings (270°) | According to the order |
| Weight | 46.5 kg |
| Weight | 102.51 lb |

Dimensional Drawings (All Dimensions in mm [inches]) – Subject to Alterations



Enclosure size 5

Accessories

| Hinge | | Art. No. |
|-------|-----------------------|----------|
| | Hinge for Series 8250 | 294285 |

Installation equipment

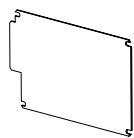
Empty enclosure



8250/0-0540-0360-263-420030 Art. No. 294284

Mounting plate

Art. No.

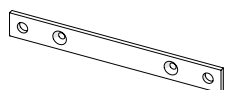


Mounting plate for size 5

225908

Wall mounting

Art. No.



Wall-mounting rail for size 5

225913

We reserve the right to make alterations to the technical data, dimensions, weights, designs and products available without notice. The illustrations cannot be considered binding.