



- Six basic enclosure sizes, optional inspection windows, direct and indirect cable entry possible
- International certification, wide temperature range, seawater-resistant light-metal enclosure
- Suitable series 8146/8150 connection-chamber enclosures possible

### MY R. STAHL 8265A



R. STAHL series 8265 Ex d enclosures are ideal for motor control units, control boxes and terminal boxes. We equip these with various components, including sparking equipment, according to customer requirements. The cable entry can be direct or indirect. The large cover opening makes commissioning and maintenance easier. Single enclosures are ideal as components in Ex e control systems. Optional, large inspection window possible.

## Technical Data

### Explosion Protection

Application range (zones)	1 2 21 22
IECEX gas certificate	IECEX PTB 07.0027 U
IECEX gas explosion protection	Ex db eb IIC Gb
IECEX dust certificate	IECEX PTB 07.0027 U
IECEX dust explosion protection	Ex tb IIIC Db
ATEX gas certificate	PTB 06 ATEX 1023 U
ATEX gas explosion protection	Ex II 2 G Ex db eb IIC Gb
ATEX dust certificate	PTB 06 ATEX 1023 U
ATEX dust explosion protection	Ex II 2 D Ex tb IIIC Db
Marking cULus	Class I, Div. 1, Groups A, B, C & D Class I, Zone 1, Group IIC Class II, Div. 1, Groups E, F & G Class III
Certificates	ATEX (PTB), Brazil (ULB), China (NEPSI), IECEX (PTB), Taiwan (ITRI)
Declaration of Conformity	Certificate of conformity (ATEX)

### Ambient Conditions

Ambient temperature	-50 °C ... +60 °C
Ambient temperature	-58°F ... +140°F

### Mechanical Data

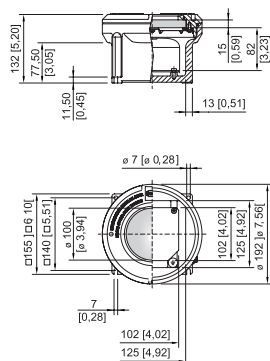
Degree of protection (IP)	IP54
Note on degree of protection	IP66 with O-ring silicone -60 °C ... +60 °C
Enclosure material	Aluminium, copper-free, Seawater-resistant
Enclosure colour	without
Material note	Where there will be direct contact with seawater, a coating is recommended.

8265/02-0010 Art. No. 209700

### Mechanical Data

Clamping range max.	95 mm <sup>2</sup>
Cover	With inspection window
Design	Without entry
Width	155 mm
Width in inches	6.1 in
Height	132 mm
Height, inches	5.2 in
Length	155 mm
Length, inches	6.1 in
Diameter	192 mm
Diameter inch	7.56 in
Enclosure size	2
Weight	3.95 kg
Weight	8.71 lb

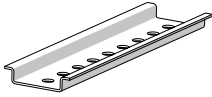
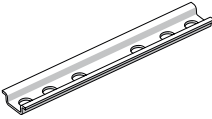
### Dimensional Drawings (All Dimensions in mm [inches]) – Subject to Alterations



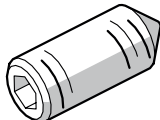
Enclosure size 2 with inspection window

### Accessories

#### Mounting rail

		Art. No.
	TS35 length: 105 mm [4.13 in] for enclosure size 2	143498
	TS15 length: 105 mm [4.13 in] for enclosure size 2	143497

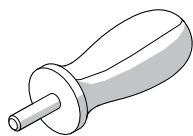
#### Threaded pin

		Art. No.
	M5x16-A2 with allen screw and point	110216

8265/02-0010 Art. No. 209700

### Box spanner

Art. No.



to open the enclosure cover for size 1, 2, 3, 4  
2 box spanner are required

142059

### Spare Parts

#### Cover with inspection window

Art. No.



for enclosure size 2  
visible part of window  $\varnothing$  102 mm [4,02 inch]

209698

#### Mounting plate

Art. No.

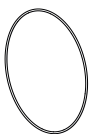


for enclosure size 2  
M5 x 8 screws are not included.

143484

#### O-ring

Art. No.



silicone, for enclosure size 2

305499

We reserve the right to make alterations to the technical data, dimensions, weights, designs and products available without notice. The illustrations cannot be considered binding.