

# Control Devices

Control device for panel mounting

Ex e

8003/113-726-2-r-6 UL Art. No. 213524



- Flexible configuration due to pushbutton, mushroom push-button, mushroom stay-put button, mushroom stay-put button with key lock, key-operated button, key-operated switch
- Easy assembly thanks to single-hole mounting (D 30)
- Codable "latching", "spring return", "key not removable" functions
- Plug-in connection with 6 m connection line

MY R. STAHL 8003D



R. STAHL Series 8003 control buttons and/or switches for panel mounting switch load, control and signal circuits up to 6 A. Depending on the type, they are complete or incomplete explosion-protected equipment with corresponding requirements for installation. As an option, various actuators are available.

## Technical Data

### Explosion Protection

Scope of validity	European Union (ATEX) CEC IECEX NEC
Application range (zones)	1 2 21 22
IECEX gas certificate	IECEX PTB 06.0065X
IECEX gas explosion protection	Ex db eb IIC T6 Gb
IECEX dust certificate	IECEX PTB 06.0065X
IECEX dust explosion protection	Ex tb IIIC T80 °C Db
ATEX gas certificate	PTB 02 ATEX 1057 X
ATEX gas explosion protection	⊕ II 2 G Ex db eb IIC T6 Gb
ATEX dust certificate	PTB 02 ATEX 1057 X
ATEX dust explosion protection	⊕ II 2 D Ex tb IIIC T80 °C Db
Certificates	ATEX (PTB), Canada (UL), IECEX (PTB), Korea (KGS), USA (UL)
Declaration of Conformity	ATEX (EUK), ATEX (Simple apparatus), China (CCC), Declaration of Conformity (ATEX)
Notes	Product label may vary. Series devices have certification according to ATEX, IECEX, NEC® and CE Code.

### Electrical Data

Rated operational voltage AC	500 V
Rated operational current	6 A
Switching capacity AC-12	500 V / 6 A / max. 3000 VA
Switching capacity AC-15	400 V / 6 A / max. 1250 VA
Switching capacity DC-13	110 V / 1 A / max. 110 W
Switching capacity DC-13<SoftReturn/>2 contact elements in series	60 V/6 A

# Control Devices

## Control device for panel mounting

Ex e

8003/113-726-2-r-6 UL Art. No. 213524



### Ambient Conditions

Ambient temperature	-20 °C ... +60 °C
Ambient temperature	-4 °F ... +140 °F
Ambient temperature NEC®	-30 °C ... +60 °C
Ambient temperature NEC®	-22 °F ... +140 °F

### Mechanical Data

Degree of protection (IP) (IEC 60529)	Reverse side IP65, front side IP65
Enclosure material	Polyamide
Contact material	Silver-nickel
Silicone-free	Yes
Number of NCs	1
Number of NOs	1
Number of switching positions	2
Conductor length	6 m
Conductor length, inches	236.22 in
Connection cross-section	0.75 ... 1.5 mm <sup>2</sup>
Connection cross-section AWG	20 AWG ... 14 AWG
Type of connection cable	ÖLFLEX 4x1 mm <sup>2</sup>
Depth of cut-out	130 mm
Mounting depth, inches	5.12 in
Service life, min.	10 <sup>5</sup> operating cycles
Weight	125 g
Weight	0.28 lb

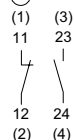
### Mounting / Installation

Tightening torque	3 Nm
Tightening torque lbf in	26.55 lbf in

### Components

Actuator	Rotary actuator, small Not padlockable
Entry 1	8161/7-M16-0902
Entry 1 type	Polyamide cable gland, black

### Technical Drawings – Subject to Alterations



Schematic 8003/113

NO / NC positive opening

Numbers in brackets according to core identification

# Control Devices

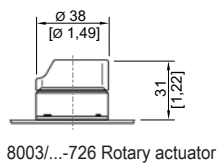
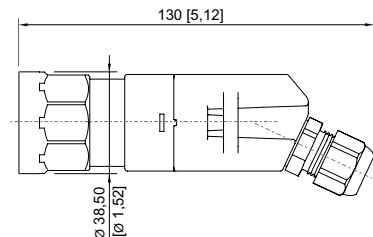
Control device for panel mounting

Ex e

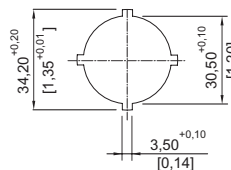
8003/113-726-2-r-6 UL Art. No. 213524



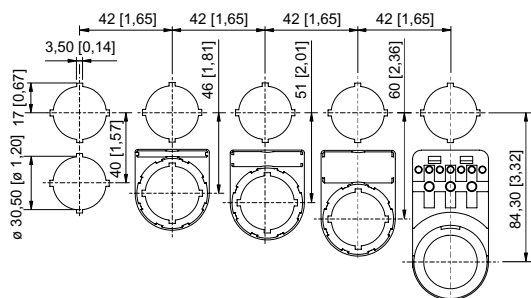
## Dimensional Drawings (All Dimensions in mm [inches]) – Subject to Alterations



8003/...-726 Rotary actuator



Cut-out details



Cut-out with/without additional designation plate

## Accessories

### Actuator



Control switch, not padlockable  
2 positions:  
0 = latching  
I = latching

### Art. No.

155533

### Actuators



Control switch, not lockable  
Two switching positions:  
0 = spring return  
I = spring return

### Art. No.

155542

## Spare Parts

### Label mount



Label mount, size 1, without symbol label  
Text: 1 line  
for actuators to fit Ø 30.5 mm holes

### Art. No.

155632



Label mount, size 2, without symbol label  
Text: 1 or 2 lines  
for actuators to fit Ø 30.5 mm holes

### Art. No.

155687



Label mount, size 3, without symbol label  
Text: 1, 2 or 3 lines  
for actuators to fit Ø 30.5 mm holes

### Art. No.

155844

# Control Devices

Control device for panel mounting




Ex e

8003/113-726-2-r-6 UL Art. No. 213524



## Insert discs for label holder

Art. No.

	One-line Plain Material: PVC Colour: White Self-adhesive	238271
	Two-line Plain Material: PVC Colour: White Self-adhesive	238272
	Three-line Plain Material: PVC Colour: White Self-adhesive	238273

We reserve the right to make alterations to the technical data, dimensions, weights, designs and products available without notice. The illustrations cannot be considered binding.