

8146/5061 Art. No. 225803



- Practical Ex e control boxes made of glass fibre reinforced polyester resin
- Can be equipped as required with control devices, indicator lamps, illuminated pushbuttons, control switches, ammeters and voltmeters
- Optional: Flanges, cover hinges, flange enclosures, brass plates, cable glands made of metal

MY R. STAHL 8146F



R. STAHL Series 8146 control boxes are available in eight basic sizes and various enclosure heights; they can be combined to make larger units. They are made of high-quality glass fibre reinforced polyester resin. We equip these with various components according to customer requirements, whereby the following optional accessories are available: Flanges, cover hinges or cable glands made of metal.

Technical Data

Explosion Protection

Area of application	European Union (ATEX) IECEX
Application range (zones)	1, 2, 21, 22
IECEX gas certificate	IECEX PTB 06.0090
IECEX gas explosion protection	Ex eb IIC T6 ... T4 Gb
IECEX dust certificate	IECEX PTB 06.0090
IECEX dust explosion protection	Ex tb IIIC T80 °C ... T130 °C Db
ATEX gas certificate	PTB 01 ATEX 1024
ATEX gas explosion protection	⊕ II 2 G Ex eb IIC T6 ... T4 Gb
ATEX dust certificate	PTB 01 ATEX 1024
ATEX dust explosion protection	⊕ II 2 D Ex tb IIIC T80 °C ... T130 °C Db
Certificates	ATEX (PTB), Canada (FM), China (NEPSI), IECEX (PTB), India (PESO), Korea (KGS), USA (FM)
Ship approval	DNV
Notes	Product label may vary. Series devices are labelled with ATEX and IECEX.

Electrical Data

Rated operational voltage AC	0 ... 1000 V
Rated operational current	0 – 630 A
Notes	Depending on the built-in components.

Ambient Conditions

Ambient temperature	-20 °C ... +40 °C (T6) (T80 °C) -20 °C ... +55 °C (T5) (T95 °C) -20 °C ... +70 °C (T4) (T130 °C)
Ambient temperature	-4°F ... +104°F (T6) (T80 °C) -4°F ... +131°F (T5) (T95 °C) -4°F ... +158°F (T4) (T130 °C)

8146/5061 Art. No. 225803

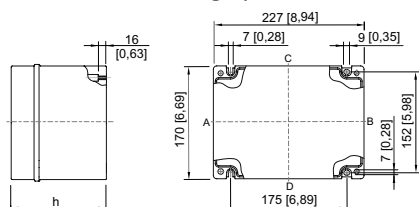
Mechanical Data

Degree of protection IP (IEC 60529)	IP66
Enclosure material	Polyester resin, Glass fibre reinforced
Enclosure colour	Dark grey
Flammability according to	IEC/EN 60695 UL 94 ASTM D635
Silicone-free	Yes
Cover fixing type	With captive screws
Cover thickness	2.8 mm
Cover thickness in inches	0.11 in
Wall thickness	2.8 mm
Wall thickness in inches	0.11 in
Width	227 mm
Width, inches	8.937 in
Height	170 mm
Height in inches	6.692 in
Depth	91 mm
Depth in inches	3.583 in
Weight	1.15 kg
Weight	2.54 lb

Components

Flange and plates	Without flange
-------------------	----------------

Dimensional Drawings (All Dimensions in mm [inches]) – Subject to Alterations



8146/.06.
8146/.061: h = 91 mm [3.58 inch]
8146/.062: h = 131 mm [5.16 inch]

We reserve the right to make alterations to the technical data, dimensions, weights, designs and products available without notice. The illustrations cannot be considered binding.