

CMP-767-E-T1-2 Art. No. 230112



- Ex-d und Ex-e metal stopping plugs
- Large selection of metric thread sizes
- Operating temperature range: -60 °C to +200 °C
- Worldwide certification, IECEX, ATEX, UL and cCSAus

MY R. STAHL 767DA



The metallic Ex-d stopping plugs from the 767 series with a truss head and hexagon socket enable temporary or continuous plugging of unused drilled holes. There is a large selection of different metric thread sizes and types available. They have worldwide certification according to IECEX, ATEX, UL and cCSAus.

Technical Data

Explosion Protection

Application range (zones)	1 2 20 21 22
IECEX gas certificate	IECEX SIM 15.0002X
IECEX gas explosion protection	Ex eb IIC Gb
IECEX dust certificate	IECEX CML 18.0177X
IECEX dust explosion protection	Ex ta IIIC Da
IECEX firedamp certificate	IECEX CML 18.0177X
IECEX firedamp protection	Ex db I Mb
IECEX firedamp protection 2	Ex eb I Mb
ATEX gas certificate	CML 18ATEX1320X
ATEX gas explosion protection	⊕ II 2 G Ex eb IIC Gb
ATEX dust certificate	CML 18ATEX1320X
ATEX dust explosion protection	⊕ II 1 D Ex ta IIIC Da
ATEX firedamp certificate	CML 18ATEX1320X
ATEX firedamp protection	⊕ I M2 Ex db I Mb
ATEX firedamp protection 2	⊕ I M2 Ex eb I Mb
Notes	The product certification and certificates can be downloaded from the manufacturer's homepage (www.cmp-products.com)

Ambient Conditions

Ambient temperature	-60 °C ... +60 °C
---------------------	-------------------

Mechanical Data

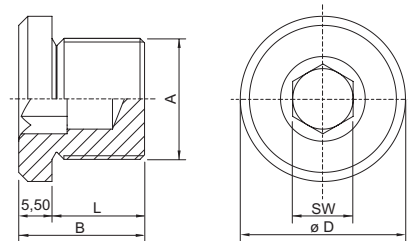
Degree of protection (IP)	IP66
Degree of protection note	IP67 and IP68 mounting in accordance with the specifications of the manufacturer, CMP
Material	Nylon (polyamide)

CMP-767-E-T1-2 Art. No. 230112

Mechanical Data

Silicone-free	Yes
Drive	Hexagon socket
Width across corners	26.4 mm
Width across flats	SW24
Hexagon socket width across flats	M10
Height	5.5 mm
Outer diameter	26.4 mm
Thread size	NPT1/2"
Thread length	19.9 mm
Thread pitch	1,8143
Packaging unit	1
Weight	-

Dimensional Drawings (All Dimensions in mm [inches]) – Subject to Alterations



A = Thread size
 B = Length
 L = Thread length
 D = Outer diameter
 SW = Width across flats

We reserve the right to make alterations to the technical data, dimensions, weights, designs and products available without notice. The illustrations cannot be considered binding.