

CMP-767-E-T2-2 Art. No. 230113



- Metal Ex d and Ex e stopping plugs
- Wide selection of metric thread sizes
- Operating temperature range -60 °C to +200 °C
- Global certification, IECEx, ATEX, cCSAus and UL

MY R. STAHL 767DA



The Series 767 metal Ex d and Ex e stopping plugs with flat round head and hexagon socket make it possible to temporarily or permanently seal unused drilled holes. There is a wide selection of different metric thread sizes available for this. They have global certification according to IECEx, ATEX, UL and cCSAus.

Technical Data

Explosion Protection	
Application range (zones)	1, 2, 20, 21, 22
IECEX gas certificate	IECEX SIM 15.0002X
IECEX gas explosion protection	Ex eb IIC Gb
IECEX dust certificate	IECEX CML 18.0177X
IECEX dust explosion protection	Ex ta IIIC Da
IECEX firedamp certificate	IECEX CML 18.0177X
IECEX firedamp protection	Ex db I Mb
IECEX firedamp protection 2	Ex eb I Mb
ATEX gas certificate	CML 18ATEX1320X
ATEX gas explosion protection	⊕ II 2 G Ex eb IIC Gb
ATEX dust certificate	CML 18ATEX1320X
ATEX dust explosion protection	⊕ II 1 D Ex ta IIIC Da
ATEX firedamp certificate	CML 18ATEX1320X
ATEX firedamp protection	⊕ I M2 Ex db I Mb
ATEX firedamp protection 2	⊕ I M2 Ex eb I Mb
Notes	The product certificates can be downloaded from the manufacturer's homepage (www.cmp-products.com)

Ambient Conditions

Ambient temperature	-60 °C ... +60 °C
---------------------	-------------------

Mechanical Data

Degree of protection (IP)	IP66
Degree of protection note	IP67 and IP68 mounting according to the specifications of the manufacturer, CMP
Material	Nylon (polyamide)
Silicone-free	Yes
Drive	Hexagon socket
Width across corners	33.6 mm
Width across flats	WAF30.5

Installation equipment and accessories

Stopping plug With convex head

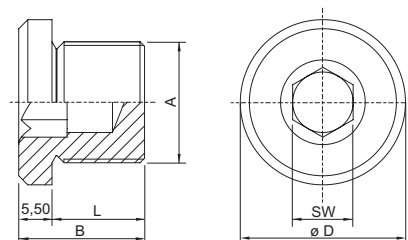


CMP-767-E-T2-2 Art. No. 230113

Mechanical Data

Hexagon socket width across flats	M10
Height	5.5 mm
Outer diameter	33.6 mm
Thread size	NPT3/4"
Thread length	20.2 mm
Thread pitch	1,8143
Packaging unit	1
Weight	20 g
Weight	0.04 lb

Dimensional Drawings (All Dimensions in mm [inches]) – Subject to Alterations



A = Thread size
B = Length
L = Thread length
D = Outer diameter
SW = Width across flats

We reserve the right to make alterations to the technical data, dimensions, weights, designs and products available without notice. The illustrations cannot be considered binding.