

# Installation Equipment and Accessories



## Cable gland

With reduction sealing insert

8161/8-M40-2812-L Art. No. 239199



- For safe cable entry in Ex e and Ex i areas
- Can be used at temperatures of between -60 ... +75 °C, degree of protection IP68
- Available in Ex e and Ex i versions (Ex i version distinguished by its blue cap nut)
- Suitable for cable diameters from 1 ... 48 mm
- Versions with multi-seal inserts

MY R. STAHL 8161B



R. STAHL's 8161/7 and 8161/8 series cable entries can be used to safely run cables into Ex e enclosures. They are suitable for cables between 1 to 48 mm in diameter. They are available for Ex e and Ex i circuits – the Ex i version can be distinguished by its blue cap nut. A stopping plug can be integrated to seal any cable entries that are not being used.

## Technical Data

### Explosion Protection

|                                 |  |
|---------------------------------|--|
| Ex version                      | Ex i   |
| Application range (zones)       | 1<br>2<br>21<br>22                                 |
| IECEX gas certificate           | IECEX PTB 14.0011 X                                |
| IECEX gas explosion protection  | Ex eb IIC Gb                                       |
| IECEX dust certificate          | IECEX PTB 14.0011 X                                |
| IECEX dust explosion protection | Ex tb IIIC Db                                      |
| ATEX gas certificate            | PTB 14 ATEX 1008 X                                 |
| ATEX gas explosion protection   | ⊕ II 2 G Ex eb IIC Gb                              |
| ATEX dust certificate           | PTB 14 ATEX 1008 X                                 |
| ATEX dust explosion protection  | ⊕ II 2 D Ex tb IIIC Db                             |
| Certificates                    | ATEX (PTB), Brazil (ULB), IECEX (PTB), Korea (KGS) |
| Declaration of Conformity       | ATEX (EUK)   |

### Ambient Conditions

|                      |                   |
|----------------------|-------------------|
| Ambient temperature  | -40 °C ... +75 °C |
| Use at the height of | < 2000 m          |

### Mechanical Data

|                           |   |
|---------------------------|---|
| Strain relief             | No  |
| Degree of protection (IP) | IP66  |
| Degree of protection note | IP68 at 5 bar 30 min. (IP protection according to IEC/EN 60529) |
| Sealing material          | EPDM profile seal   |
| Sealing ring material     | EPDM  |
| Material                  | Polyamide   |
| Material 2                | Glass fibre reinforced  |
| Silicone-free             | Yes   |

## Cable gland

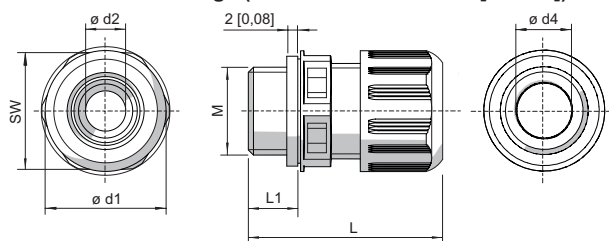
With reduction sealing insert

8161/8-M40-2812-L Art. No. 239199

### Mechanical Data

|                             |                        |
|-----------------------------|------------------------|
| Self-extinguishing          | Yes                    |
| Flame-retardant             | Yes                    |
| Halogen-free                | Yes                    |
| Surface resistance          | $\leq 10^{13} \Omega$  |
| Clamping range              | 12 – 28 mm             |
| Armouring type              | Unarmoured cable types |
| Clamping range              | 12 ... 28 mm           |
| Total length                | 58 to 71 mm            |
| Dimension d1                | 51 mm                  |
| Dimension d2                | 28.3 mm                |
| Dimension d4                | 30 mm                  |
| Width across corners        | 51 mm                  |
| Width across flats          | 46 mm                  |
| Thread size                 | M40                    |
| Thread length               | 18 mm                  |
| Thread pitch                | 1,5 mm                 |
| Impact strength (IEC 60079) | 7 J                    |
| Impact strength             | 7 J                    |
| Colour                      | Blue                   |
| Lot size                    | 10                     |
| Weight                      | 68 g                   |
| Weight                      | 0.15 lb                |

### Dimensional Drawings (All Dimensions in mm [inches]) – Subject to Alterations



M = Thread size  
 SW = Width across flats  
 L1 = Thread length  
 L = Total length

### Cable glands without bend protection

| Thread size | Width across flats | Total length | Total length (with long thread) | Thread length | Thread length (long thread) | Clamping range | Clamping range + reduction sealing insert | Dimension d1 | Dimension d2 | Dimension d4 |
|-------------|--------------------|--------------|---------------------------------|---------------|-----------------------------|----------------|---|--------------|--------------|--------------|
| M12         | 16.00 mm           | 29 to 34 mm  | 35 to 40 mm                     | 9 mm          | 15 mm                       | 3 - 6 mm       | 1 - 6 mm                                  | 18 mm        | 7.3 mm       | 6.3 mm       |
| M16         | 20.00 mm           | 31 to 37 mm  | 37 to 43 mm                     | 9 mm          | 15 mm                       | 5 - 9 mm       | 2 - 9 mm                                  | 22 mm        | 10.3 mm      | 9.3 mm       |
| M20         | 24.00 mm           | 36 to 43 mm  | 41 to 48 mm                     | 10 mm         | 15 mm                       | 7 - 13 mm      | 4 - 13 mm                                 | 27 mm        | 13.3 mm      | 13.3 mm      |
| M25         | 29.00 mm           | 38 to 46 mm  | 43 to 51 mm                     | 10 mm         | 15 mm                       | 10 - 17 mm     | 7 - 17 mm                                 | 32 mm        | 17.3 mm      | 17.3 mm      |

# Installation Equipment and Accessories



## Cable gland

With reduction sealing insert

8161/8-M40-2812-L Art. No. 239199


|     |             |                |                |       |       |            |            |       |            |            |
|-----|-------------|----------------|----------------|-------|-------|------------|------------|-------|------------|------------|
| M32 | 36.00<br>mm | 42 to 50<br>mm | 45 to 53<br>mm | 12 mm | 15 mm | 13 - 21 mm | 9 - 21 mm  | 40 mm | 21.3<br>mm | 21.3<br>mm |
| M40 | 46.00<br>mm | 52 to 65<br>mm | 58 to 71<br>mm | 12 mm | 18 mm | 17 - 28 mm | 12 - 28 mm | 51 mm | 28.3<br>mm | 30<br>mm   |
| M50 | 55.00<br>mm | 59 to 72<br>mm | 63 to 76<br>mm | 14 mm | 18 mm | 23 - 35 mm | 16 - 35 mm | 61 mm | 35.3<br>mm | 40<br>mm   |
| M63 | 68.00<br>mm | 64 to 78<br>mm | 67 to 81<br>mm | 15 mm | 18 mm | 34 - 48 mm | 28 - 48 mm | 75 mm | 48.3<br>mm | 53<br>mm   |

## Accessories

### Locknut, brass nickel-plated (-60 ... +75 °C)

To fasten the cable glands in through holes


Art. No.

|  |   |              |        |
|--|---|--------------|--------|
|  | Material: Nickel-plated brass<br>Thread size: M40 | Lot size: 50 | 241563 |
|--|---|--------------|--------|

### Locknut, plastic (-40 ... +75 °C)

To fasten the cable glands in through holes

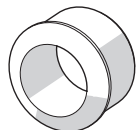
Art. No.

|   |   |              |        |
|---|---|--------------|--------|
|  | Material: Polyamide<br>Thread size: M40 | Lot size: 50 | 239465 |
|---|---|--------------|--------|

### Reduction sealing insert (standard), EPDM (-40 ... +75 °C)

For cable glands

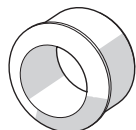
Art. No.

|  |  |              |        |
|--|--|--------------|--------|
|  | Connection thread: M40 x 1.5<br>Clamping range: 12 – 20 mm | Lot size: 10 | 239449 |
|--|--|--------------|--------|

### Reduction sealing insert, silicone (-60 ... +75 °C)

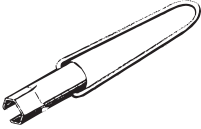
For low temperature

Art. No.

|  |  |              |        |
|--|--|--------------|--------|
|  | Connection thread: M40 x 1.5<br>Clamping range: 12 – 20 mm | Lot size: 10 | 239457 |
|--|--|--------------|--------|

### Special key

Art. No.

|  |                  |                   |        |
|--|------------------|-------------------|--------|
|  | Thread size: M40 | Packaging unit: 1 | 114210 |
|--|------------------|-------------------|--------|

### Plug (-60 ... +75 °C; depending on cable gland that has been used)

For closing unused cable glands

Material: Polyamide

Art. No.

|  |                 |              |        |
|--|-----------------|--------------|--------|
|  | Diameter: 20 mm | Lot size: 25 | 240057 |
|  | Diameter: 28 mm | Lot size: 25 | 240059 |

## Spare Parts

# Installation Equipment and Accessories



## Cable gland

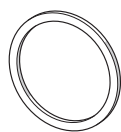
With reduction sealing insert

8161/8-M40-2812-L Art. No. 239199

### Flat gasket (standard), EPDM (-40 ... +75 °C)

#### Replacement seals for cable glands

Art. No.



For cable glands 8161/.-M40-28 Lot size: 100  
Connection thread: M40

222374

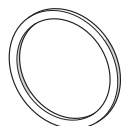
For cable glands 8161/.-M40-28 Lot size: 50  
Connection thread: M40

222367

### Flat gasket silicone (-60 ... +75°C)

#### Replacement seals for low temperature

Art. No.



For cable glands 8161/.-M40-28 Lot size: 100  
Connection thread: M40

240252

We reserve the right to make alterations to the technical data, dimensions, weights, designs and products available without notice. The illustrations cannot be considered binding.