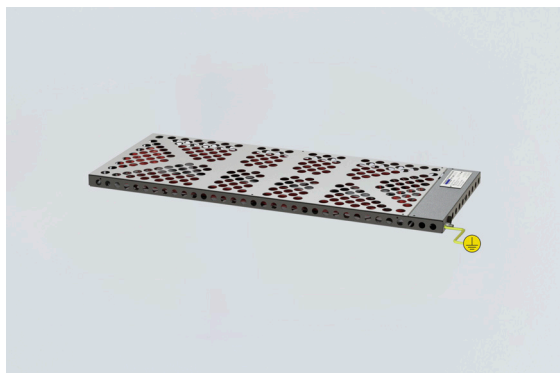


TEF92070002 Art. No. 242180



- Low profile, easy to fit inside cabinets
- Self-regulating heating element. Prevents overheating
- Rugged AISI 316L, acid steel construction
- Low maintenance
- For use inside equipment enclosures and cabinets to prevent condensation and provide climatic control
- Frost protection

MY R. STAHL T9207A



Globally approved Ex e, self regulating enclosure heater. AISI 316L acid resistant steel enclosure. With connection line for electrical connection. Delivered with power output from 100 W up to 500 W at 0 °C.

Technical Data

Explosion Protection

| | |
|--------------------------------|--------------------------|
| Application range (zones) | 1, 2 |
| IECEX gas certificate | IECEX NEM 11.0005X |
| IECEX gas explosion protection | Ex e IIC T3 Gb |
| ATEX gas certificate | NEMKO 11ATEX1098X |
| ATEX gas explosion protection | Ex II 2 G Ex e IIC T3 Gb |

Electrical Data

| | |
|-----------------|------------|
| Power | 200 W |
| Frequency range | 50 – 60 Hz |

Ambient Conditions

| | |
|---------------------|--------------------------|
| Ambient temperature | -50 °C ... +50 °C (live) |
| Storage temperature | -50 °C ... +80 °C |

Mechanical Data

| | |
|---------------------------|------------------------|
| Degree of protection (IP) | IP66 |
| Enclosure material | Stainless steel 1.4404 |
| Type of connection cable | 2 x 2.5 + PE |
| Cable length | 1.5 m |
| Dimension A | 240 mm |
| Dimension B | 550 mm |
| Dimension C | 30 mm |
| Dimension D | 440 mm |
| Dimension E | 200 mm |
| Weight | 3.81 kg |
| Weight | 8.39 lb |

TEF92070002 Art. No. 242180

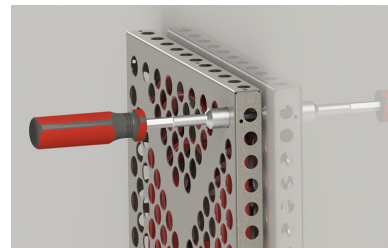
Technical Drawings – Subject to Alterations



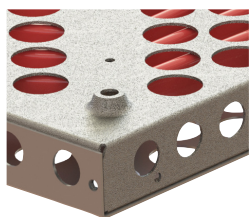
Estimated power output of heater in respect to ambient temperature
y = Effect %, x = Ambient temperature °C



Hold the heater close to the installation surface, and insert the M6 screws in each of the 4 mounting holes.

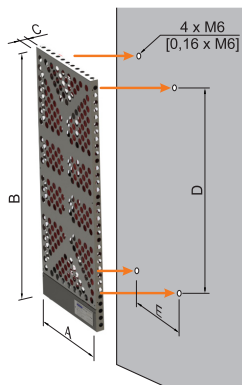


Use a tool to tighten the screws firmly to secure the heater.



4 x Ø 6 mm mounting holes on the rear side of the heater

Dimensional Drawings (All Dimensions in mm [inches]) – Subject to Alterations



| Nominal output ¹⁾ | Overall dimensions | | | Mounting dimensions | | | Length connection line |
|------------------------------|--------------------|-----|----|---------------------|-----|---------|------------------------|
| | A | B | C | D | E | | |
| 100 W | 200 | 300 | 30 | 190 | 160 | 1.62 kg | 1 m |
| 200 W | 240 | 550 | 30 | 440 | 200 | 3.44 kg | 1.5 m |
| 300 W | 280 | 700 | 30 | 590 | 240 | 5.42 kg | 1.5 m |
| 500 W | 360 | 870 | 30 | 760 | 320 | 8.02 kg | 1.5 m |

¹⁾ Note: Nominal output at still air at 0 °C

We reserve the right to make alterations to the technical data, dimensions, weights, designs and products available without notice. The illustrations cannot be considered binding.