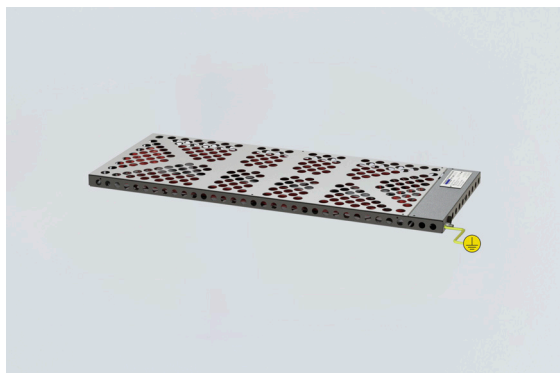


TEF92070005 Art. No. 242182



- Low profile, easy to fit inside cabinets
- Self-regulating heating element. Prevents overheating
- Rugged AISI 316L, acid steel construction
- Low maintenance
- For use inside equipment enclosures and cabinets to prevent condensation and provide climatic control
- Frost protection

**MY R. STAHL T9207A**



Globally approved Ex e, self regulating enclosure heater. AISI 316L acid resistant steel enclosure. With connection line for electrical connection. Delivered with power output from 100 W up to 500 W at 0 °C.

## Technical Data

<b>Explosion Protection</b>	
Application range (zones)	1, 2
IECEX gas certificate	IECEX NEM 11.0005X
IECEX gas explosion protection	Ex e IIC T3 Gb
ATEX gas certificate	NEMKO 11ATEX1098X
ATEX gas explosion protection	Ex II 2 G Ex e IIC T3 Gb
<b>Electrical Data</b>	
Power	500 W
Frequency range	50 – 60 Hz
<b>Ambient Conditions</b>	
Ambient temperature	-50 °C ... +50 °C (live)
Storage temperature	-50 °C ... +80 °C
<b>Mechanical Data</b>	
Degree of protection (IP)	IP66
Enclosure material	Stainless steel 1.4404
Type of connection cable	2 x 2.5 + PE
Cable length	1.5 m
Dimension A	360 mm
Dimension B	870 mm
Dimension C	30 mm
Dimension D	760 mm
Dimension E	320 mm
Weight	9 kg
Weight	19.84 lb

TEF92070005 Art. No. 242182

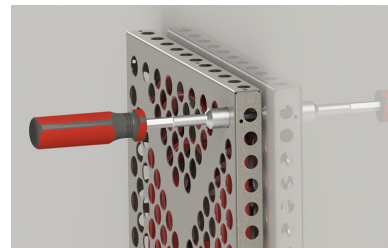
**Technical Drawings – Subject to Alterations**



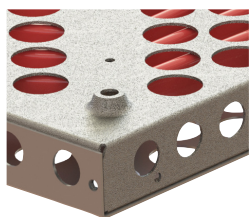
Estimated power output of heater in respect to ambient temperature  
y = Effect %, x = Ambient temperature °C



Hold the heater close to the installation surface, and insert the M6 screws in each of the 4 mounting holes.

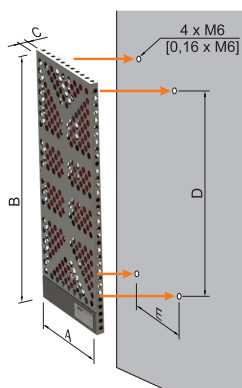


Use a tool to tighten the screws firmly to secure the heater.



4 x Ø 6 mm mounting holes on the rear side of the heater

**Dimensional Drawings (All Dimensions in mm [inches]) – Subject to Alterations**



Nominal output <sup>1)</sup>	Overall dimensions			Mounting dimensions			Length connection line
	A	B	C	D	E		
100 W	200	300	30	190	160	1.62 kg	1 m
200 W	240	550	30	440	200	3.44 kg	1.5 m
300 W	280	700	30	590	240	5.42 kg	1.5 m
500 W	360	870	30	760	320	8.02 kg	1.5 m

<sup>1)</sup> Note: Nominal output at still air at 0 °C

We reserve the right to make alterations to the technical data, dimensions, weights, designs and products available without notice. The illustrations cannot be considered binding.