

CMP-737-D-M1-M2-5 Art. No. 252965



- Metal Ex d and Ex e adaptors
- Wide selection of thread types and sizes
- Operating temperature range -60 °C to +200 °C
- Globally certified in accordance with IECEx, ATEX, UL and cCSAus

MY R. STAHL 737DB



The Series 737 metal Ex d and Ex e adaptors make it possible to adapt thread sizes and types. There is a wide selection of different versions available for this. They have global certification according to IECEx, ATEX, UL and cCSAus.

### Technical Data

#### Explosion Protection

Area of application	EAC India CCC Canada (CSA) TUV European Union (ATEX) IECEX UKEX IECEX (SIM)
Application range (zones)	1, 2, 20, 21, 22
IECEX gas certificate	IECEX CML 18.0177X
IECEX dust certificate	IECEX SIM 15.0002X
IECEX gas explosion protection	Ex eb db IIC Gb
IECEX dust explosion protection	Ex ta IIIC Da
IECEX firedamp protection	Ex db I Mb
IECEX firedamp protection 2	Ex eb I Mb
ATEX gas explosion protection	⊕ II 2 G Ex eb db IIC Gb
ATEX dust explosion protection	⊕ II 1 D Ex ta IIIC Da
ATEX firedamp protection	⊕ I M2 Ex db I Mb
ATEX firedamp protection 2	⊕ I M2 Ex eb I Mb
cCSA certificate	1055233
CSA gas certificate	1055233
Marking ULus	Class I, Zone 1 AEx eb IIC T6 Class I, Div. 2, Groups A,B,C,D Class II, Div. 2, Groups F,G Class III, Div. 2
Marking cUL	Class I, Zone 1 Ex eb IIC T6 Class I, Div. 2, Groups A,B,C,D Class II, Div. 2, Groups F,G

CMP-737-D-M1-M2-5 Art. No. 252965

### Explosion Protection

Notes	The product certificates can be downloaded from the manufacturer's homepage ( <a href="http://www.cmp-products.com">www.cmp-products.com</a> )
-------	--

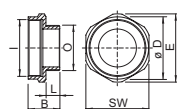
### Ambient Conditions

Ambient temperature	-60 °C ... +200 °C
---------------------	--------------------

### Mechanical Data

Version	Metric/metric
Degree of protection (IP)	IP66
Degree of protection note	IP67 and IP68 mounting according to the specifications of the manufacturer, CMP. The specified degrees of protection are only fulfilled if CMP installation accessories are used.
Degree of protection (IP) UL	IP66
Material	Nickel-plated brass
Silicone-free	Yes
Width across flats	24 mm
Outer diameter	26.4 mm
External thread	M16
Thread size	M16
Thread length	15.3 mm
Thread pitch	1,5
Thread pitch 2	1,5
Internal thread	M20
Protrusion length	19.7 mm
Impact strength (IEC 62262)	IK10
Packaging unit	1
Weight	52 g
Weight	0.11 lb

### Dimensional Drawings (All Dimensions in mm [inches]) – Subject to Alterations



O = External thread  
 l = Internal thread  
 SW = Width across flats  
 E = Width across corners  
 B = Length  
 L = Thread length

We reserve the right to make alterations to the technical data, dimensions, weights, designs and products available without notice. The illustrations cannot be considered binding.