

CMP-737-D-M5-M3-5 Art. No. 253008



- Ex d and Ex e metal reducers
- Large selection of thread types and sizes
- Operating temperature range: -60 °C ... +200 °C
- Worldwide certification, IECEX, ATEX, UL and cCSAus

MY R. STAHL 737DA



The metal Ex-d reducers from the 737 series enable adaptation of the thread sizes and types. There is a wide selection of different versions available. They have worldwide certification according to IECEX, ATEX, UL and cCSAus.

Technical Data

Explosion Protection

Application range (zones)	1 2 20 21 22
IECEX gas certificate	IECEX CML 18.0177X
IECEX gas certificate 2	IECEX SIM 15.0002X
IECEX gas explosion protection	Ex eb IIC Gb
IECEX dust certificate	IECEX CML 18.0177X
IECEX dust explosion protection	Ex ta IIIC Da
IECEX firedamp certificate	IECEX CML 18.0177X
IECEX firedamp protection	Ex db I Mb
IECEX firedamp protection 2	Ex eb I Mb
ATEX gas certificate	CML 18ATEX1320X
ATEX gas explosion protection	Ex II 2 G Ex eb IIC Gb
ATEX dust certificate	CML 18ATEX1320X
ATEX dust explosion protection	Ex II 1 D Ex ta IIIC Da
ATEX firedamp certificate	CML 18ATEX1320X
ATEX firedamp protection	Ex I M2 Ex db I Mb
ATEX firedamp protection 2	Ex I M2 Ex eb I Mb
cCSA certificate	1055233
CSA gas certificate	1055233
Notes	The product certification and certificates can be downloaded from the manufacturer's homepage (www.cmp-products.com)

Ambient Conditions

Ambient temperature	-60 °C ... +200 °C
---------------------	--------------------

Mechanical Data

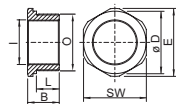
Version	Metric / metric
---------	-----------------

CMP-737-D-M5-M3-5 Art. No. 253008

Mechanical Data

Degree of protection (IP)	IP66
Degree of protection note	IP67 and IP68 mounting in accordance with the specifications of the manufacturer, CMP. The specified degrees of protection are only fulfilled if CMP installation accessories are used.
Degree of protection (IP) UL	IP66
Material	Nickel-plated brass
Silicone-free	Yes
Width across flats	46 mm
Outer diameter	50.6 mm
External thread	M40
Thread size	M40
Thread length	15 mm
Thread pitch	1,5
Thread pitch 2	1,5
Internal thread	M25
Impact strength (IEC 62262)	IK10
Packaging unit	1
Weight	200 g
Weight	0.44 lb

Dimensional Drawings (All Dimensions in mm [inches]) – Subject to Alterations



O = External thread
I = Internal thread
SW = Width across flats
E = Width across corners
B = Length
L = Thread length

We reserve the right to make alterations to the technical data, dimensions, weights, designs and products available without notice. The illustrations cannot be considered binding.