

CMP-767-D-M5-5 Art. No. 253042



- Metal Ex d and Ex e stopping plugs
- Wide selection of metric thread sizes
- Operating temperature range -60 °C to +200 °C
- Global certification, IECEx, ATEX, cCSAus and UL

MY R. STAHL 767DA



The Series 767 metal Ex d and Ex e stopping plugs with flat round head and hexagon socket make it possible to temporarily or permanently seal unused drilled holes. There is a wide selection of different metric thread sizes available for this. They have global certification according to IECEx, ATEX, UL and cCSAus.

Technical Data

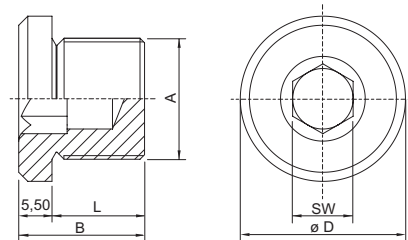
| Explosion Protection | |
|-----------------------------------|--|
| Application range (zones) | 1, 2, 20, 21, 22 |
| IECEX gas certificate | IECEX SIM 15.0002X |
| IECEX gas explosion protection | Ex db eb IIC Gb |
| IECEX dust certificate | IECEX CML 18.0177X |
| IECEX dust explosion protection | Ex ta IIIC Da |
| IECEX firedamp protection | Ex db I Mb |
| IECEX firedamp protection 2 | Ex eb I Mb |
| ATEX gas explosion protection | Ⓔ II 2 G Ex db eb IIC Gb |
| ATEX dust explosion protection | Ⓔ I 1 D Ex ta IIIC Da |
| ATEX firedamp protection | Ⓔ I M2 Ex db I Mb |
| ATEX firedamp protection 2 | Ⓔ I M2 Ex eb I Mb |
| Notes | The product certificates can be downloaded from the manufacturer's homepage (www.cmp-products.com) |
| Ambient Conditions | |
| Ambient temperature | -60 °C ... +200 °C |
| Mechanical Data | |
| Degree of protection (IP) | IP66 |
| Degree of protection note | IP67 and IP68 mounting according to the specifications of the manufacturer, CMP |
| Degree of protection (IP) UL | IP66 |
| Material | Nickel-plated brass |
| Silicone-free | Yes |
| Drive | Hexagon socket |
| Width across corners | 46 mm |
| Hexagon socket width across flats | M10 |
| Height | 5.5 mm |
| Outer diameter | 46 mm |
| Thread size | M40 |

CMP-767-D-M5-5 Art. No. 253042

Mechanical Data

| | |
|----------------|---------|
| Thread length | 15 mm |
| Thread pitch | 1,5 |
| Packaging unit | 1 |
| Weight | 200 g |
| Weight | 0.44 lb |

Dimensional Drawings (All Dimensions in mm [inches]) – Subject to Alterations



A = Thread size
B = Length
L = Thread length
D = Outer diameter
SW = Width across flats

We reserve the right to make alterations to the technical data, dimensions, weights, designs and products available without notice. The illustrations cannot be considered binding.