

8150/0-0176-0176-091-3311-C1923 Art. No. 254055



- Applicable as terminal or control box
- Corrosion-resistant, low maintenance, stainless steel 1.4404
- Can be combined to form larger units, thanks to a modular structure of the enclosures

MY R. STAHL 8150C

The Ex e enclosure of R. STAHL series 8150 offers reliable protection for the installed components, whether it is used as a terminal box or as a control box. It is made of stainless steel and is therefore extremely robust and corrosion-resistant and it requires only minimum maintenance. Thanks to the modular structure, these enclosures can be combined flexibly to form larger units.

Technical Data

Explosion Protection

Scope of validity	European Union (ATEX) IECEX
Application range (zones)	1 2 21 22
IECEX gas certificate	IECEX PTB 09.0047U
IECEX gas explosion protection	Ex eb IIC Gb
IECEX dust certificate	IECEX PTB 09.0047U
IECEX dust explosion protection	Ex tb IIIC Db
ATEX gas certificate	PTB 09 ATEX 1107 U
ATEX gas explosion protection	⊕ II 2 G Ex eb IIC Gb
ATEX dust certificate	PTB 09 ATEX 1107 U
ATEX dust explosion protection	⊕ II 2 D Ex tb IIIC Db
Certificates	ATEX (PTB), Canada / USA (UL), IECEX (PTB)
Notes	Product label may vary. Series devices have certification according to ATEX and IECEX.

Ambient Conditions

Ambient temperature	-60 °C ... +135 °C
Ambient temperature	-76 °F ... +275 °F
Storage temperature	The storage temperature corresponds to the ambient temperature

Mechanical Data

Degree of protection (IP) (IEC 60529)	IP66
Enclosure material	Stainless steel 1.4404, Brush finished
Silicone-free	No
Cover fixing type	With captive screws
Cover thickness	2 mm
Cover thickness inch	0.079 in

8150/0-0176-0176-091-3311-C1923 Art. No. 254055

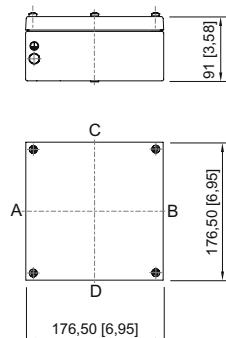
Mechanical Data

Wall thickness	1.5 mm
Wall thickness, inches	0.059 in
Width	176.5 mm
Width in inches	6.949 in
Height	176.5 mm
Height, inches	6.949 in
Depth	91 mm
Depth, inches	3.583 in
Impact strength (IEC 60079)	7 J
Impact strength (IEC 62262)	IK09
Packaging unit	1
Weight	3.7 kg
Weight	8.16 lb

Mounting / Installation

Tightening torque of cover screw 1	4.5 Nm
Tightening torque of cover screw 1 lbf in	39.83 lbf in

Dimensional Drawings (All Dimensions in mm [inches]) – Subject to Alterations



8150/-0176-0176-091-..1.

We reserve the right to make alterations to the technical data, dimensions, weights, designs and products available without notice. The illustrations cannot be considered binding.