

Components for system solutions



Mld cse crt bkr w/o the. trig.

100 A

8550/1-MCS-GLS3-MO-100-95-AS1-FS1-0000 Art. No. 315919



- Magnetic disconnect device for protecting against damage caused by short circuits
- Isolating function in accordance with EN 60947-2
- International approvals for worldwide use
- Simple replacement or expansion of your system thanks to a modular design
- Padlock provides locking in the "ON" and "OFF" positions
- Ergonomically shaped operating lever guarantees that the system can be switched on and off safely
- Large cable dia. range of the main terminals

MY R. STAHL 8550D



R. STAHL Series 8550 short-circuit breakers provide exceptional current limiting for short circuits and a high switching capacity from 100 A to 10 kA. The short-circuit trigger threshold is 16 times the nominal current. The components are designed to be modular and are therefore ideal for combining with the contactor, also available in this series, and overload relay to form a motor starter. Other applications are in power distribution boards.

Technical Data

Explosion Protection

Application range (zones)	1, 2
Application range (Zone) note	For use in Zone 21/22 when protected by Ex tb/tc enclosure
IECEx gas explosion protection	Ex db eb IIC Gb
ATEX gas explosion protection	II 2 G Ex db eb IIC Gb
FMus certificate	FM22US0011U
cFM certificate	FM22CA0006U
Marking FMus	Class I, Div. 2, Groups A,B,C,D; Zone 1, AEx db eb IIC Gb;
Marking cFM	Ex db eb IIC Gb; Class I, Div. 2, Groups A,B,C,D;
Certificates	ATEX (FM), Brazil (ULB), Canada (FM), IECEx (FM), USA (FM)

Electrical Data

AC rated operational voltage	12 ... 415 V
AC rated operat. voltage (NEC)	12 ... 480 V
Rated operational current	100 A
Frequency range	50 – 60 Hz
Electrical service life	8000
Mechanical service life	10 ⁴
Rated impulse voltage Uimp	8 kV
Main contacts	3-pole (3 NO)
1st auxiliary function	Auxiliary contact 1 change-over contact
1st auxiliary function for AC rated voltage	240 V
1st auxiliary function voltage max. DC	250 V
1st auxiliary function for rated current max.	6 A
2nd auxiliary function	Fault signal contact 1 change-over contact

Components for system solutions



Mld cse crt bkr w/o the. trig.

100 A

8550/1-MCS-GLS3-MO-100-95-AS1-FS1-0000 Art. No. 315919

Electrical Data

2nd auxiliary function voltage AC	240 V
2nd auxiliary function voltage max. DC	250 V
2nd auxiliary function for rated current max.	6 A
3rd auxiliary function	without
Tripping time	0 – 10 ms

Ambient Conditions

Ambient temperature	-25 °C ... +70 °C
Ambient temperature	-13 °F ... +158 °F

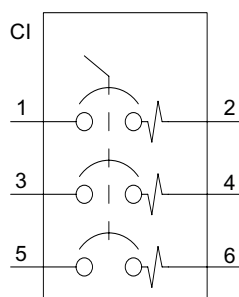
Mechanical Data

Degree of protection (IP)	IP20
Enclosure material	Thermoplast
Connection cross-section	25 – 95 mm ²
Connection cross-section AWG	4 ... 4/0 AWG
Auxiliary contact connection cross section	0.75 ... 2.5 mm ²
Connection cross-section of auxiliary contact AWG	18 AWG ... 14 AWG
Width	150 mm
Width	150 mm
Width, inches	5.91 in
Height	196 mm
Height in inches	7.72 in
Depth	336.6 mm
Depth	336.6 mm
Depth in inches	13.25 in
Weight	4.3 kg
Weight	9.48 lb

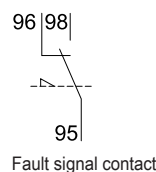
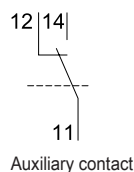
Mounting / Installation

Tightening torque	15 – 20 N · m
Tightening torque	15 ... 20 N · m
Tightening torque lbf in	132 to 177 lbf in
Tightening torque auxiliary contact	0.4 – 0.6 N · m
Tightening torque auxiliary contact	0.4 ... 0.6 N · m
Tightening torque auxiliary contact lbf in	3.54 ... 5.31 lbf-in

Technical Drawings – Subject to Alterations



Circuit diagram of the device



Components for system solutions

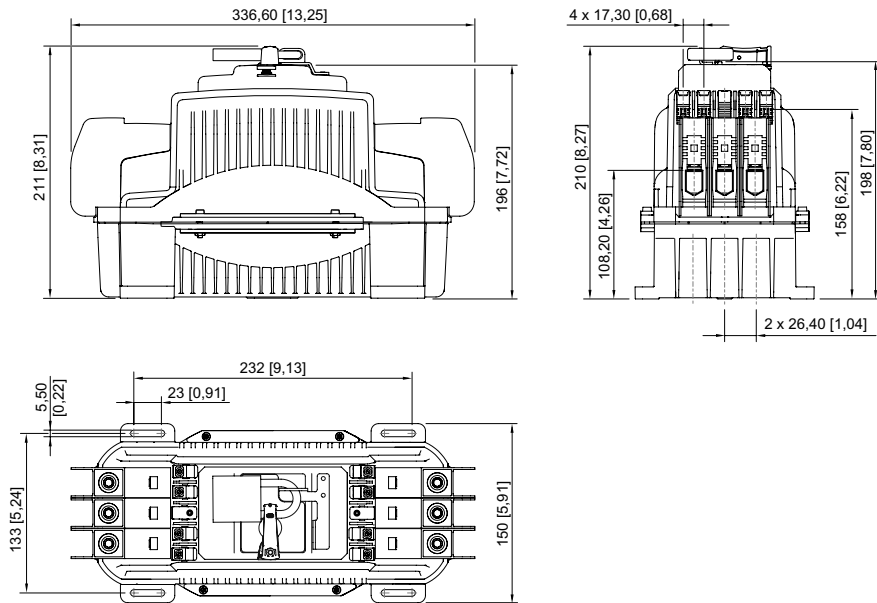
Mld cse crt bkr w/o the. trig.

100 A

8550/1-MCS-GLS3-MO-100-95-AS1-FS1-0000 Art. No. 315919



Dimensional Drawings (All Dimensions in mm [inches]) – Subject to Alterations



We reserve the right to make alterations to the technical data, dimensions, weights, designs and products available without notice. The illustrations cannot be considered binding.