

# Lighting

## Linear luminaire With LED

### GRP industrial design

L402/4368-6200-152-LLL2-22-8500 Art. No. 316967



- Highly resistant industrial design
- Can be used as a humid luminaire and in environments with high mechanical loads
- Linear luminaire with long-life, efficient LED technology (up to 138 lm/W)
- Optionally available with DALI interface or address module for use with a central battery system
- Very lightweight and robust, with an impact strength rating of IK10
- Easy to install and easy to maintain thanks to the central lock

## MY R. STAHL L402A

The EXLUX L402/4 luminaire is designed for industrial use and can be fitted to the ceiling, a pole, or alternatively, it can be suspended. A bright light for not much energy is what you get with this efficient LED technology, which offers the added benefit of increased service life – this can be as much as 100,000 hours. The plastic enclosure is easily to open by a central lock.

## Technical Data

Explosion Protection	
Ex version	Industrial design
Declaration of conformity	ATEX (EUK)
Electrical Data	
AC rated operational voltage	220 ... 240 V
DC rated operational voltage	200 ... 250 V
Frequency	50 ... 60 Hz
Control gear service life	C10 ≥ 100 h, Ta ≤ 50 °C
LED service life	L90B50 ≥ 100 h
Lighting Data	
Number of lamps	1
Lamp wattage	49 W
Lamp	LED
Light colour	5000 K – neutral white
Light distribution	120°x120° with diffusing glass
Luminaire efficacy	163 lm/W
Luminous flux	7920 lm
Colour rendering	≥ 80
Colour temperature	5000 K
Ambient Conditions	
Ambient temperature	-20 °C ... 55 °C (Through wiring max. 3x16 A) -20 °C ... 60 °C (Through wiring max. 3x10 A)
Mechanical Data	
Version	Standard
IP degree of protection (IEC 60598)	IP66
Class	I (with inner PE connection)
Enclosure material	Polyester resin, Glass fibre reinforced
Enclosure colour	Light grey (RAL 7035)

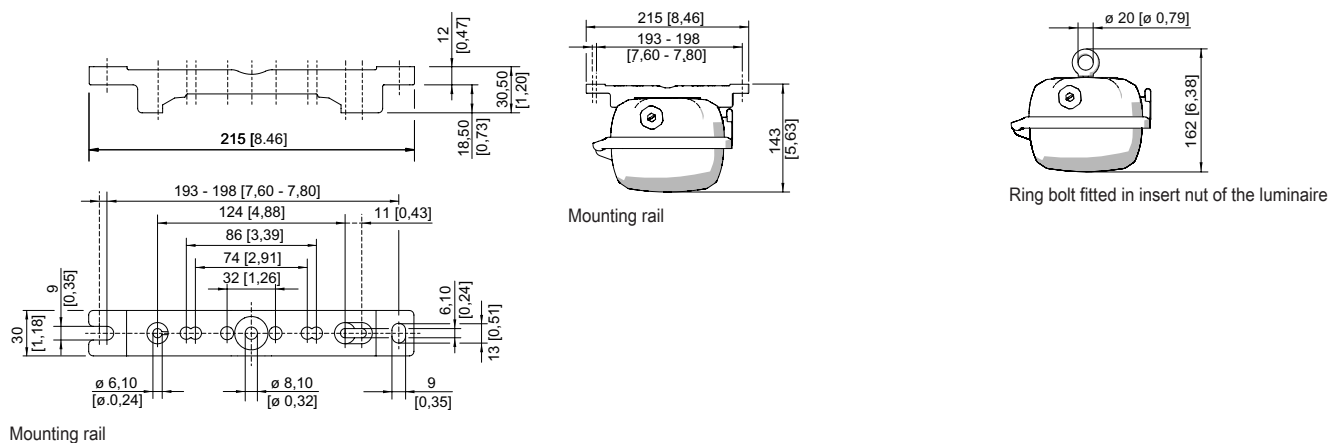
#### Mechanical Data

Insert nut material	Brass
Diffuser	With diffuser
Sealing material	Silicone
Silicone-free content	Contains silicone
Translucent cover material	Polycarbonate
Installed terminal strip	PE + N + L1 + L2 + L3
Max. solid connection terminals	6 mm <sup>2</sup>
Max. finely stranded connection terminals	4 mm <sup>2</sup>
Type of connection cable	Finely stranded Solid
Size	6
Width	184 mm
Height	125 mm
Length	1610 mm
Impact strength (IEC 62262)	IK10
Disconnection of the luminaire	No
Weight	7 kg
Weight	15.43 lb

#### Components

Threaded plate	2x SS430 stainless steel
Ballast	VG Luxtronic 80 W 350 mA
Through wiring	With 5 conductors 2.5 mm <sup>2</sup>
Drilled holes	4 x M20
Cable glands and entries	can be ordered as an accessory
Stopping plugs	3 x M20 x 1.5
Stopping plug material	Polyamide, black
Accessories	Installed

#### Dimensional Drawings (All Dimensions in mm [inches]) – Subject to Alterations

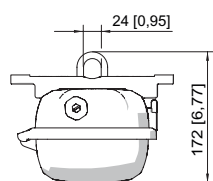


# Lighting

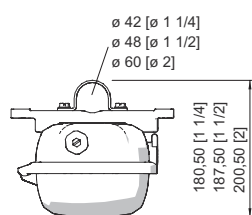
Linear luminaire With LED

GRP industrial design

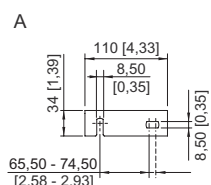
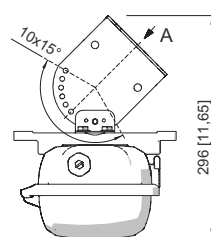
L402/4368-6200-152-LLL2-22-8500 Art. No. 316967



Mounting bracket fitted in mounting rail



Pipe clamp fitted in mounting rail

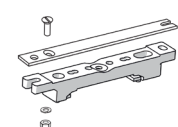


Wall mounting bracket fitted in mounting rail

## Accessories

### Adapter plate for mounting EXLUX 6002 on EXLUX 6000 mounting interfaces

Art. No.

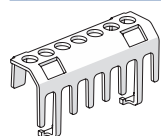


Adapter plate for installation of EXLUX 6002 luminaires onto EXLUX 6000 interfaces

240653

### Protection against accidental contact

Art. No.

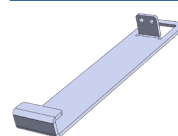


The protection against accidental contact prevents maintenance technicians and electrical installers from accidentally touching conductive parts. The degree of protection is increased to IP20 when the protection against accidental contact is used.

283153

### Fall protection

Art. No.



Accessories for mounting an arrester cable

295927

### Holder for translucent cover

Art. No.

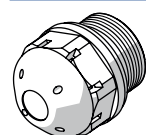


The fall prevention system for the light fitting cover prevents the light fitting cover from falling accidentally when the light fitting is opened.

226791

### Breather

Art. No.

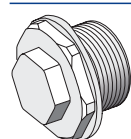


Thread: M25 x 1.5 (20 pieces); without jam nut

285780

M25 x 1.5 in order to avoid condensate formation

115738



Thread: M20 x 1.5 (1 piece); for installation in light fittings; made from stainless steel; without jam nut

323702

Thread: M25 x 1.5 (1 piece); for installation in light fittings; made from stainless steel; without jam nut

296608

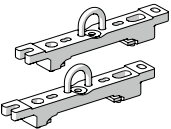
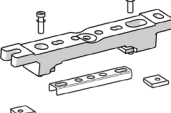
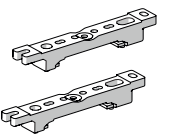
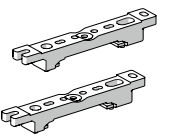

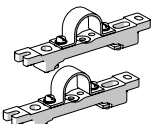
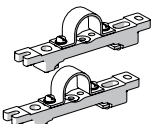
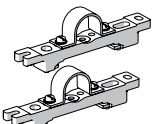
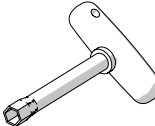
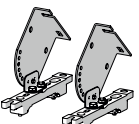
# Lighting

Linear luminaire With LED

GRP industrial design

L402/4368-6200-152-LLL2-22-8500 Art. No. 316967



Mounting bracket		Art. No.
	mounting clamp mounted on a mounting rail for a variable mounting distance; 1 pair	222456
Mounting rail		Art. No.
	Mounting accessories for ceiling mounting of EXLUX luminaires with V4A metal insert for reinforcement	325835
	Mounting accessories for ceiling mounting of EXLUX luminaires with V4A metal insert and captive M8 nut	329336
	for a variable mounting distance; 1 pair	222826
Ring bolt		Art. No.
	M8, direct mounting in insert nuts; 1 pair	115736
Pipe clamp		Art. No.
	R 1 1/2"; with mounting rail for a variable mounting distance; material: stainless steel; 1 pair	222459
	R 1 1/4"; with mounting rail for a variable mounting distance; Material: stainless steel; 1 pair	222458
	R 2"; with mounting rail for a variable mounting distance; Material: stainless steel; 1 pair	222460
Box spanner		Art. No.
	M8 / A/F 13; For actuating the central lock	222430
Ceiling and wall mounting bracket		Art. No.
	mounted on a mounting rail for a variable mounting distance; Material: stainless steel; Lamp can be swiveled in steps of 15°; 1 pair	222827

We reserve the right to make alterations to the technical data, dimensions, weights, designs and products available without notice. The illustrations cannot be considered binding.