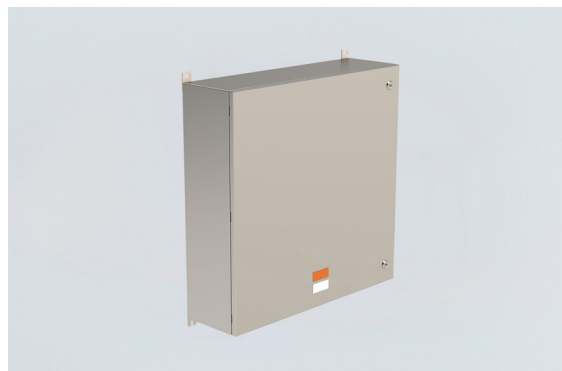


Empty enclosure

Screw-on cover

8151/0-071A-3311 Art. No. 324607



- Ex e enclosure series made of stainless steel
- Ideally suited for terminal boxes
- 14 different standard sizes
- Cover with screws or with hinge
- Available as Ex e empty enclosure or customised as Ex e terminal box

MY R. STAHL 8151A



Ex e enclosure made of high-quality 1.4404 stainless steel, specially designed for use as a terminal box. 14 standard sizes with 1 mm/1.2mm thickness, optionally with screw-on cover or hinge with screws or cam locks, offer great flexibility for a wide range of applications. Can be customised with terminal blocks from various manufacturers, as well as a large selection of cable glands, cable entries, mounting and flange plates.

The enclosures in the 8151 series are available as empty enclosures with U-certification or as fully certified Ex e terminal boxes.

Technical Data

Explosion Protection

| | |
|---------------------------------|--------------------------------|
| Area of application | European Union (ATEX) IECEX |
| Application range (zones) | 1, 2, 21, 22 |
| IECEX gas certificate | IECEX BVS 24.0002 U |
| IECEX gas explosion protection | Ex eb IIC Gb |
| IECEX dust certificate | IECEX BVS 24.0002 U |
| IECEX dust explosion protection | Ex tb IIIC Db |
| ATEX gas certificate | BVS 24 ATEX E 001 U |
| ATEX gas explosion protection | ⊕ II 2 G Ex eb IIC Gb |
| ATEX dust certificate | BVS 24 ATEX E 001 U |
| ATEX dust explosion protection | ⊕ II 2 D Ex tb IIIC Db |
| Certificates | ATEX (BVS), IECEX (BVS) |

Ambient Conditions

| | |
|---------------------|--------------------|
| Ambient temperature | -60 °C ... +135 °C |
| Ambient temperature | -76 °F ... +275 °F |

Mechanical Data

| | |
|---------------------------------------|--|
| Degree of protection (IP) (IEC 60529) | IP66 |
| Enclosure material | Stainless steel 1.4404, Brush finished |
| Silicone-free | No |
| Cover | Screw-on cover |
| Cover fixing type | With captive screws |
| Cover thickness | 1 mm |
| Cover thickness in inches | 0.0039 in |
| Wall thickness | 1 mm |

Components for system solutions

Empty enclosure

Screw-on cover

8151/0-071A-3311 Art. No. 324607



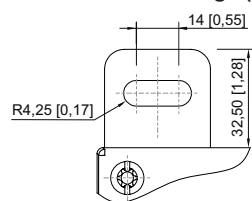
Mechanical Data

| | |
|-----------------------------|-----------|
| Wall thickness in inches | 0.0039 in |
| Width | 176.5 mm |
| Width, inches | 6.94 in |
| Height | 360 mm |
| Height in inches | 14.17 in |
| Depth | 91 mm |
| Depth in inches | 3.58 in |
| Impact strength (IEC 60079) | 7 J |
| Impact strength (IEC 62262) | IK09 |
| Packaging unit | 1 |
| Weight | 3 kg |
| Weight | 6.61 lb |

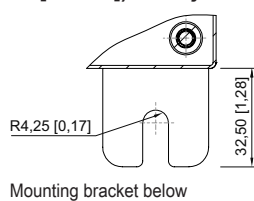
Mounting / Installation

| | |
|---|--------------|
| Tightening torque of cover screw 1 | 4.5 N · m |
| Tightening torque of cover screw 1 lbf in | 39.83 lbf in |

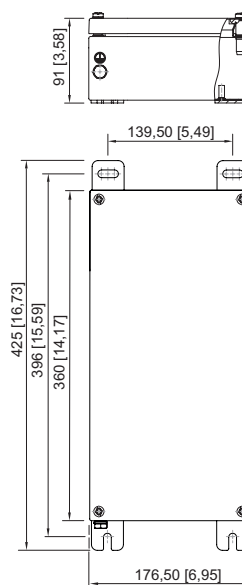
Dimensional Drawings (All Dimensions in mm [inches]) – Subject to Alterations



Mounting bracket top



Mounting bracket below



8151/0-071A-3311

We reserve the right to make alterations to the technical data, dimensions, weights, designs and products available without notice. The illustrations cannot be considered binding.