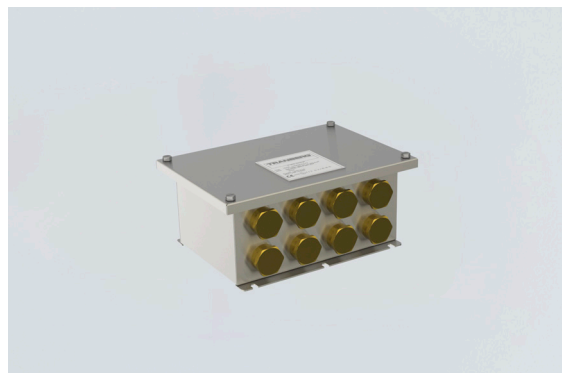


TEF10582580 Art. No. 259553



- High degree of protection IP66/67 is standard, IP67 without breather
- Manufactured in acid proof stainless steel (AISI 316L)
- Stainless steel type label spot welded to the cover
- Several earthing alternatives
- Maximum strength and corrosion resistance
- High operational reliability
- Low lifetime maintenance cost
- Recommended for up to 4 heating cables

MY R. STAHL T1058H



Tranberg's thermostats are represented in most of the oil installations in the North Sea, petrochemical industry and other industries subjected to rough environments.

Tranberg has designed and manufactured heat tracing equipment and heating applications for rough environments for more than 25 years.

Our product range includes a number of different heat tracing junction boxes.

## Technical Data

### Explosion Protection

Application range (zones)	1, 2
IECEX gas certificate	IECEX PRE 14.0001
IECEX gas explosion protection	Ex db eb IIC T6
ATEX gas certificate	Presafe 14 ATEX 4124
ATEX gas explosion protection	Ex II 2 G Ex db eb IIC T6

### Electrical Data

Rated operational voltage AC	230 V
Rated operational current	16 A (T6)
Measuring range	-20 to 50 °C

### Output

Max. output AC load condition	L-2 16 (2.5) A cos φ 1 (0.6) L-4 2 (0.4) A cos φ 1 (0.6)
-------------------------------	---

### Ambient Conditions

Ambient temperature	-50 °C ... +50 °C
---------------------	-------------------

### Mechanical Data

Degree of protection (IP)	IP66 / IP67
Enclosure material	Stainless steel 1.4404, Electropolished
Contacts	1 change-over contact
Capillary tube diameter	6/1.5 mm
Capillary tube length	1 m
Weight	1.11 kg
Weight	2.44 lb

### Components

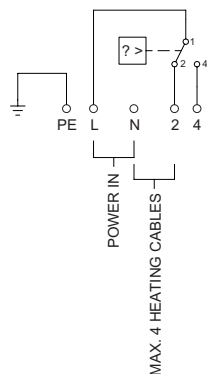
Drilled holes	8 x M25
Cable glands and entries	1 x M25 Ø 13 ... 17 mm
Material cable gland	Brass

TEF10582580 Art. No. 259553

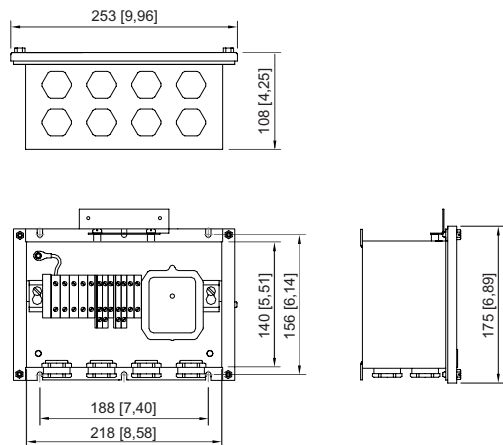
**Components**

Stopping plugs	8 x M25 x 1.5
Stopping plug material	Brass
Breather	M25
Entry 1	1 x Brass cable glands E204//622/D9 M25 Ø 13 ... 17 mm
Entry 2	8 x Stopping plug Brass M25 x 1,5
Entry 3	1 x Breather Brass M25 x 1,5
Type of terminals 1	3 x Supply 2-conductor, 10 mm <sup>2</sup> , grey
Type of terminals 2	5 x Output terminal 2-conductor, 2.5 mm <sup>2</sup> , grey
Type of terminals PE 1	4 x Phoenix USLKG 2-conductor, 10 mm <sup>2</sup> , green-yellow
Accessories	Included in delivery

**Technical Drawings – Subject to Alterations**



**Dimensional Drawings (All Dimensions in mm [inches]) – Subject to Alterations**



TEF10582580 Art. No. 259553

## Accessories

Cable gland Ex e		Art. No.
	TEF6222512 E204/622 M25/D1/9 mm (Ø 15 – 20.1 mm), with lock nut	259237
	TEF6222532 E204/622 M25/D9/9 mm (Ø 13 – 17 mm), with lock nut	259253
Connection kit COLD, wall mounting		Art. No.
	TEF9179206 5x15 for Raychem cables 8BTV-10BTV-20QTVR-KTV with termination and connection system C25-100	264298
	TEF9179227 5x11 / 5x15 for all Raychem cables with termination and connection system C25-100	264288
Connection kit HOT, wall mounting		Art. No.
	TEF9179204 5x15 for Raychem cables 8BTV-10BTV-20QTVR-KTV with termination and connection system C25-21	264297
	TEF9179224 5x11 for Raychem cables 3BTV-5BTV-10QTVR-15QTVR-XTV-VPL-HTV with termination and connection system C25-21	264293
	TEF9179228 5x11 / 5x15 for all Raychem cables with termination and connection system C25-21	264289
Termination kit COLD, wall mounting		Art. No.
	TEF9179226 5x11 for Raychem cables 3BTV-5BTV-10QTVR-15QTVR-XTV-VPL-HTV with termination and connection system C25-100	264295

We reserve the right to make alterations to the technical data, dimensions, weights, designs and products available without notice. The illustrations cannot be considered binding.