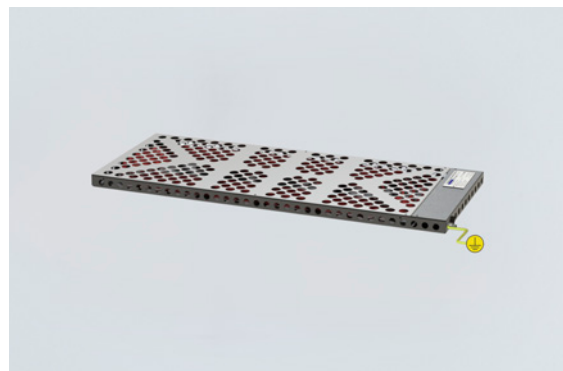


TEF92095002 Art. No. 262982



- Low profile, easy to fit inside cabinets
- Self-regulating heating element. Prevents overheating
- Rugged AISI 316L, acid steel construction
- Low maintenance
- For use inside equipment enclosures and cabinets to prevent condensation and provide climatic control
- Frost protection

**MY R. STAHL T9209A**



Globally approved Ex e, self regulating enclosure heater. AISI 316L acid resistant steel enclosure. With connection line for electrical connection. Delivered with power output from 50 W up to 300 W at 0 °C.

**Technical Data**

**Explosion Protection**

|                                |                          |
|--------------------------------|--------------------------|
| Application range (zones)      | 1<br>2                   |
| IECEX gas certificate          | IECEX NEM 11.0005X       |
| IECEX gas explosion protection | Ex e IIC T4 Gb           |
| ATEX gas certificate           | NEMKO 11ATEX1098X        |
| ATEX gas explosion protection  | Ex II 2 G Ex e IIC T4 Gb |

**Electrical Data**

|                              |            |
|------------------------------|------------|
| Rated operational voltage AC | 120 V      |
| Power                        | 175 W      |
| Frequency range              | 50 – 60 Hz |

**Ambient Conditions**

|                     |                                   |
|---------------------|-----------------------------------|
| Ambient temperature | -50 °C ... +50 °C (Under voltage) |
| Storage temperature | -50 °C ... +80 °C                 |

**Mechanical Data**

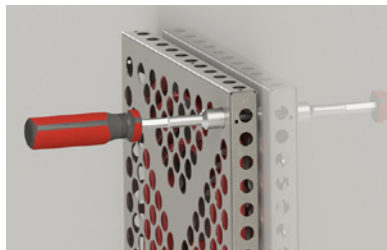
|                           |                        |
|---------------------------|------------------------|
| Degree of protection (IP) | IP66                   |
| Degree of protection note | For use in enclosures  |
| Enclosure material        | Stainless steel 1.4404 |
| Type of connection cable  | 2 x 2.5 + PE           |
| Cable length              | 1.5 m                  |
| Dimension A               | 280 mm                 |
| Dimension B               | 700 mm                 |
| Dimension C               | 30 mm                  |
| Dimension D               | 590 mm                 |
| Dimension E               | 240 mm                 |
| Weight                    | -                      |

TEF92095002 Art. No. 262982

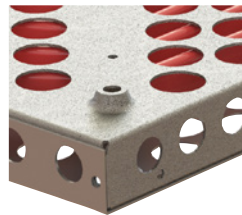
**Technical Drawings – Subject to Alterations**



Hold the heater close to the installation surface, and insert the M6 screws in each of the 4 mounting holes.

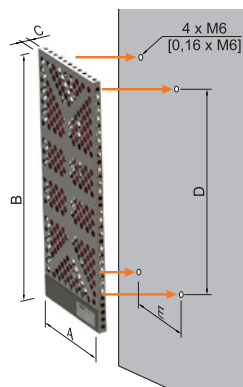


Use a tool to tighten the screws firmly to secure the heater.



4 x Ø 6 mm mounting holes on the rear side of the heater

**Dimensional Drawings (All Dimensions in mm [inches]) – Subject to Alterations**



| Nominal output <sup>*)</sup> | Overall dimensions |     |    | Mounting dimensions |     |      | Length connection line |
|------------------------------|--------------------|-----|----|---------------------|-----|------|------------------------|
|                              | A                  | B   | C  | D                   | E   |      |                        |
| 50 W                         | 200                | 300 | 30 | 190                 | 160 | 2 kg | 1 m                    |
| 100 W                        | 240                | 550 | 30 | 440                 | 200 | 3 kg | 1 m                    |
| 175 W                        | 280                | 700 | 30 | 590                 | 240 | 5 kg | 1.5 m                  |
| 300 W                        | 360                | 870 | 30 | 760                 | 320 | 8 kg | 1.5 m                  |

<sup>\*)</sup> Note: Nominal output at still air at 0 °C

We reserve the right to make alterations to the technical data, dimensions, weights, designs and products available without notice. The illustrations cannot be considered binding.