

Control and signalling devices

Control device for panel mounting

Ex e

8003/131-010S Art. No. 269837



PanSiG



- Flexible configuration thanks to pushbutton, mushroom push-button, mushroom stay-put button, mushroom stay-put button with key lock, key-operated button and key-operated switch
- Easy to install using a single hole
- Codable "latching", "spring return" and "key not removable" functions
- Spring clamp terminals with connection chamber

MY R. STAHL 8003B



R. STAHL Series 8003 switches and control buttons for panel mounting take on various switching functions in latching and spring return positions up to 6 A, which can be subsequently recoded. They are fully certified, explosion-protected equipment with an Ex e connection chamber. With the patented mounting mechanism, panel mounting with drilled holes or openings of 30.5 mm is quick and easy.

Compatible actuators are available for a comprehensive range of applications.

Technical Data

Explosion Protection

| | |
|---------------------------------|--|
| Scope of validity | European Union (ATEX) IECEX CCC |
| Application range (zones) | 1 2 21 22 |
| IECEX gas certificate | IECEX PTB 06.0065X |
| IECEX gas explosion protection | Ex db eb IIC T6 Gb |
| IECEX dust certificate | IECEX PTB 06.0065X |
| IECEX dust explosion protection | Ex tb IIIC T80 °C Db |
| ATEX gas certificate | PTB 02 ATEX 1057 X |
| ATEX gas explosion protection | ⊕ II 2 G Ex db eb IIC T6 Gb |
| ATEX dust certificate | PTB 02 ATEX 1057 X |
| ATEX dust explosion protection | ⊕ II 2 D Ex tb IIIC T80 °C Db |
| Certificates | ATEX (PTB), IECEX (PTB), Korea (KGS) |
| Declaration of Conformity | ATEX (EUK), China (CCC), Declaration of Conformity (ATEX) |
| Notes | Product label may vary. Series devices are labelled with ATEX and IECEX. |

Electrical Data

| | |
|--|----------------------------|
| Rated operational voltage AC | 500 V |
| Rated operational current | 6 A |
| Switching capacity AC-12 | 500 V / 6 A / max. 3000 VA |
| Switching capacity AC-15 | 400 V / 6 A / max. 1250 VA |
| Switching capacity DC-13 | 110 V / 1 A / max. 110 W |
| Switching capacity DC-13 2 contact elements in series | 60 V/6 A |

Control and signalling devices

Control device for panel mounting

Ex e

8003/131-010S Art. No. 269837



Ambient Conditions

| | |
|---------------------|--------------------|
| Ambient temperature | -55 °C ... +60 °C |
| Ambient temperature | -67 °F ... +140 °F |

Mechanical Data

| | |
|---------------------------------------|------------------------------------|
| Degree of protection (IP) (IEC 60529) | Reverse side IP65, front side IP66 |
| Enclosure material | Polyamide |
| Contact material | Silver-nickel |
| Silicone-free | No |
| Number of NOs | 2 |
| Connection cross-section | 0.75 ... 1.5 mm ² |
| Connection cross-section AWG | 18 AWG ... 12 AWG |
| Depth of cut-out | 130 mm |
| Mounting depth, inches | 5.12 in |
| Service life, min. | 10 ⁸ operating cycles |
| Weight | 125 g |
| Weight | 0.28 lb |

Mounting / Installation

| | |
|--------------------------|--------------|
| Tightening torque | 3 Nm |
| Tightening torque lbf in | 26.55 lbf in |

Components

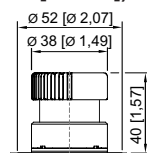
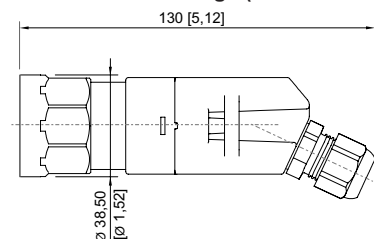
| | |
|--------------|----------------------------------|
| Actuator | Mushroom stay-put button EM-STOP |
| Entry 1 | 8161/7-M16-0902 |
| Entry 1 type | Polyamide cable gland, black |

Technical Drawings – Subject to Alterations

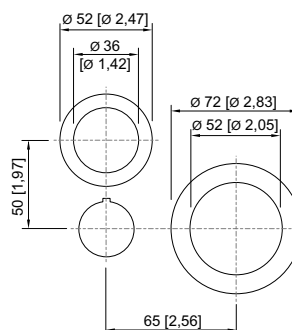


Schematic 8003/13.
NO

Dimensional Drawings (All Dimensions in mm [inches]) – Subject to Alterations



8003/...-010, 8003/...-012 mushroom stay-put button
dia. 38 mm



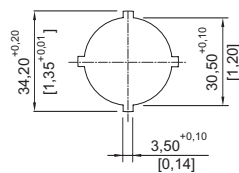
8003/...-009, 8003/...-010, 8003/...-015
cut-out for EMERGENCY STOP button

Control and signalling devices

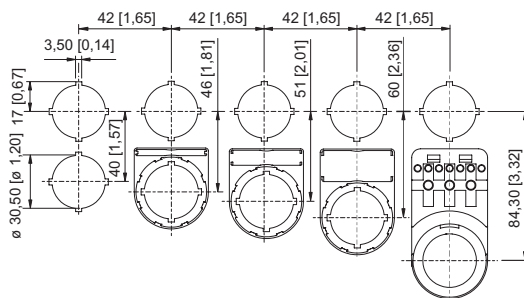
Control device for panel mounting

Ex e

8003/131-010S Art. No. 269837



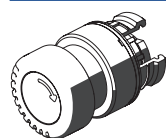
Punch pattern



Cut-out with/without additional designation plate

Accessories

Actuators



Mushroom stay-put button EM-STOP

Art. No.

261756

Spare Parts

Label holder



Label holder, size 1, without insert disc
Labelling: 1-line
can be installed in dia. 30.5 mm drilled holes for actuators

Art. No.

155632



Label holder, size 2, without insert disc
Labelling: 1- or 2-line
can be installed in dia. 30.5 mm drilled holes for actuators

155687



Label holder, size 3, without insert disc
Labelling: 1-, 2- or 3-line
can be installed in dia. 30.5 mm drilled holes for actuators

155844

Label, yellow, general



for Ø 39 actuator (EM-STOP)

Art. No.

223571

Protective collar



8602A0751 metal
for pushbutton/selector switch/mushroom stay-put button with key lock/mushroom stay-put button/mushroom pushbutton dia. 39
BG001, BG003, BG005, BG008, BG009, BG010, BG012

Art. No.

155326

Control and signalling devices

Control device for panel mounting


Ex e

8003/131-010S Art. No. 269837






Designation plates for pushbuttons and selector switches

Art. No.

| | | |
|--|------------------------------|--------|
|  | Colour: Red Symbol: Arrow | 155567 |
|--|------------------------------|--------|


Insert discs for label holder

Art. No.

| | | |
|--|--|--------|
|  | One-line Plain Material: PVC Colour: White Self-adhesive | 238271 |
|  | Two-line Plain Material: PVC Colour: White Self-adhesive | 238272 |
|  | Three-line Plain Material: PVC Colour: White Self-adhesive | 238273 |

Closing part

Art. No.

| | | |
|--|---|--------|
|  | 8602C3-733-B for closing unused holes in cover, dia. 30.5 mm, NBR | 244306 |
| | 8602C3-733-S for closing unused holes in cover, dia. 30.5 mm, silicone | 244307 |

We reserve the right to make alterations to the technical data, dimensions, weights, designs and products available without notice. The illustrations cannot be considered binding.