

Control and signalling devices

Control devices for panel mounting

Ex e

8003/111-008-2-r-MS4 Art. No. 270053



PanSiG



- Flexible configuration thanks to pushbutton, mushroom push-button, mushroom stay-put button, mushroom stay-put button with key lock, key-operated button and key-operated switch
- Easy to install using a single hole
- Codable "latching", "spring return" and "key not removable" functions
- Spring clamp terminals with connection chamber

MY R. STAHL 8003B



R. STAHL Series 8003 switches and control buttons for panel mounting take on various switching functions in latching and spring return positions up to 6 A, which can be subsequently recoded. They are fully certified, explosion-protected equipment with an Ex e connection chamber. With the patented mounting mechanism, panel mounting with drilled holes or openings of 30.5 mm is quick and easy.

Compatible actuators are available for a comprehensive range of applications.

Technical Data

Explosion Protection

Area of application	European Union (ATEX) IECEX CCC
Application range (zones)	1, 2, 21, 22
IECEX gas certificate	IECEX PTB 06.0065X
IECEX gas explosion protection	Ex db eb IIC T6 Gb
IECEX dust certificate	IECEX PTB 06.0065X
IECEX dust explosion protection	Ex tb IIIC T80 °C Db
ATEX gas certificate	PTB 02 ATEX 1057 X
ATEX gas explosion protection	⊕ II 2 G Ex db eb IIC T6 Gb
ATEX dust certificate	PTB 02 ATEX 1057 X
ATEX dust explosion protection	⊕ II 2 D Ex tb IIIC T80 °C Db
Certificates	ATEX (PTB), China (CQST), IECEX (PTB), Korea (KGS)
Declaration of conformity	ATEX (EUK), China (CCC)
Notes	Product label may vary. Series devices are labelled with ATEX and IECEX.

Electrical Data

AC rated operational voltage	500 V
Rated operational current	6 A
Rated operational current	6 A
Switching capacity AC-12	500 V / 6 A / max. 3000 VA
Switching capacity AC-15	400 V / 6 A / max. 1250 VA
Switching capacity DC-13	110 V / 1 A / max. 110 W
Switching capacity DC-13 2 contact elements in series	60 V/6 A

Ambient Conditions

Ambient temperature	-20 °C ... 60 °C
---------------------	------------------

Control and signalling devices

Control devices for panel mounting



Ex e

8003/111-008-2-r-MS4 Art. No. 270053

Ambient Conditions

Ambient temperature -4 °F ... +140 °F

Mechanical Data

Degree of protection (IP) (IEC 60529) Reverse side IP65, front side IP66

Enclosure material Polyamide

Contact material Silver-nickel

Silicone-free Yes

Number of NCs 1

Number of NOs 1

Number of switching positions 2

Connection cross-section 0.75 ... 1.5 mm²

Connection cross-section AWG 18 AWG ... 12 AWG

Mounting depth 130 mm

Mounting depth in inches 5.12 in

Service life, min. 10⁵ operating cycles

Weight 230 g

Mounting / Installation

Tightening torque 3 N · m

Tightening torque lbf in 26.55 lbf in

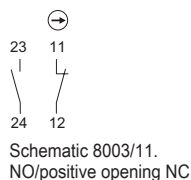
Components

Actuator Key-operated switch actuator With key actuator MS4

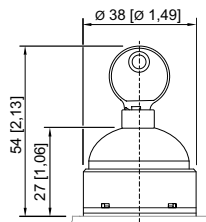
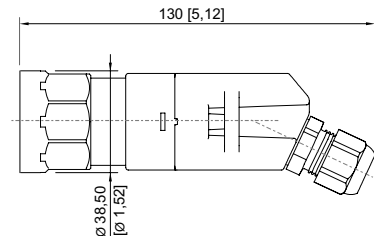
Entry 1 8161/7-M16-0902

Entry 1 type Polyamide cable gland, black

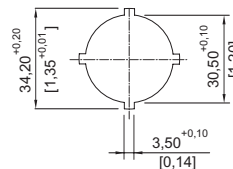
Technical Drawings – Subject to Alterations



Dimensional Drawings (All Dimensions in mm [inches]) – Subject to Alterations



8003/...-008 key-operated switch



Punch pattern

Control and signalling devices

Control devices for panel mounting



Ex e

8003/111-008-2-r-MS4 Art. No. 270053



Cut-out with/without additional designation plate

Accessories

Actuators



for key-operated switches with two switching positions, MS4 with 2 keys

Art. No.

272934

Closing part



8602C3-733-B
for closing unused holes in cover, dia. 30.5 mm, NBR

8602C3-733-S
for closing unused holes in cover, dia. 30.5 mm, silicone

Art. No.

244306

244307

Spare Parts

Label holder



Label holder, size 1, without insert disc
Labelling: 1-line
can be installed in dia. 30.5 mm drilled holes for actuators

Art. No.

155632



Label holder, size 2, without insert disc
Labelling: 1- or 2-line
can be installed in dia. 30.5 mm drilled holes for actuators

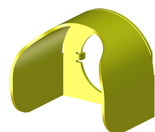
155687



Label holder, size 3, without insert disc
Labelling: 1-, 2- or 3-line
can be installed in dia. 30.5 mm drilled holes for actuators

155844

Protective collar



8602A0751 metal
for pushbutton/selector switch/mushroom stay-put button with key lock/mushroom stay-put button/mushroom pushbutton dia. 39
BG001, BG003, BG005, BG008, BG009, BG010, BG012

Art. No.

155326

Control and signalling devices




Control devices for panel mounting



Ex e

8003/111-008-2-r-MS4 Art. No. 270053

Spare key		Art. No.
	Closing MS4	272647

Insert discs for label holder		Art. No.
	One-line Plain Material: PVC Colour: White Self-adhesive	238271
	Two-line Plain Material: PVC Colour: White Self-adhesive	238272
	Three-line Plain Material: PVC Colour: White Self-adhesive	238273

Conversion kit for key-operated switch		Art. No.
	Coding element, 1 x red, 1 x green	155403
	Coding element, 1 x yellow, 1 x red	155432
	Coding element, 2 x yellow	155373

We reserve the right to make alterations to the technical data, dimensions, weights, designs and products available without notice. The illustrations cannot be considered binding.