

# Lighting

## Linear luminaire With LED

GRP

6402/4148-6100-152-1110-11-8400 Art. No. 270199

STAHL



- State-of-the-art LED technology with high luminous efficacy and long service life
- Extremely high luminaire efficacy
- Luminous flux after 100,000 h still 90% of the starting luminous flux
- Optionally with DALI for controlling and monitoring the luminaire
- Optionally with address modules for directly actuation of a common battery system

MY R. STAHL 6402C



The linear luminaire with Series 6402/4 LED is ideal for lighting surfaces at a mounting height of up to 10 m. It can also be used to illuminate equipment and objects, both inside and outside. The pole mounting sleeve accessory can be used to easily mount the luminaire on poles. Optionally, the luminaire can be equipped with an address module. It can be used to control and monitor the luminaire for the common battery systems.

### Technical Data

#### Explosion Protection

Ex version	Yes
Application range (zones)	2 21 22
IECEX gas certificate	IECEX IBE 14.0080
IECEX gas explosion protection	Ex ec IIC T4 Gc
IECEX dust certificate	IECEX IBE 14.0080
IECEX dust explosion protection	Ex tb op is / tc IIIC T100 °C Db
ATEX gas certificate	IBEx U 14 ATEX 1292
ATEX gas explosion protection	⊕ II 3 G Ex ec IIC T4 Gc
ATEX dust certificate	IBEx U 14 ATEX 1292
ATEX dust explosion protection	⊕ II 2 D Ex tb op is / tc IIIC T100 °C Db
Certificates and approvals	ATEX IECEX UKEX
Certificates	ATEX (IBE), IECEX (IBE)
Declaration of Conformity	ATEX (EUK), Declaration of Conformity (AUS)

#### Electrical Data

Rated operational voltage AC	100 – 240 V
Rated operational voltage DC	110 ... 250 V
Frequency range	50 – 60 Hz

#### Lighting Data

Number of lamps	1
Lamp wattage	42 W
Lamp	LED
Light colour	4000 K – warm neutral white
Light distribution	120°x120° with diffusing glass

# Lighting

## Linear luminaire With LED

### GRP

6402/4148-6100-152-1110-11-8400 Art. No. 270199



#### Lighting Data

Luminaire efficacy	138 lm/W
Luminous flux	5810 lm
Colour rendering	≥ 80
Colour temperature	4000 K

#### Ambient Conditions

Ambient temperature	-40 °C ... +55 °C (T100 °C) Note: Through wiring Max. 3x16 A -40 °C ... +60 °C (T100 °C) Note: Through wiring 2 Max. 3x10 A
---------------------	--

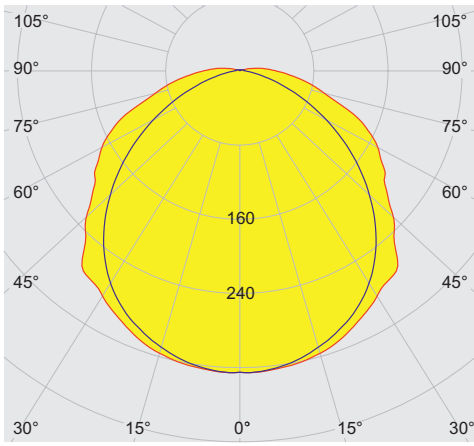
#### Mechanical Data

Version	Standard
IP degree of protection (IEC 60598)	IP66/IP67
Enclosure material	Polyester resin, Glass fibre reinforced
Enclosure colour	Light grey (RAL 7035)
Diffuser	With diffuser
Sealing material	Silicone
Silicone-free content	Contains silicone
Translucent cover material	Polycarbonate
Installed terminal strip	PE + N + L1 + L2 + L3
Max. solid connection terminals	6 mm <sup>2</sup>
Max. finely stranded connection terminals	4 mm <sup>2</sup>
Type of connection cable	Finely stranded Solid
Size	4
Width	184 mm
Height	125 mm
Length	1310 mm
Impact strength (IEC 62262)	IK10
Weight	5.6 kg
Weight	12.35 lb
Disconnection of the luminaire	No

#### Components

Threaded plate	2x plastic
Ballast	VG Luxtronic 40 W 300 mA
Through wiring	With 5 conductors 2.5 mm <sup>2</sup>
Drilled holes	3 x M25
Cable glands and entries	2 x M25 Ø 7 ...
Material cable gland	Polyamide, black
Stopping plugs	2 x M25 x 1.5
Stopping plug material	Polyamide, black
Accessories	Provided

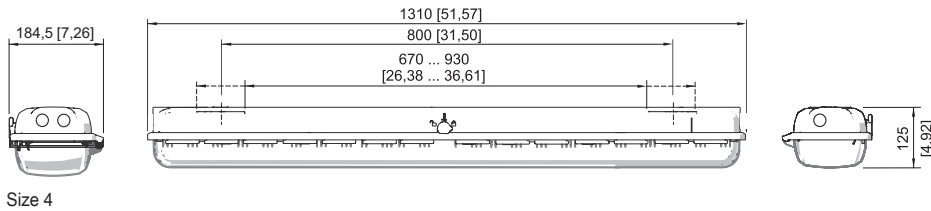
#### Light Distribution Curves



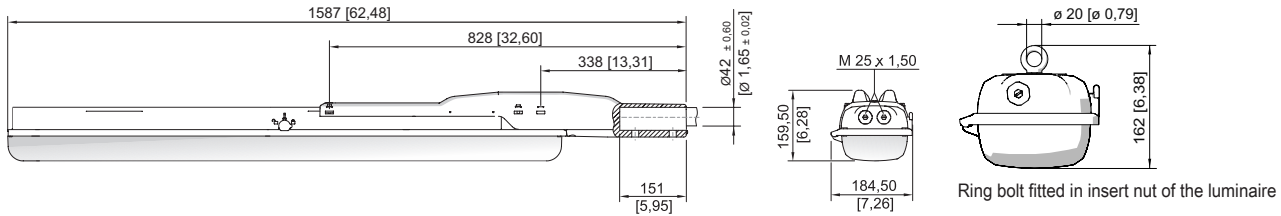
cd/klm 100%  
 — C0 - C180 — C90 - C270

typical with diffuser, clear translucent cover

#### Dimensional Drawings (All Dimensions in mm [inches]) – Subject to Alterations

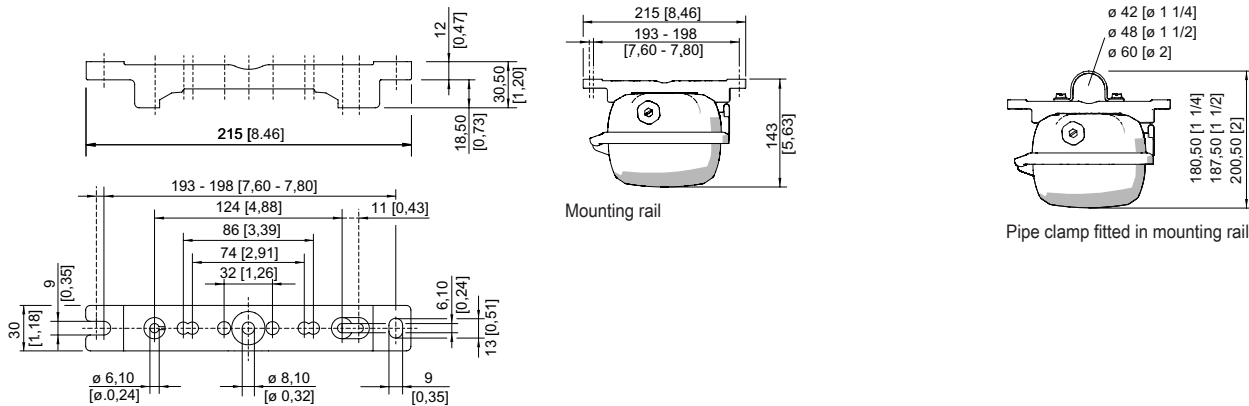


Size 4



Ring bolt fitted in insert nut of the luminaire

Size 4



Mounting rail

Pipe clamp fitted in mounting rail

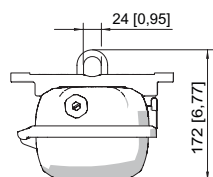
Mounting rail

# Lighting

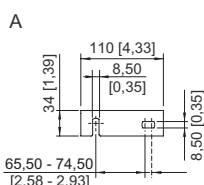
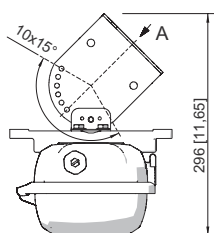
## Linear luminaire With LED

### GRP

6402/4148-6100-152-1110-11-8400 Art. No. 270199



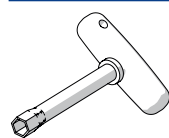
Mounting bracket fitted in mounting rail



Wall mounting bracket fitted in mounting rail

## Accessories

### Box spanner

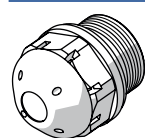


M8 / A/F 13;  
For actuating the central lock

Art. No.

222430

### Breather



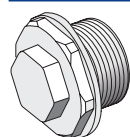
Thread: M25 x 1.5; 20 pc; for installation in lights; in moulded material; without counter nut

Thread: M25 x 1.5 (20 pieces); without jam nut

Art. No.

138576

285780



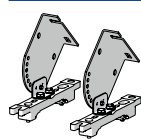
Thread: M25 x 1.5 (1 piece); for installation in light fittings; made from stainless steel; without jam nut

Thread: M25 x 1.5 (1 piece); for installation in light fittings; made from stainless steel; without jam nut

296608

296608

### Ceiling and wall mounting bracket

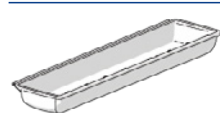


mounted on a mounting rail for a variable mounting distance; Material: stainless steel; Lamp can be swiveled in steps of 15°; 1 pair

Art. No.

222827

### Cover



For size 4 luminaires (diffuse), when used on an emergency luminaire with individual power supply, the visibility of the display LED may be restricted

Art. No.

276670

### Holder for translucent cover



The fall prevention system for the light fitting cover prevents the light fitting cover from falling accidentally when the light fitting is opened.

Art. No.

226791

# Lighting

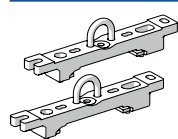
## Linear luminaire With LED

GRP

6402/4148-6100-152-1110-11-8400 Art. No. 270199

STAHL

### Mounting bracket

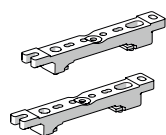


mounting clamp mounted on a mounting rail for a variable mounting distance; 1 pair

Art. No.

222456

### Mounting rail

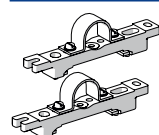


for a variable mounting distance; 1 pair

Art. No.

222826

### Pipe clamp



R 1 1/2"; with mounting rail for a variable mounting distance; material: stainless steel; 1 pair

R 1 1/4"; with mounting rail for a variable mounting distance; Material: stainless steel; 1 pair

R 2"; with mounting rail for a variable mounting distance; Material: stainless steel; 1 pair

Art. No.

222459

222458

222460

### Pole mounting sleeve



for the subsequent mounting on lights size 2 and size 4, completely with assembly parts (for pipe diameter 42 mm)

Art. No.

227512

### Ring bolt



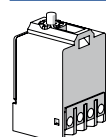
M8, direct mounting in insert nuts; 1 pair

Art. No.

115736

## Spare Parts

### Contact element

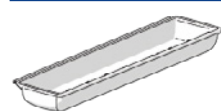


8080/1-3-L 2 NC contact element

Art. No.

132527

### Cover

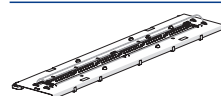


for luminaire size 4

Art. No.

222428

### Reflector Plate



Spare part for 6402 or upgrade 6401 size 4, colour temperature 4000 K

Art. No.

272071

We reserve the right to make alterations to the technical data, dimensions, weights, designs and products available without notice. The illustrations cannot be considered binding.