

Signalling Devices



Visual signalling device LED continuous beacon

In flameproof enclosure

FX15/C-D-060-R-EN-SF-A-ST-00-00-PE Art. No. 270099



- Lamp: Flashing beacon – XENON (5 J) / continuous beacon – LED (6.5 W)
- Type of protection: Ex d
- Class: IP66/IP67 (IEC 60529 / NEMA 4X)
- Corrosion-resistant GRP enclosure
- Stainless steel protection cage included
- 8 light-intensifying Fresnel lens colours available to order
- Low weight (2.25 kg)

Webshop FX15A



Product series FX15 provides visual signals from a continuous beacon with an LED or a 5 J flashing beacon with xenon flashes. The enclosure is made of glass fibre reinforced polyester. The product series is intended for use in hazardous areas and harsh environments.

Technical Data

Explosion Protection

| | | |
|---------------------------------|-----------------------------------|----------------------------------|
| Scope of validity | IECEX European Union | |
| Application range (zones) | 1 2 21 22 | |
| IECEX gas certificate | IECEX BAS 13.0003 | |
| IECEX gas explosion protection | Ex d IIC T6 Gb | |
| IECEX dust certificate | IECEX BAS 13.0003 | |
| IECEX dust explosion protection | Ex tb IIIC T85 °C Db | |
| ATEX gas certificate | Baseefa 13 ATEX 0006 | |
| ATEX gas explosion protection | ⊕ II 2 G Ex d IIC T6 Gb | |
| ATEX dust certificate | Baseefa 13 ATEX 0006 | |
| ATEX dust explosion protection | ⊕ II 2 D Ex tb IIIC T85 °C Db | |
| PESO gas certificate | P423228/4 | |
| PESO gas explosion protection | Ex d IIC T6 Gb | |
| Certificates | ATEX (BAS), IECEX (BAS) | |
| Declaration of Conformity | ATEX (EUK), China (CCC) | |
| Temperature class | Max. surface temperature T | Ambient temperature range |
| T6 | 85 °C | -60 °C ... +70 °C |
| | | ... |
| | | ... |

Electrical Data

| | |
|------------------------------|------------|
| Rated operational voltage DC | 24 V |
| Power | 2.6 W |
| Tolerance | -10 – 10 % |

Signalling Devices



Visual signalling device LED continuous beacon

In flameproof enclosure

FX15/C-D-060-R-EN-SF-A-ST-00-00-PE Art. No. 270099

Lighting Data

| | |
|------------------------------|-------|
| Lamp | LED |
| Effective luminous intensity | 37 cd |
| Luminous flux | 44 lm |

Ambient Conditions

| | |
|-----------------------|------------------------|
| Ambient temperature | -60 °C ... +70 °C (T6) |
| Operating temperature | -60 °C ... +50 °C |

Mechanical Data

| | |
|---|---|
| Degree of protection (IP) | IP66 |
| Degree of protection (IP) (IEC 60529) | IP66/IP67 |
| Enclosure material | Polyester (GRP), Glass fibre reinforced |
| Enclosure colour | Black |
| Sealing material | Red silicone 70 |
| Material dome | Polycarbonate, prismatic |
| Wire guard material | Stainless steel |
| Max. solid connection terminals | 2.5 mm ² |
| Max. finely stranded connection terminals | 2.5 mm ² |
| Type of connection cable | Finely stranded Solid |
| Width | 137 mm |
| Height | 239 mm |
| Length | 148 mm |
| Lens colour | Red |
| Seal | O-ring seal |
| Weight | 2.23 kg |
| Weight | 4.92 lb |

Mounting / Installation

| | |
|------------------------|-----------------|
| Connection type | Screw terminal |
| Mounting part material | Stainless steel |

Components

| | |
|--------------------------|-------------------------------|
| Drilled holes | 3 x M20 |
| Cable glands and entries | Can be ordered as accessories |
| Stopping plugs | 3 x dust cap |
| Wire guard | Yes |

Signalling Devices

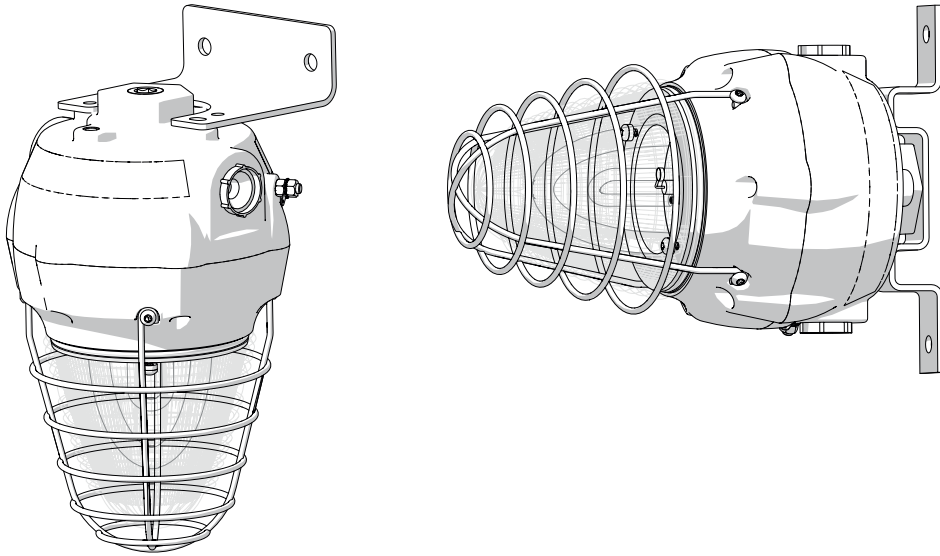
Visual signalling device LED continuous beacon

In flameproof enclosure

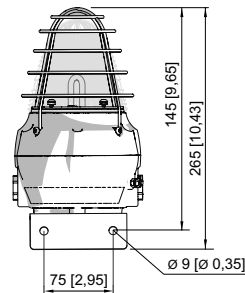
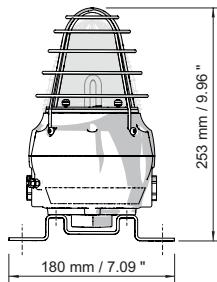
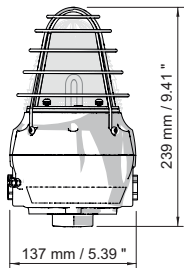
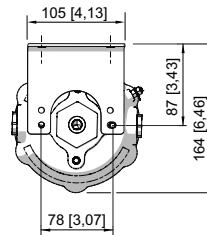
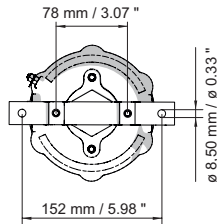
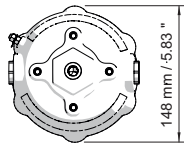
FX15/C-D-060-R-EN-SF-A-ST-00-00-PE Art. No. 270099



Technical Drawings – Subject to Alterations



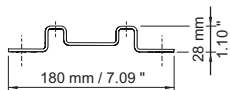
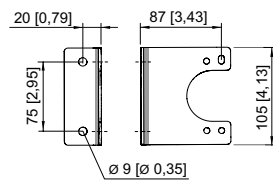
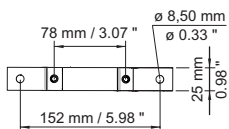
Dimensional Drawings (All Dimensions in mm [inches]) – Subject to Alterations



FX15 Beacon

FX15 Beacon with backstrap bracket

FX15 Beacon with L-bracket



L-bracket

Backstrap bracket

Accessories

Metal cable gland

Art. No.



Signalling Devices



Visual signalling device LED continuous beacon


In flameproof enclosure

FX15/C-D-060-R-EN-SF-A-ST-00-00-PE Art. No. 270099

| | | |
|--|---|--------|
|  | Ex d & Ex e cable entry with compound for all types of armoured cables (SWA, braided, tape) (nickel-plated brass) Type 20PX2K, M20 x 1.5 | 109428 |
| | Ex d & Ex e Cable entry with RapidEx sealing system for all types of unarmoured and braid armour cables (nickel-plated brass) Type 20PX2K-REX, M20 x 1.5 | 246649 |
|  | Ex d & Ex e Cable entry with RapidEx sealing system for all types of unarmoured and braid armour cables (nickel-plated brass) Type 20PXSS2K-REX, M20 x 1.5 | 246605 |


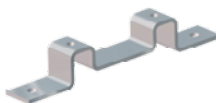
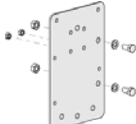


Stopping plugs

Art. No.

| | | |
|--|---|--------|
|  | Stopping plug made of stainless steel M20x1,5 with external hexagon | 251101 |
|--|---|--------|

Mounting accessories

Art. No.

| | | |
|--|--|--------|
|  | Stainless steel L-bracket; standard – see dimensional drawings | 221711 |
| | Stainless steel L-bracket, long version | 247371 |
|  | Stainless steel fastening bracket | 221712 |
|  | Adapter plate for pipe clamp fastening | 256519 |
|  | Stainless steel sun shield | 262077 |
|  | Pipe clamp, R 1 1/4" | 120812 |
| | Pipe clamp, R 1 1/2" | 120819 |
| | Pipe clamp, R 2" | 120823 |

We reserve the right to make alterations to the technical data, dimensions, weights, designs and products available without notice. The illustrations cannot be considered binding.