

Components for system solutions

Compact mldd case crct breaker

125 A

8550/1-MCCB-GLS3-TM-125-95-000-000-0000 Art. No. 287846



- Non-adjustable thermal and magnetic releases
- Isolating function in accordance with EN 60947-2
- International approvals for worldwide use
- Simple replacement or expansion of your system thanks to a modular circuit breaker design
- Padlocks provide protection against being switched on again during maintenance work
- Ergonomically shaped operating lever guarantees that the system can be switched on and off safely
- Large cable dia. range of the main terminals

MY R. STAHL 8550A



R. STAHL Series 8550 molded case circuit breakers boast a broad range of rated operating currents from 15 to 125 A, as well as excellent current limiting for short circuits and a high switching capacity of up to 10 kA, depending on the switched voltage. The short-circuit release threshold is ten times the nominal current. DC currents can also be switched at voltages up to 250 V DC. The components are designed to be modular and are therefore ideal for combining with the contactor, also available in this series, and overload relay to form a motor starter. Other applications are in power distribution boards.

Technical Data

Explosion Protection

| | |
|--------------------------------|--|
| Application range (zones) | 1, 2 |
| Application range (Zone) note | For use in Zone 21/22 when protected by Ex tb/tc enclosure |
| IECEx gas explosion protection | Ex db eb IIC Gb |
| ATEX gas explosion protection | Ⓔ II 2 G Ex db eb IIC Gb |
| FMus certificate | FM22US0011U |
| cFM certificate | FM22CA0006U |
| Marking FMus | Class I, Div. 2, Groups A,B,C,D; Class I, Zone 1, AEx db eb IIC Gb; |
| Marking cFM | Class I, Zone 1, Ex db eb IIC Gb; Class I, Div. 2, Groups A,B,C,D; |
| Certificates | ATEX (FM), Brazil (ULB), Canada (FM), IECEx (FM), USA (FM) |

Electrical Data

| | |
|---|-------------------|
| Rated operational voltage AC | 12 ... 690 V |
| AC rated operat. voltage (NEC) | 12 ... 600Y/347 V |
| Rated operational voltage DC | 12 ... 250 V |
| Rated operational voltage DC (NEC) | 12 ... 250 V |
| Rated operational current | 125 A |
| Frequency range | 50 – 60 Hz |
| Electrical service life | 8000 |
| Mechanical service life | 10 ⁴ |
| Rated impulse voltage Uimp | 8 kV |
| Main contacts | 3-pole (3 NO) |
| 1st auxiliary function | without |
| 1st auxiliary function for AC rated voltage | - |
| 1st auxiliary function voltage max. DC | - |

Components for system solutions

Compact mldd case crct breaker

125 A

8550/1-MCCB-GLS3-TM-125-95-000-000-0000 Art. No. 287846



Electrical Data

| | |
|---|-----------|
| 1st auxiliary function for rated current max. | - |
| 2nd auxiliary function | without |
| 2nd auxiliary function voltage AC | - |
| 2nd auxiliary function voltage max. DC | - |
| 2nd auxiliary function for rated current max. | 0 A |
| 3rd auxiliary function | without |
| Tripping time | 0 – 10 ms |

Ambient Conditions

| | |
|------------------------|--------------------|
| Ambient temperature | -25 °C ... +70 °C |
| Ambient temperature °F | -13 °F ... +158 °F |

Mechanical Data

| | |
|---|------------------------------|
| Degree of protection (IP) | IP20 |
| Enclosure material | Thermoplast |
| Connection cross-section | 25 – 95 mm ² |
| Connection cross-section AWG | 4 ... 4/0 AWG |
| Auxiliary contact connection cross section | 0.75 ... 2.5 mm ² |
| Connection cross-section of auxiliary contact AWG | 18 AWG ... 14 AWG |
| Width | 150 mm |
| Width | 150 mm |
| Width, inches | 5.91 in |
| Height | 196 mm |
| Height in inches | 7.72 in |
| Depth | 336.6 mm |
| Depth | 336.6 mm |
| Depth in inches | 13.25 in |
| Weight | 4.3 kg |
| Weight | 9.48 lb |

Mounting / Installation

| | |
|--|----------------------|
| Tightening torque | 15 – 20 N · m |
| Tightening torque | 15 ... 20 N · m |
| Tightening torque lbf in | 132 to 177 lbf in |
| Tightening torque auxiliary contact | 0.4 – 0.6 N · m |
| Tightening torque auxiliary contact | 0.4 ... 0.6 N · m |
| Tightening torque auxiliary contact lbf in | 3.54 ... 5.31 lbf-in |

Components for system solutions

Compact mldd case crct breaker

125 A

8550/1-MCCB-GLS3-TM-125-95-000-000-0000 Art. No. 287846



Technical Drawings – Subject to Alterations



Circuit diagram of the device

Components for system solutions

Compact mldd case crct breaker

125 A

8550/1-MCCB-GLS3-TM-125-95-000-000-0000 Art. No. 287846



Tripping characteristic curves

Components for system solutions

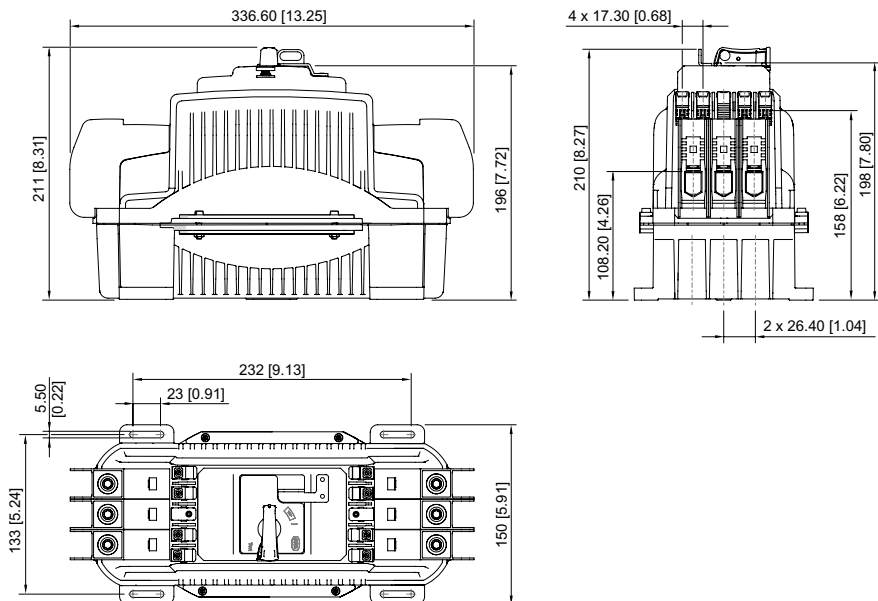
Compact mldd case crct breaker

125 A

8550/1-MCCB-GLS3-TM-125-95-000-000-0000 Art. No. 287846



Dimensional Drawings (All Dimensions in mm [inches]) – Subject to Alterations



We reserve the right to make alterations to the technical data, dimensions, weights, designs and products available without notice. The illustrations cannot be considered binding.