

8550/1-OL-GLS3-E20-80-95-11 Art. No. 287845



- Modular component for monitoring motor overload up to 37 kW/50 hp at 400/480 V
- The electronic relay is not affected by fluctuations in the ambient temperature
- Large cable dia. range of the main terminals
- Trigger class E5, E10, E20 and E30 can be selected via type code
- Integrated earth fault protection
- Wide adjustment range of the overload release from 20 to 80 A
- Integrated reset button and electronic reset via 24 V DC actuation

### MY R. STAHL 8550B



The R. STAHL Series 8550 electronic overload relay is a component for monitoring the load current of motors. It reliably reports an overload and safely shuts off the motor using a contactor. Together with the moulded case circuit breaker in the same series which is also available, these three components form a motor starter which reliably controls powers up to 37 kW/50 hp at 400 or 480 V (other powers available on request). Earth fault protection is also integrated. This means that Ex d and Ex e motors are safely protected at all points. The broad adjustment range of the overload current optimises the variety of versions. Resetting in case of error is either done manually on the unit on-site via the integrated reset button, or electrically via the control system.

## Technical Data

### Explosion Protection

Application range (zones)	1, 2
Application range (Zone) note	For use in Zone 21/22 when protected by Ex tb/tc enclosure
IECEX gas certificate	IECEX FMG 22.0005U
IECEX gas explosion protection	Ex db eb IIC Gb
ATEX gas certificate	FM 22 ATEX 0017 U
ATEX gas explosion protection	Ⓔ II 2 G Ex db eb IIC Gb
FM certificate	FM22US0011U
Marking FMus	CI.I, Div.2, Gps.A,B,C,D CI.I, Zn.1, AEx db eb IIC Gb
cFM certificate	FM22CA0006U
Marking cFM	CI.I, Div.2, Gps.A,B,C,D CI.I, Zn.1, Ex db eb IIC Gb
Certificates	ATEX (FM), Brazil (ULB), Canada (FM), IECEX (FM), USA (FM)

### Electrical Data

Trigger class	Class E20
AC rated operational voltage	690 V
Rated operational current	20 ... 80 A
Frequency	50 ... 60 Hz
Number of main contact poles	3
Number of auxil. contact NCs	1
No. of auxiliary NO contacts	1

### Ambient Conditions

Ambient temperature	-25 °C ... 60 °C
Ambient temperature	-13 °F ... 140 °F

8550/1-OL-GLS3-E20-80-95-11 Art. No. 287845

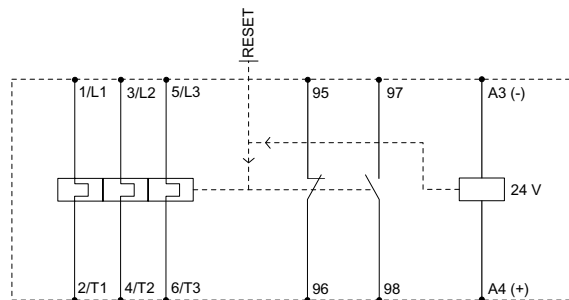
### Mechanical Data

Degree of protection (IP)	IP20
Enclosure material	Thermoplast
Connection cross-section	25 ... 95 mm <sup>2</sup>
Connection cross-section AWG	4 AWG ... 4/0 AWG
Connection cross-section	0.75 ... 2.5 mm <sup>2</sup>
Connection cross-section of auxiliary contact AWG	18 AWG ... 14 AWG
Width	150 mm
Width, inches	5.91 in
Height	196 mm
Height in inches	7.72 in
Depth	336.6 mm
Depth in inches	13.25 in
Weight	4 kg
Weight	8.82 lb

### Mounting / Installation

Tightening torque	15 ... 20 N · m
Tightening torque lbf in	132 lbf-in ... 177 lbf-in
Tightening torque auxiliary contact	0.4 ... 0.6 N · m
Tightening torque auxiliary contact lbf in	3.54 lbf-in ... 5.31 lbf-in

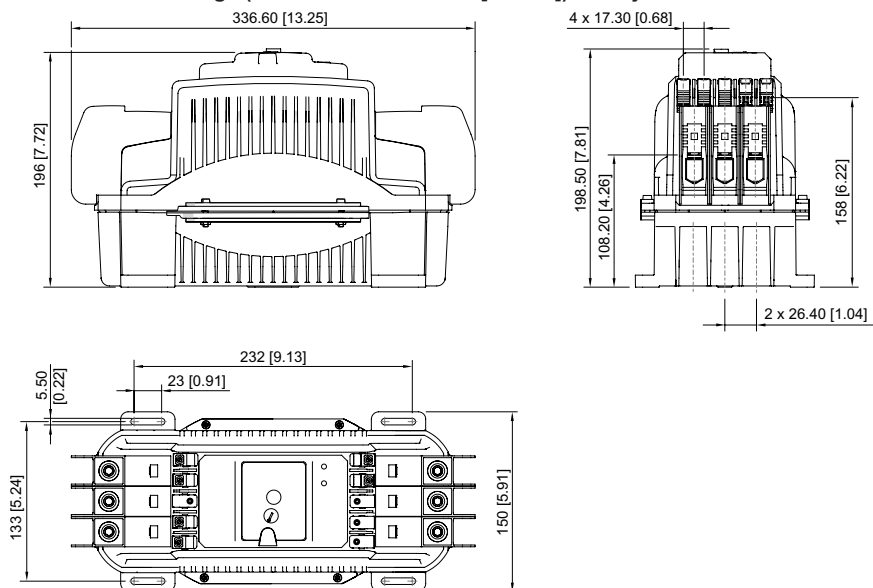
### Technical Drawings – Subject to Alterations



Circuit diagram of the device

8550/1-OL-GLS3-E20-80-95-11 Art. No. 287845

Dimensional Drawings (All Dimensions in mm [inches]) – Subject to Alterations



We reserve the right to make alterations to the technical data, dimensions, weights, designs and products available without notice. The illustrations cannot be considered binding.