

# Surveillance solutions and cameras

## Autofocus Zoom camera 2 MP PTZ dome



EC-962-1 T08-VA4.1K.PS1-L.H-005.N-P Art. No. 338352



- Speed dome PTZ 2MP AXIS camera with high optical zoom (32x)
- Extremely fast and precise pan and tilt drive (0.1° – 350°/s)
- Data protection: 20 customisable 3D privacy masks
- Dome with optimised UV and scratch resistance
- Single-cable solution (PoE+)

MY R. STAHL EC962A



The EC-962-1 is a high-speed dome PTZ camera with 32x optical zoom – ideal for precise area surveillance in chemical and pharmaceutical production and transport environments. Thanks to its extremely fast and accurate pan, tilt, and zoom mechanism, it reliably captures every movement. The camera features 20 individually configurable 3D privacy masks and integrated video analytics for object and person detection. Its robust dome is made of UV- and scratch-resistant special plastic, ensuring consistently clear image quality. As a PoE+ variant, it is suitable for use in hazardous areas classified as Zones 1, 2, 21, and 22.

### Technical Data

#### General

Series	PTZ Dome Camera - EC-962-1
Version	Dome camera
Description	Full HD camera

#### Explosion Protection

Application range (zones)	1, 2, 21, 22
Application range (firedamp protection)	M2
Scope	EU (CE / ATEX) Global (IECEX) United Kingdom (UKCA) United Kingdom (UKEX) Brazil (INMETRO) South Africa (MASC)
IECEX gas certificate	IECEX TUR 18.0023X
IECEX gas explosion protection	Ex db IIC T6 Gb
IECEX dust certificate	IECEX TUR 18.0023X
IECEX dust explosion protection	Ex tb IIIC T80 °C Db
ATEX gas certificate	TÜV 18 ATEX 8218 X
ATEX gas explosion protection	Ex II 2 G Ex db IIC T6 Gb
ATEX dust certificate	TÜV 18 ATEX 8218 X
ATEX dust explosion protection	Ex II 2 D Ex tb IIIC T80 °C Db
UKEX certification	TÜV 22 UKEX 7137 X
INMETRO certification	TÜV 23.0363X
MASC certification	MASC MS/18-3256X
IECEX Firedamp protection	Ex db I Mb
ATEX Firedamp protection	Ex I M2 Ex db I Mb

# Surveillance solutions and cameras

## Autofocus Zoom camera 2 MP PTZ dome



EC-962-1 T08-VA4.1K.PS1-L.H-005.N-P Art. No. 338352

### Explosion Protection

UKEX gas explosion protection	Ex II 2 G Ex db IIC T6 Gb
UKEX dust explosion protection	Ex II 2 D Ex tb IIIC T80 °C Db
UKEX Firedamp protection	Ex I M2 Ex db I Mb
INMETRO gas explosion protection	Ex db IIC T6 Gb
INMETRO dust explosion protection	Ex tb IIIC T80 °C Db
INMETRO Firedamp protection	Ex db I Mb
MASC gas explosion protection	Ex db IIC T6 Gb
MASC dust explosion protection	Ex tb IIIC T80 °C Db
MASC Firedamp protection	Ex db I Mb
EMC Directive	2014/30/EU
RoHS Directive	2011/65/EU
Low-voltage Directive	2014/35/EU

### Electrical Data

Power consumption	Typically 10.5 W, max. 19 W
Interfaces	PoE+ (IEEE802.3at)
Connection	Ethernet LAN 100Base-TX, RJ45

### Camera Data

Sensor	1/2.8" progressive CMOS
Day/night camera	Yes
Viewing angle	58.3°–2.4° H @ 16:9
Zoom	32x optical, 12x digital
Resolution	2 MP, 1920x1080 pixels
Number of preset positions	256
Min.light. B/W (ICR-ON)	0.01 lux (30 IRE, F1.4)
Minimum illumination color (ICR-OFF)	0.1 lx F1.4, 30 IRE
Horizontal speed (variable)	0,1°/s ... 350°/s
Vertical speed (variable)	0,1°/s ... 350°/s
Frame rate (fps)	60 fps
Compression	H.264, H.265, MJPEG
No. of privacy maskings	20
WDR (dynamic range)	120 dB
White balance	Yes
Wide Dynamik Range	Yes
Web server	Yes
Special feature	UV and scratch resistance, Lightfinder and Forensic WDR,
Analytics	AXIS Object Analysis, AXIS Scene Metadata, AXIS Video Motion Detection, AXIS Motion Guard, AXIS Fence Guard, AXIS Loitering Guard, Audio Detection, Advanced Gatekeeper, Autotracker 2
Events	Line crossing, object in area, counting of line crossings, dwell time in area, triggered objects with motion paths, colour-coded boundary frames and tables, polygon inclusion/exclusion areas, perspective configuration, ONVIF motion alarm event
Number of streams	Multiple streams

### Software

Network Configuration	IPv4/v6, HTTP, HTTPS, QoS DiffServ, FTP, SMTP, UPnP, SNMPv1/v2c/, v3(MIB-II), DNS, DynDNS, NTP, Bonjour,
Streaming	ONVIF Profile S, T, G, M

# Surveillance solutions and cameras

## Autofocus Zoom camera 2 MP PTZ dome



EC-962-1 T08-VA4.1K.PS1-L.H-005.N-P Art. No. 338352

### Ambient Conditions

Ambient temperature	-30 – 60 °C
---------------------	-------------

### Mechanical Data

Degree of protection (IP)	IP66, 68
Note on degree of protection	According to IEC/EN 60529
Enclosure material	Stainless steel 316L
Cable 1	Cat.6A (8.9 ± 0.3 mm)
Cable structure	4x2xAWG23/1
Cable length	5 m
Opening for cable gland	1x
Slewing range	360° endless
Tilt range	160°@58,3° Fo
Integrated wiper	No
Package weight	15.3 kg
Scope of delivery	incl. CAT.6 network cable

Dimensional Drawings (All Dimensions in mm [inches]) – Subject to Alterations

### Accessories

#### Wall mounting bracket

Art. No.



**WB-EC-962-WMB-TNXCD-VA4.x**  
 Wall mounting bracket for EC-962  
 Material: 316L stainless steel (1.4404)  
 Weight: 7.8 kg; Point load 50 kg  
 Mounting material and protective cover included

339159

#### Pole mount adapter

Art. No.

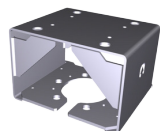


**PMA-EC-962-PMB-TNXCD/T08-VA4.x**  
 Pole mount adapter for EC-962  
 For mounting on poles with a diameter between 100 mm and 150 mm  
 Material: Stainless steel 316L (1.4404)  
 Weight: 6 kg; Point load 50 kg  
 Mounting material included in delivery

339160

#### Ceiling mount adapter

Art. No.



**CMA-EC-962-CMB-TNXCD/VA4.x**  
 Ceiling mount adapter for EC-962  
 For mounting on ceilings or horizontally on the pole mount adapter  
 Material: 316L stainless steel (1.4404)  
 Weight: 12 kg; load capacity: 50 kg  
 Mounting material included

339161

#### Ex e enclosure with Ethernet terminal

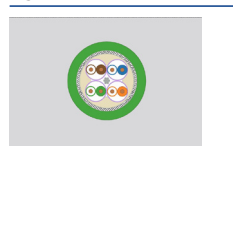
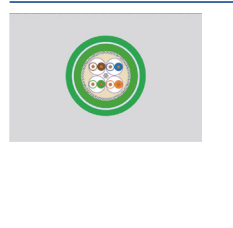
Art. No.



8146/5041+ 8187 (1 x Ethernet terminal)  
 Polyester resin, Glass fibre reinforced

257033

EC-962-1 T08-VA4.1K.PS1-L.H-005.N-P Art. No. 338352

System cable		Art. No.
	<b>VB-CAM-CAT6-SKD02-T Ex</b> System cable Special cable for hazardous areas CAT6A network cable Structure: 4 x 2 x AWG23/1 shielded Temperature range -60 °C to +80 °C Outer jacket material: PUR - flame retardant	339165
	<b>VB-CAM-CAT6-ARM-ASKD02-T Ex</b> Armoured system cable Special cable for hazardous areas CAT6A network cable Structure: 4 x 2 x AWG23/1 shielded Temperature range -60 °C to +80 °C Outer jacket material: PUR - flame retardant	339166

We reserve the right to make alterations to the technical data, dimensions, weights, designs and products available without notice. The illustrations cannot be considered binding.