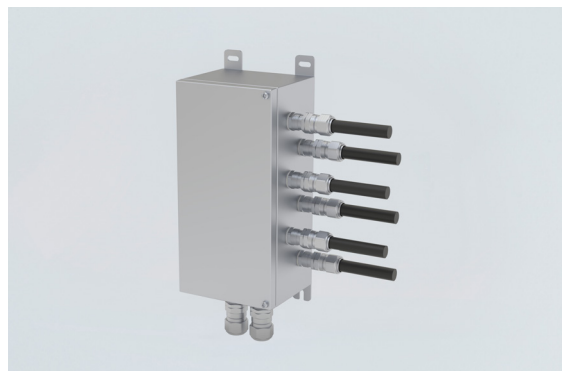


8151/1-071A-3321 Art. No. 346385



- Resistant Ex e terminal boxes made of stainless steel, degree of protection IP66, external M8 earth connection
- Version as screw- on cover or hinged cover with cam locks or hinge with screw- on cover
- Standard sizes are available

MY R. STAHL 8151B



The 8151 Series is made of high-quality 1.4404/316L stainless steel and features an enclosure with increased safety protection, specially designed for use as an Ex e terminal box. It is suitable for installation in zones 1, 2, 21, and 22, and is available in 14 different standard sizes. The enclosure can also be customised with terminal blocks from various manufacturers, along with a wide selection of cable glands, cable entries, and optional mounting and flange plates.

### Technical Data

#### Explosion Protection

Area of application	European Union (ATEX) IECEX United Kingdom
Application range (zones)	1, 2, 21, 22
IECEX gas certificate	IECEX BVS 24.0021X
IECEX gas explosion protection	Ex eb IIC T6 / T5 Gb
IECEX dust certificate	IECEX BVS 24.0021X
IECEX dust explosion protection	Ex tb IIIC T80 °C / T95 °C Db
ATEX gas certificate	BVS 24 ATEX E 025 X
ATEX gas explosion protection	⊕ II 2 G Ex eb IIC T6 / T5 Gb
ATEX dust certificate	BVS 24 ATEX E 025 X
ATEX dust explosion protection	⊕ II 2 D Ex tb IIIC T80 °C / T95 °C Db
Certificates	ATEX (BVS), IECEX (BVS), India (PESO), Taiwan (ITRI)

#### Electrical Data

Rated operational voltage AC	690 V
Rated operational voltage AC	0 ... 690 V

#### Ambient Conditions

Ambient temperature	-60 °C ... +40 °C (T6) -60 °C ... +55 °C (T5)
Ambient temperature °F	-76°F ... +104°F (T6) -76°F ... +131°F (T5)

#### Mechanical Data

Degree of protection IP (IEC 60529)	IP66
Enclosure material	Stainless steel 1.4404, (AISI 316L), brush finished
External protective conductor connection	M8
Silicone-free	No
Connection cross-section	2.5 mm <sup>2</sup>

8151/1-071A-3321 Art. No. 346385

### Mechanical Data

Connection cross-section AWG	14 AWG
Cover	Hinge / cam lock
Dimensions (WxHxD)	176.5 x 360 x 91 mm
Width	176.5 mm
Width, inches	6.945 in
Height	360 mm
Height in inches	14.173 in
Depth	91 mm
Depth in inches	3.583 in
Weight	-

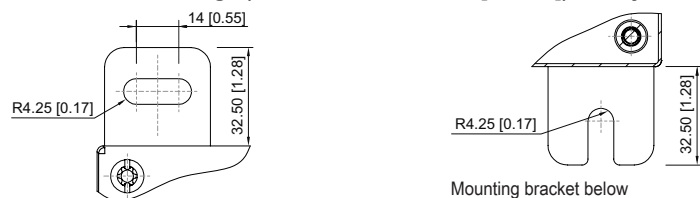
### Mounting / Installation

Tightening torque of cover screw 1	4.5 N · m
Tightening torque of cover screw 1 lbf in	39.83 lbf in

### Components

Flange and plates	Without flange
Entries installation options/side	Without drilled holes
Terminal rail	35 x 301 mm (1x)
Terminal rail	1.38 x 11.85" (1x)
Type of terminals 1	1 x Phoenix UT 2-conductor, 2.5 mm <sup>2</sup> , grey
Note	For customized terminal configurations, please contact your nearest sales office.

### Dimensional Drawings (All Dimensions in mm [inches]) – Subject to Alterations



Mounting bracket top

Mounting bracket below

We reserve the right to make alterations to the technical data, dimensions, weights, designs and products available without notice. The illustrations cannot be considered binding.